

Oyster HOME

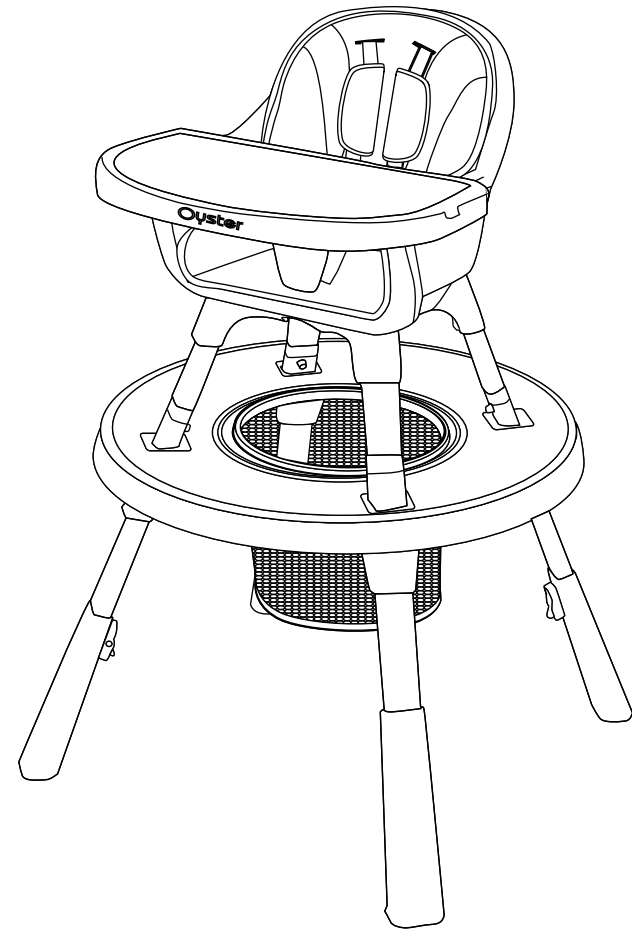
BabyStyle[®]

BabyStyle UK Ltd.
36 Charles Street, Sileby,
Leicestershire LE12 7RJ

United Kingdom

T: 01509 816444
E: info@babystyle.co.uk
babystyle.co.uk

©BabyStyle UK Ltd. AW122108062023



4-IN-1 HIGHCHAIR INSTRUCTION MANUAL

IMPORTANT! READ CAREFULLY AND KEEP FOR FUTURE REFERENCE.

- Your child's safety may be affected if you do not follow these instructions.
- The highchair must be assembled, adjusted and disassembled only by an adult.
- Use only spare parts delivered by manufacturer for replacing parts or repairs.
- Damage caused by overloading or incorrect use or neglect are not covered by the warranty.
- Prolonged exposure to sunshine may cause changes in the colour of materials and fabrics.
- Do not expose this product to extreme temperatures. Extreme sunshine or temperatures may cause colour changes or bent parts.

WARNING:

- Do not use this product without reading the instructions first.
- For children aged between 6 and 36 months, up to a maximum of 15kg.
- Do not use the product before your child can sit up unaided.
- Never leave the child unattended.
- Be aware of the risk of tilting when your child can push its feet against a table or other structure.
- Always use the restraint system when using the chair in highchair mode.
- Always use the crotch belt when using the chair in highchair mode, to prevent them from sliding out. Make sure the harness is properly adjusted.
- Remove restraint system when using the chair as a low chair/play chair.
- Never use the product on an elevated surface e.g. table, counter, near steps or on other elevated surface.
- Always use the product on the floor.
- Falling hazard - prevent your child from climbing on the product
- Be aware of the risk of open fire and other sources of strong heat, such as electric bar fires, gas fires etc. in the near vicinity of the product.
- All assembly fittings should be tightened properly, care should be taken that no screws or parts are loose.
- Young children should not be allowed to play unsupervised in the vicinity of this product.
- Do not use the product unless all components are correctly fitted and adjusted.

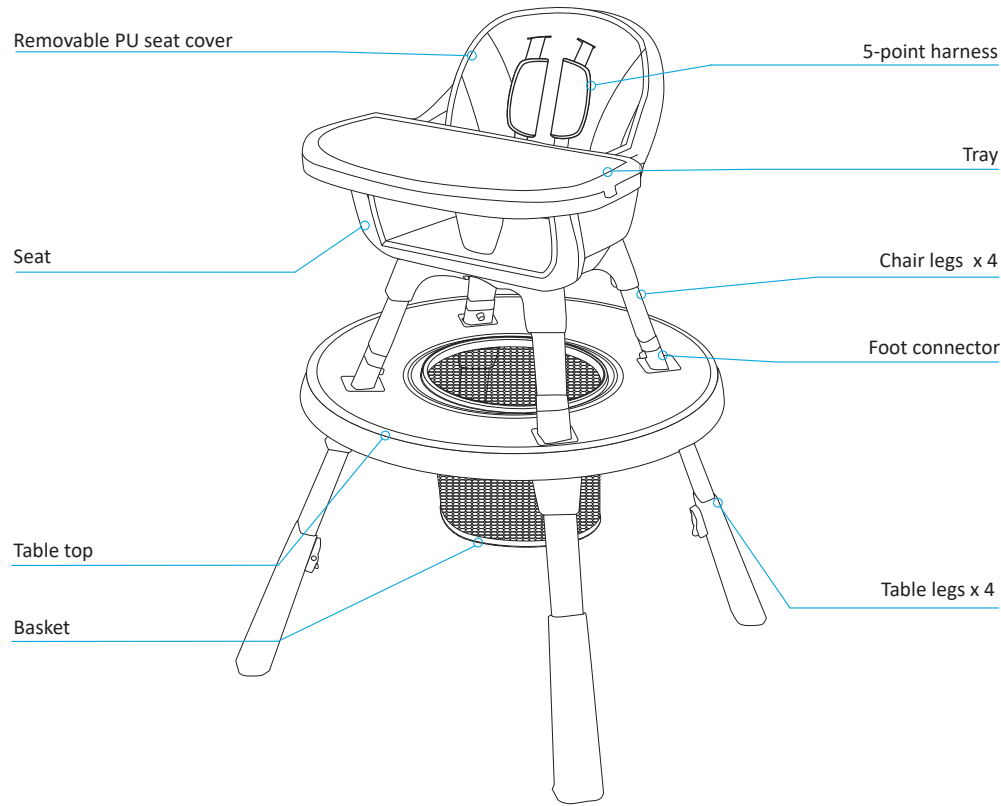
IMPORTANT:

- Adult assembly required.
- Care should be taken in unpacking and assembly.
- Examine highchair frequently for damage, missing or loose parts.
- Do not use if any parts are missing or damaged.
- If parts are missing or broken, please contact the store where you bought the product, before using.
- Note: The fabric patterns, images and accessories on this product in this instruction manual may vary from the product you have purchased.

WARNING:

Please keep all packaging material away from baby's and children, to prevent suffocation.

HIGHCHAIR INFORMATION



Please check if all of the below elements are present in the box.
If any elements are missing, please contact the retailer you purchased from.

1. Seat with PU cover and restraint system x 1
2. Tray and upper cleaning tray x 1
3. Seat legs x 4
4. Table x 1
5. Table legs x 4
6. Play center seat with cover x 1
7. Table top with building block reverse x 1
8. Basket x 1
9. Table caps x 4
10. Table cap remover tool x 1

ASSEMBLY

CHAIR LEG ASSEMBLY

Insert the leg (1) into the base holder (2). Please note that each of the four legs has a spring-loaded pin. Line up the seat base, so that the small hole on the base holder lines up with the pin. Push firmly on the upper leg at either end until each of the spring-loaded pins clicks into place within the small hole in the base holder. Repeat for the other three legs (3).

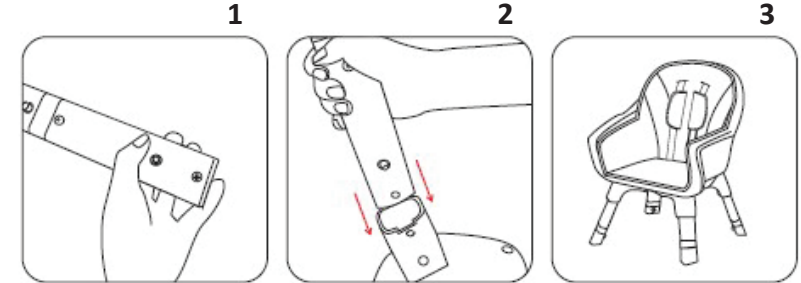
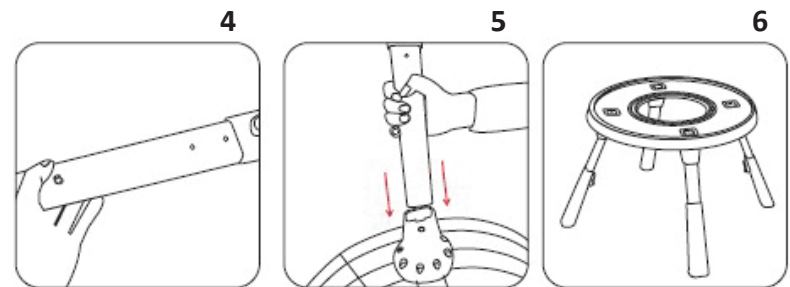


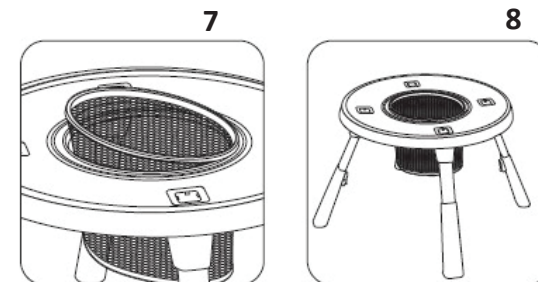
TABLE LEG ASSEMBLY

Insert the lower part of the table leg (4) into the table top (5). Remember each of the four legs has a spring pin, so position the leg so the pin fits into bottom of the table top. Press down firmly on both sides of the upper leg until each spring pin clicks into place. Repeat for the other three legs (6).



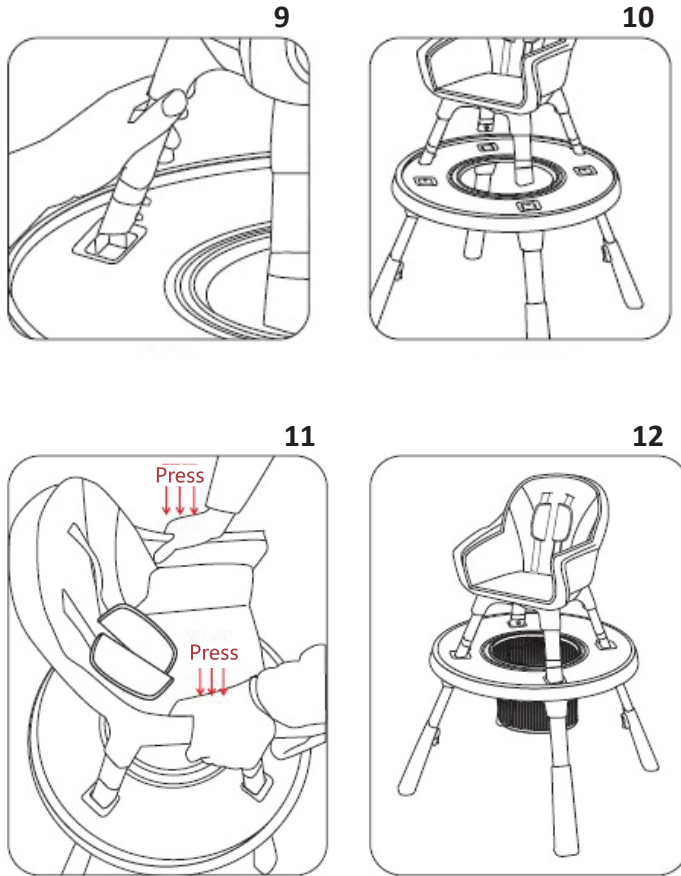
BASKET ASSEMBLY

Proceed as shown in the picture (7), insert the basket into the hole in the table (8).



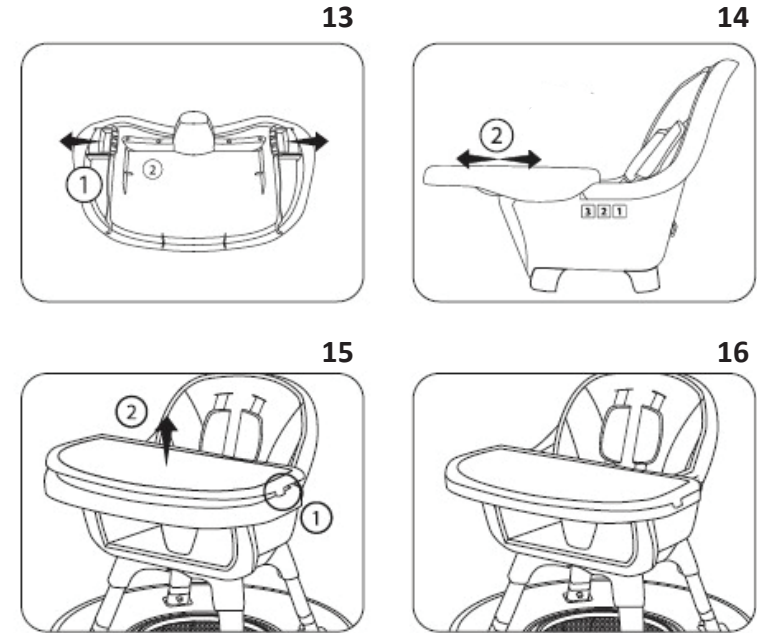
HIGHCHAIR ASSEMBLY

To use the product as a highchair, connect the seat and table (9) together. Lift the seat up and insert the seat legs into the plugs on the table top (10). The seat will fit in two positions, if the legs don't align first time, rotate the seat 90 degrees (11) until the seat legs are flush with the legs of the table (12).



TRAY ASSEMBLY

To mount the tray, slide both latches on the bottom of the tray (13) and slide the tray in according to the channels on the sides of the armrests (14) until you hear a "click". Note: the tray is a double (15) and the upper cleaning tray (16) can be removed.

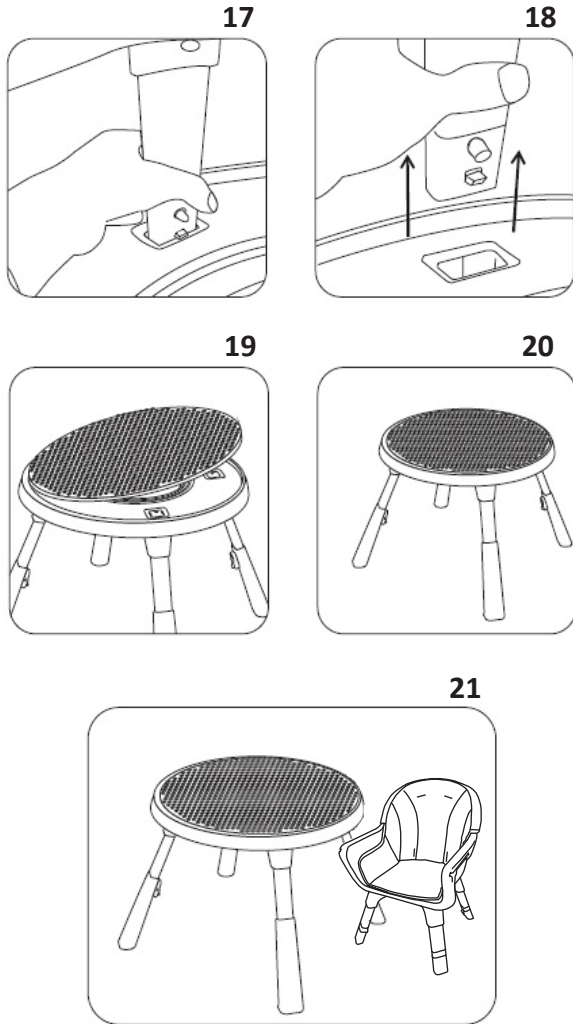


WARNING:

after fitting the chair into the tabletop sockets, ensure the chair is locked into position.

TABLE ASSEMBLY

To use the product as a table, separate the seat from the table. Press the pegs on the legs of the upper part of the seat (17) and then remove the chair from the table (18). Install the table top cover on one side first (19) and then the other side (20). The table and chair are ready for use (21).



CONVERT TO PLAY CENTRE

The table can be turned into a 360 play centre. To do this, remove the overlay on the table top, or the seat. 1, Check the wheels (22) are on the underside of the liner, then insert the liner into the hole in the table so that the 4 tabs click into place (23).

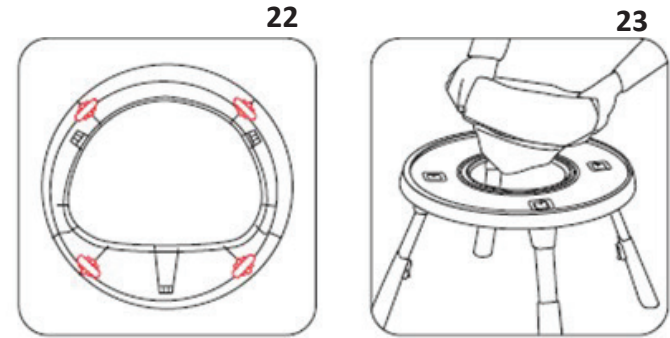


TABLE CAPS

When in play centre mode, you can cover the chair leg plugs with the included table caps. To remove the table caps please use the included tool as demonstrated below and store in a safe place for later use.



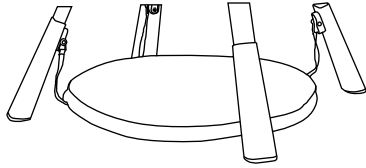
WARNING:

Remove cover and restraint system when using the chair on the floor.

OPTIONAL EXTRA ACCESSORIES

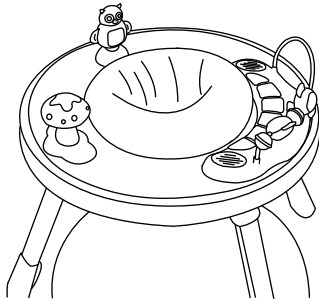
Play centre foot pad:

- For use in Play Centre mode with 360 seat. Ensure all straps are attached to the legs of the table at all times.
- Adjust the straps so they are the correct height for your child.
- Always supervise your child if they are sitting, playing or laying on the footpad when used away from the activity centre.



Activity toy set:

- For use in Play Centre mode with 360 seat. Insert the toys into the chair leg plugs. To remove each toy press the release button and pull up at the same time.

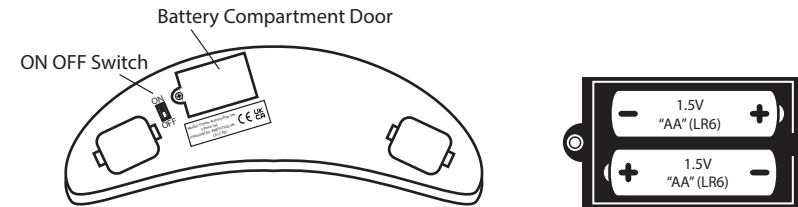


ACTIVITY TOY SET CARE & MAINTENANCE

- Requires two "AA" alkaline batteries (not included).
- Adult assembly is required for battery installation.
- Tool required for battery installation: Philips screwdriver (not included).
- Wipe this toy with a clean cloth dampened with a mild soap and water solution.
- **IMPORTANT!** An adult should convert the Table to Play Centre and Play Centre to Table.
- **IMPORTANT!** Toys should be assembled by an adult only.

BATTERY INSTALLATION:

- Locate the battery compartment door on the bottom of the toy tray.
- Loosen the screw in the battery compartment door with a Philips screwdriver.
- Remove the battery compartment door.
- Insert two "AA" alkaline batteries, as indicated inside the battery compartment.
- Batteries are to be inserted with the correct polarity (+ and -).
- Hint: We recommend using alkaline batteries for longer life.
- Replace the battery compartment door and tighten the screw with a Philips screwdriver. Do not over tighten.
- When sounds from this toy become faint or stop, its time for an adult to change the batteries!



BATTERY SAFETY INFORMATION

- In exceptional circumstances batteries may leak fluids that can cause a chemical burn injury or ruin your product.
- To avoid battery leakages:
- Do not mix old and new batteries or batteries of different types:
- alkaline, standard (carbon-zinc) or rechargeable (nickel-cadmium).
- Insert batteries as indicated inside the battery compartment.
- Batteries are to be inserted with the correct polarity (+ and -).
- Remove batteries during long periods of non-use. Always remove exhausted batteries from the product. Dispose of batteries safely. Do not dispose of product in a fire. The batteries inside may explode or leak.
- Never short-circuit the battery terminals.
- Use only batteries of the same or equivalent type, as recommended.
- Do not charge non-rechargeable batteries.
- Remove rechargeable batteries from the product before charging.
- If removable, rechargeable batteries are used, they are only to be charged under adult supervision.

Play Chair:

- For use on the ground as an additional chair with the table.

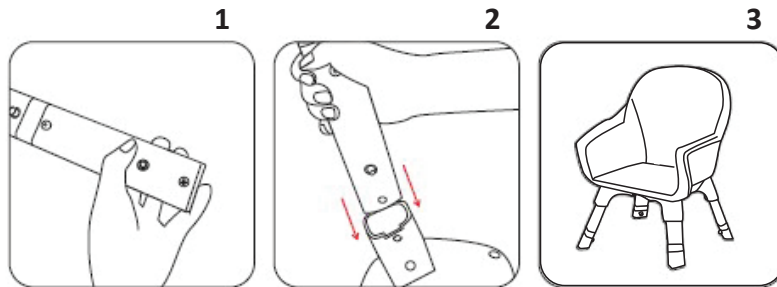


WARNING:

- Do not use a restraint system when in single playchair mode.
- Never use the additional play chair as the highchair seat without the restraint system.
- Only use firm ground, which is horizontal, level and dry.
- Do not place the play centre close to anything that may provide an additional foothold or present a danger of suffocation or strangulation, e.g. strings, blind/curtain cords etc.

CHAIR LEG ASSEMBLY

Insert the leg (1) into the base holder (2). Please note that each of the four legs has a spring-loaded pin. Line up the seat base, so that the small hole on the base holder lines up with the pin. Push firmly on the upper leg at either end until each of the spring-loaded pins clicks into place within the small hole in the base holder. Repeat for the other three legs (3).



CARE & MAINTENANCE

Clean fabrics with a damp cloth and mild detergent, and dry thoroughly. Clean base and seat frame with a damp cloth and mild detergent, and dry thoroughly.

To prolong the life of your nursery product, keep it clean and do not leave in the direct sunlight for extended periods of time.

Do not use abrasive cleaners. Do not soak in water.

Always store your product in a clean dry place.

Do not leave in the boot of car.

Avoid exposure to salt water, as this may encourage the formation of rust. If product is used in this environment completely clean your product afterward to remove sand and salt from mechanisms.

Should parts become stiff, squeak or difficult to operate ensure dirt is not the cause.

When storing product, never stack other items on top of it, this may damage the highchair.

Product intended for indoor use only.

Do not dry clean or use bleach.

In some climates the parts may be affected by mould and mildew. To help prevent this occurring, do not fold or store the product if it is damp or wet.

Always store the product in a well ventilated area.

Always check parts regularly for tightness of screws, nuts and other fasteners, tighten if required. To maintain the safety of your nursery product, seek prompt repairs for bent, torn, worn or broken parts.

Use only parts and accessories approved by the supplier.

WARRANTY POLICY

KEEP YOUR ORIGINAL RECEIPT OF PURCHASE SAFE WITH YOUR WARRANTY INFORMATION

It will be required should you unfortunately find a defect. The receipt must show the date of purchase clearly. In the first instance you must contact the original place of purchase. Exchanging or returning the product cannot be requested. Repairs to any part of this product do not extend the warranty period. Do not return your product direct to the manufacturer.

DISCLAIMER

Whilst we believe the information set out in this instruction manual to be correct and reliable at the time of print, we do not accept responsibility for its accuracy and we shall not be liable for its interpretation and its use. We reserve the right to change, modify, add or delete product specifications at any time without prior notice.

YOUR WARRANTY POLICY

At BabyStyle, we guarantee your product has been manufactured in accordance with all current European safety standards which are applicable to this product, and that this product is free from any defects in workmanship and material at the time of purchase. During the production process this product has gone through rigorous quality checks. Despite our efforts, if this product does show a manufacturing or material defect within the 24 months warranty period for the frame and 6 months for the fabrics we will comply to the warranty terms and conditions providing the product has been used for normal use as described within the instruction manual and it has been maintained correctly as described in the instruction manual, for further information please contact the place of purchase. Please retain your original receipt of purchase safely.

WARRANTY TERMS

- Highchair: 24 consecutive months.
- Fabrics: 6 consecutive months.
- The warranty only applies to the original purchaser and is non-transferable.

The warranty will be invalidated in the following circumstances:

- The product has not been used for its purpose other than described within the instruction manual.
- If the product is returned for repair through a dealer not authorised by us.
- If the original receipt of purchase cannot be provided.
- If the defect is as a result of improper use or incorrect maintenance, negligence or impact damage.
- If the parts show normal wear and tear that may be expected from daily use of the product.
- The warranty of this product becomes valid from the date of purchase as stated on the original receipt of purchase. This does not affect your statutory rights.

Register your product today at babystyledirect.co.uk.

We are proudly part of the



b-p-a.org