

**Test Report**

No.: T52110270182TC

Date: JUN 22, 2021

Page 1 of 83

Tiny Love Test Report

Applicant:	TINY LOVE LTD
Address:	KORENDIJK 5, NL-5704 RD, HELMOND
Contact Person:	SMADAR CAHLON, YARDEN LEBEL, ASTIN LEE, BRAIN CHENG

Sample Description:	TREASURE THE OCEAN 3-IN-1 MOBILE GYMINI		
Style/Item No.:	120700E001, 120770E001	PO No.:	/
Country of Destination:	/	Country of Origin:	CHINA
Vendor:	WINFIELD		
Manufacturer:	/		
Date Code:	/		
Intended Age Grade on Label:	0-36M		

Age Group Applied in Testing:	/		
Date In:	JUN 02, 2021		
Date Out:	JUN 22, 2021		
Working Days:	7+		
Further Information Date:		Sample Resubmission Date:	Jun 11, 2021



SGS-CSTC (China) Technical Services Co., Ltd.
Shenzhen Branch Testing Center Hardlines

Unless otherwise agreed in writing, this document is issued by the Company subject to its General Conditions of Service printed overleaf, available on request or accessible at <http://www.sgs.com/en/Terms-and-Conditions.aspx> and, for electronic format documents, subject to Terms and Conditions for Electronic Documents at <http://www.sgs.com/en/Terms-and-Conditions/Terms-e-Documents.aspx>. Attention is drawn to the limitation of liability, indemnification and jurisdiction issues defined therein. Any holder of this document is advised that information contained hereon reflects the Company's findings at the time of its intervention only and within the limits of Client's instructions, if any. The Company's sole responsibility is to its Client and this document does not exonerate parties to a transaction from exercising all their rights and obligations under the transaction documents. This document cannot be reproduced except in full, without prior written approval of the Company. Any unauthorized alteration, forgery or falsification of the content or appearance of this document is unlawful and offenders may be prosecuted to the fullest extent of the law. Unless otherwise stated the results shown in this test report refer only to the sample(s) tested and such sample(s) are retained for 30 days only.

Attention: To check the authenticity of testing / inspection report & certificate, please contact us at telephone: (86-755) 8307 1443, or email: CN.Doccheck@sgs.com

SGS Bldg, No.4, Jianghao Industrial Park, No.430, Jihua Road, Bantian, Longgang District, Shenzhen, China 518129 t (86-755) 25328888 f (86-755) 83106190 www.sgs.com.cn
中国·深圳·龙岗区坂田吉华路 430 号江源工业园 4 栋 SGS 大楼 邮编: 518129 t (86-755) 25328888 f (86-755) 83106190 e sgs.china@sgs.com

Member of the SGS Group (SGS SA)



Test Report

No.: T52110270182TC

Date: JUN 22, 2021

Page 2 of 83

Test Requested		Conclusion
1.	European RoHS Directive 2015/863/EU amending Annex II to Directive 2011/65/EU – Certain hazardous substances	--
	Lead, Mercury, Cadmium, Hexavalent chromium, Polybrominated biphenyls (PBB), Polybrominated diphenyl ethers (PBDE) Content Screening by X-ray fluorescence spectrometry and analysis by wet chemical	PASS
	Phthalate Content	PASS

***** FOR FURTHER DETAILS, PLEASE REFER TO THE FOLLOWING PAGE(S) *****



SGS-CSTC (Shenzhen) Technical Services Co., Ltd.
Shenzhen Branch Testing Center Hardlines

Unless otherwise agreed in writing, this document is issued by the Company subject to its General Conditions of Service printed overleaf, available on request or accessible at <http://www.sgs.com/en/Terms-and-Conditions.aspx> and, for electronic format documents, subject to Terms and Conditions for Electronic Documents at <http://www.sgs.com/en/Terms-and-Conditions/Terms-e-Documents.aspx>. Attention is drawn to the limitation of liability, indemnification and jurisdiction issues defined therein. Any holder of this document is advised that information contained hereon reflects the Company's findings at the time of its intervention only and within the limits of Client's instructions, if any. The Company's sole responsibility is to its Client and this document does not exonerate parties to a transaction from exercising all their rights and obligations under the transaction documents. This document cannot be reproduced except in full, without prior written approval of the Company. Any unauthorized alteration, forgery or falsification of the content or appearance of this document is unlawful and offenders may be prosecuted to the fullest extent of the law. Unless otherwise stated the results shown in this test report refer only to the sample(s) tested and such sample(s) are retained for 30 days only.

Attention: To check the authenticity of testing / inspection report & certificate, please contact us at telephone: (86-755) 8307 1443, or email: CN.Doccheck@sgs.com

SGS Bldg, No.4, Jianghao Industrial Park, No.430, Jihua Road, Bantian, Longgang District, Shenzhen, China 518129 t (86-755) 25328888 f (86-755) 83106190 www.sgs.com
中国·深圳·龙岗区坂田吉华路 430 号江源工业园 4 栋 SGS 大楼 邮编: 518129 t (86-755) 25328888 f (86-755) 83106190 sgs.china@sgs.com

Member of the SGS Group (SGS SA)

Picture Page



Signed for and on behalf of
SGS-CSTC Standards Technical
Services Co., Ltd. Shenzhen Branch Testing Center

Qu Ping, Kiky
Dept. Manager

scan to see the report



T52110270182TC



SGS-CSTC Standards Technical Services Co., Ltd.
Shenzhen Branch Testing Center Hardlines

Unless otherwise agreed in writing, this document is issued by the Company subject to its General Conditions of Service printed overleaf, available on request or accessible at <http://www.sgs.com/en/Terms-and-Conditions.aspx> and, for electronic format documents, subject to Terms and Conditions for Electronic Documents at <http://www.sgs.com/en/Terms-and-Conditions/Terms-e-Document.aspx>. Attention is drawn to the limitation of liability, indemnification and jurisdiction issues defined therein. Any holder of this document is advised that information contained hereon reflects the Company's findings at the time of its intervention only and within the limits of Client's instructions, if any. The Company's sole responsibility is to its Client and this document does not exonerate parties to a transaction from exercising all their rights and obligations under the transaction documents. This document cannot be reproduced except in full, without prior written approval of the Company. Any unauthorized alteration, forgery or falsification of the content or appearance of this document is unlawful and offenders may be prosecuted to the fullest extent of the law. Unless otherwise stated the results shown in this test report refer only to the sample(s) tested and such sample(s) are retained for 30 days only.

Attention: To check the authenticity of testing / inspection report & certificate, please contact us at telephone: (86-755) 8307 1443, or email: CN.Doccheck@sgs.com

SGS Bldg, No.4, Jianghao Industrial Park, No.430, Jihua Road, Bantian, Longgang District, Shenzhen, China 518129 t (86-755) 25328888 f (86-755) 83106190 www.sgsgroup.com.cn
中国·深圳·龙岗区坂田吉华路 430 号江源工业园 4 栋 SGS 大楼 邮编: 518129 t (86-755) 25328888 f (86-755) 83106190 e sgs.china@sgs.com

Results:
1. European RoHS Directive 2015/863/EU amending Annex II to Directive 2011/65/EU – Certain hazardous substances

- Verification Method:
1. With reference to IEC 62321-2:2013, review was performed for the samples disjointed from the submitted articles.
 2. With reference to IEC 62321-1:2013, tests were performed for the samples indicated by the photos in this report
 - (1) With reference to IEC 62321-3-1:2013, screening by EDXRF spectroscopy
 - (2) Wet chemical test method
 - a. With reference to IEC 62321-5:2013, determination of Cadmium by ICP-OES
 - b. With reference to IEC 62321-5:2013, determination of Lead by ICP-OES
 - c. With reference to IEC 62321-4:2013+AMD1:2017, determination of Mercury by ICP-OES
 - d. With reference to IEC 62321-7-1:2015, IEC 62321-7-2:2017 & ISO 17075-1:2017, determination of Hexavalent chromium by Colorimetric method using UV-Vis.
 - e. With reference to IEC 62321-6:2015, determination of PBBs and PBDEs by GC-MS
 3. With reference to IEC 62321-8:2017, determination of phthalates by GC-MS.



SGS-CSTC (China) Technical Services Co., Ltd.
Shenzhen Branch Testing Center Hardlines

Unless otherwise agreed in writing, this document is issued by the Company subject to its General Conditions of Service printed overleaf, available on request or accessible at <http://www.sgs.com/en/Terms-and-Conditions.aspx> and, for electronic format documents, subject to Terms and Conditions for Electronic Documents at <http://www.sgs.com/en/Terms-and-Conditions/Terms-e-Documents.aspx>. Attention is drawn to the limitation of liability, indemnification and jurisdiction issues defined therein. Any holder of this document is advised that information contained hereon reflects the Company's findings at the time of its intervention only and within the limits of Client's instructions, if any. The Company's sole responsibility is to its Client and this document does not exonerate parties to a transaction from exercising all their rights and obligations under the transaction documents. This document cannot be reproduced except in full, without prior written approval of the Company. Any unauthorized alteration, forgery or falsification of the content or appearance of this document is unlawful and offenders may be prosecuted to the fullest extent of the law. Unless otherwise stated the results shown in this test report refer only to the sample(s) tested and such sample(s) are retained for 30 days only.

Attention: To check the authenticity of testing / inspection report & certificate, please contact us at telephone: (86-755) 8307 1443, or email: CN.Doccheck@sgs.com

SGS Bldg, No.4, Jianghao Industrial Park, No.430, Jihua Road, Bantian, Longgang District, Shenzhen, China 518129 t (86-755) 25328888 f (86-755) 83106190 www.sgs.com
中国·深圳·龙岗区坂田吉华路 430 号江源工业园 4 栋 SGS 大楼 邮编: 518129 t (86-755) 25328888 f (86-755) 83106190 sgs.china@sgs.com

Member of the SGS Group (SGS SA)

Test Report

No.: T52110270182TC

Date: JUN 22, 2021

Page 5 of 83

In accordance with the result of material risk assessment, the following disjointed parts in the submitted sample have been verified.

Details on Verification

Part No	Part Description	Restricted Substances	Results of EDXRF(1)	Screening Result of PHTH(2)	Result of Wet Chemical Testing(3) (mg/kg)	Conclusion on EU RoHS	Resubmitted Date
001	White non-woven w/ black printing (Bag)	Pb Cd Hg Cr(VI)▼ PBBs PBDEs DBP BBP DEHP DIBP	BL BL BL BL BL BL --- BL --- BL ---	--- --- --- --- --- --- BL BL BL BL	--- --- --- --- --- --- --- --- --- ---	Comply Comply Comply Comply Comply Comply Comply Comply Comply Comply	
002	White cloth w/ grey printing (Rim of mat)	Pb Cd Hg Cr(VI)▼ PBBs PBDEs DBP BBP DEHP DIBP	BL BL BL BL BL BL --- BL --- BL ---	--- --- --- --- --- --- BL BL BL BL	--- --- --- --- --- --- --- --- --- ---	Comply Comply Comply Comply Comply Comply Comply Comply Comply Comply	
003	White cloth w/ dark green printing (Outermost ring on mat)	Pb Cd Hg Cr(VI)▼ PBBs PBDEs DBP BBP DEHP DIBP	BL BL BL BL BL BL --- BL --- BL ---	--- --- --- --- --- --- BL BL BL BL	--- --- --- --- --- --- --- --- --- ---	Comply Comply Comply Comply Comply Comply Comply Comply Comply Comply	



SGS-CSTC (Shenzhen) Technical Services Co., Ltd.
Shenzhen Branch Testing Center Hardlines

Unless otherwise agreed in writing, this document is issued by the Company subject to its General Conditions of Service printed overleaf, available on request or accessible at <http://www.sgs.com/en/Terms-and-Conditions.aspx> and, for electronic format documents, subject to Terms and Conditions for Electronic Documents at <http://www.sgs.com/en/Terms-and-Conditions/Terms-e-Document.aspx>. Attention is drawn to the limitation of liability, indemnification and jurisdiction issues defined therein. Any holder of this document is advised that information contained hereon reflects the Company's findings at the time of its intervention only and within the limits of Client's instructions, if any. The Company's sole responsibility is to its Client and this document does not exonerate parties to a transaction from exercising all their rights and obligations under the transaction documents. This document cannot be reproduced except in full, without prior written approval of the Company. Any unauthorized alteration, forgery or falsification of the content or appearance of this document is unlawful and offenders may be prosecuted to the fullest extent of the law. Unless otherwise stated the results shown in this test report refer only to the sample(s) tested and such sample(s) are retained for 30 days only.

Attention: To check the authenticity of testing / inspection report & certificate, please contact us at telephone:(86-755) 8307 1443, or email: CN.Doccheck@sgs.com

SGS Bldg, No.4, Jianghao Industrial Park, No.430, Jihua Road, Bantian, Longgang District, Shenzhen, China 518129 t (86-755) 25328888 f (86-755) 83106190 www.sgs.com.cn
中国·深圳·龙岗区坂田吉华路 430 号江源工业园 4 栋 SGS 大楼 邮编: 518129 t (86-755) 25328888 f (86-755) 83106190 e sgs.china@sgs.com

Member of the SGS Group (SGS SA)

Test Report

No.: T52110270182TC

Date: JUN 22, 2021

Page 6 of 83

Part No	Part Description	Restricted Substances	Results of EDXRF(1)	Screening Result of PHTH(2)	Result of Wet Chemical Testing(3) (mg/kg)	Conclusion on EU RoHS	Resubmitted Date
004	White cloth w/ green printing (2nd ring on mat)	Pb Cd Hg Cr(VI)▼ PBBs PBDEs DBP BBP DEHP DIBP	BL BL BL BL BL BL --- BL --- BL ---	--- --- --- --- --- --- BL BL BL BL	--- --- --- --- --- --- --- --- --- ---	Comply Comply Comply Comply Comply Comply Comply Comply Comply Comply	
005	White cloth w/ light green printing (3rd ring on mat)	Pb Cd Hg Cr(VI)▼ PBBs PBDEs DBP BBP DEHP DIBP	BL BL BL BL BL BL --- BL --- BL ---	--- --- --- --- --- --- BL BL BL BL	--- --- --- --- --- --- --- --- --- ---	Comply Comply Comply Comply Comply Comply Comply Comply Comply Comply	
006	White cloth w/ light green printing (4th ring on mat)	Pb Cd Hg Cr(VI)▼ PBBs PBDEs DBP BBP DEHP DIBP	BL BL BL BL BL BL --- BL --- BL ---	--- --- --- --- --- --- BL BL BL BL	--- --- --- --- --- --- --- --- --- ---	Comply Comply Comply Comply Comply Comply Comply Comply Comply Comply	



SGS-CSTC 检验检测专用章
Inspection & Testing Services
Shenzhen Branch Testing Center Hardlines

Unless otherwise agreed in writing, this document is issued by the Company subject to its General Conditions of Service printed overleaf, available on request or accessible at <http://www.sgs.com/en/Terms-and-Conditions.aspx> and, for electronic format documents, subject to Terms and Conditions for Electronic Documents at <http://www.sgs.com/en/Terms-and-Conditions/Terms-e-Document.aspx>. Attention is drawn to the limitation of liability, indemnification and jurisdiction issues defined therein. Any holder of this document is advised that information contained hereon reflects the Company's findings at the time of its intervention only and within the limits of Client's instructions, if any. The Company's sole responsibility is to its Client and this document does not exonerate parties to a transaction from exercising all their rights and obligations under the transaction documents. This document cannot be reproduced except in full, without prior written approval of the Company. Any unauthorized alteration, forgery or falsification of the content or appearance of this document is unlawful and offenders may be prosecuted to the fullest extent of the law. Unless otherwise stated the results shown in this test report refer only to the sample(s) tested and such sample(s) are retained for 30 days only.

Attention: To check the authenticity of testing / inspection report & certificate, please contact us at telephone: (86-755) 8307 1443, or email: CN.Doccheck@sgs.com

SGS Bldg, No.4, Jianghao Industrial Park, No.430, Jihua Road, Bantian, Longgang District, Shenzhen, China 518129 t (86-755) 25328888 f (86-755) 83106190 www.sgs.com.cn
中国·深圳·龙岗区坂田吉华路 430 号江源工业园 4 栋 SGS 大楼 邮编: 518129 t (86-755) 25328888 f (86-755) 83106190 e sgs.china@sgs.com

Member of the SGS Group (SGS SA)

Test Report

No.: T52110270182TC

Date: JUN 22, 2021

Page 7 of 83

Part No	Part Description	Restricted Substances	Results of EDXRF(1)	Screening Result of PHTH(2)	Result of Wet Chemical Testing(3) (mg/kg)	Conclusion on EU RoHS	Resubmitted Date
007	White cloth w/ pale green printing (Middle of mat)	Pb Cd Hg Cr(VI)▼ PBBs PBDEs DBP BBP DEHP DIBP	BL BL BL BL BL BL --- BL --- BL ---	--- --- --- --- --- --- BL BL BL BL	--- --- --- --- --- --- --- --- --- ---	Comply Comply Comply Comply Comply Comply Comply Comply Comply Comply	
008	White cloth w/ multicolor printing (Jelly fish on mat)	Pb Cd Hg Cr(VI)▼ PBBs PBDEs DBP BBP DEHP DIBP	BL BL BL BL BL BL --- BL --- BL ---	--- --- --- --- --- --- BL BL BL BL	--- --- --- --- --- --- --- --- --- ---	Comply Comply Comply Comply Comply Comply Comply Comply Comply Comply	
009	White cloth w/ multicolor printing (Manta Ray on mat)	Pb Cd Hg Cr(VI)▼ PBBs PBDEs DBP BBP DEHP DIBP	BL BL BL BL BL BL --- BL --- BL ---	--- --- --- --- --- --- BL BL BL BL	--- --- --- --- --- --- --- --- --- ---	Comply Comply Comply Comply Comply Comply Comply Comply Comply Comply	



SGS-CSTC (Shenzhen) Technical Services Co., Ltd.
Shenzhen Branch Testing Center Hardlines

Unless otherwise agreed in writing, this document is issued by the Company subject to its General Conditions of Service printed overleaf, available on request or accessible at <http://www.sgs.com/en/Terms-and-Conditions.aspx> and, for electronic format documents, subject to Terms and Conditions for Electronic Documents at <http://www.sgs.com/en/Terms-and-Conditions/Terms-e-Documents.aspx>. Attention is drawn to the limitation of liability, indemnification and jurisdiction issues defined therein. Any holder of this document is advised that information contained hereon reflects the Company's findings at the time of its intervention only and within the limits of Client's instructions, if any. The Company's sole responsibility is to its Client and this document does not exonerate parties to a transaction from exercising all their rights and obligations under the transaction documents. This document cannot be reproduced except in full, without prior written approval of the Company. Any unauthorized alteration, forgery or falsification of the content or appearance of this document is unlawful and offenders may be prosecuted to the fullest extent of the law. Unless otherwise stated the results shown in this test report refer only to the sample(s) tested and such sample(s) are retained for 30 days only.

Attention: To check the authenticity of testing / inspection report & certificate, please contact us at telephone: (86-755) 8307 1443, or email: CN.Doccheck@sgs.com

SGS Bldg, No.4, Jianghao Industrial Park, No.430, Jihua Road, Bantian, Longgang District, Shenzhen, China 518129 t (86-755) 25328888 f (86-755) 83106190 www.sgs.com.cn
中国·深圳·龙岗区坂田吉华路 430 号江源工业园 4 栋 SGS 大楼 邮编: 518129 t (86-755) 25328888 f (86-755) 83106190 e sgs.china@sgs.com

Member of the SGS Group (SGS SA)

Test Report

No.: T52110270182TC

Date: JUN 22, 2021

Page 8 of 83

Part No	Part Description	Restricted Substances	Results of EDXRF(1)	Screening Result of PHTH(2)	Result of Wet Chemical Testing(3) (mg/kg)	Conclusion on EU RoHS	Resubmitted Date
010	White cloth w/ multicolor printing (Sea horse on mat)	Pb Cd Hg Cr(VI)▼ PBBs PBDEs DBP BBP DEHP DIBP	BL BL BL BL BL BL --- --- --- ---	--- --- --- --- --- --- BL BL BL BL	--- --- --- --- --- --- --- --- --- ---	Comply Comply Comply Comply Comply Comply Comply Comply Comply Comply	
011	White cloth w/ multicolor printing (Turtle on mat)	Pb Cd Hg Cr(VI)▼ PBBs PBDEs DBP BBP DEHP DIBP	BL BL BL BL BL BL --- --- --- ---	--- --- --- --- --- --- BL BL BL BL	--- --- --- --- --- --- --- --- --- ---	Comply Comply Comply Comply Comply Comply Comply Comply Comply Comply	
012	White cloth w/ multicolor printing (Purple fish on mat)	Pb Cd Hg Cr(VI)▼ PBBs PBDEs DBP BBP DEHP DIBP	BL BL BL BL BL BL --- --- --- ---	--- --- --- --- --- --- BL BL BL BL	--- --- --- --- --- --- --- --- --- ---	Comply Comply Comply Comply Comply Comply Comply Comply Comply Comply	



SGS-CSTC (Shenzhen) Co., Ltd.
Shenzhen Branch Testing Center Hardlines

Unless otherwise agreed in writing, this document is issued by the Company subject to its General Conditions of Service printed overleaf, available on request or accessible at <http://www.sgs.com/en/Terms-and-Conditions.aspx> and, for electronic format documents, subject to Terms and Conditions for Electronic Documents at <http://www.sgs.com/en/Terms-and-Conditions/Terms-e-Documents.aspx>. Attention is drawn to the limitation of liability, indemnification and jurisdiction issues defined therein. Any holder of this document is advised that information contained hereon reflects the Company's findings at the time of its intervention only and within the limits of Client's instructions, if any. The Company's sole responsibility is to its Client and this document does not exonerate parties to a transaction from exercising all their rights and obligations under the transaction documents. This document cannot be reproduced except in full, without prior written approval of the Company. Any unauthorized alteration, forgery or falsification of the content or appearance of this document is unlawful and offenders may be prosecuted to the fullest extent of the law. Unless otherwise stated the results shown in this test report refer only to the sample(s) tested and such sample(s) are retained for 30 days only.

Attention: To check the authenticity of testing / inspection report & certificate, please contact us at telephone: (86-755) 8307 1443, or email: CN.Doccheck@sgs.com

SGS Bldg, No.4, Jianghao Industrial Park, No.430, Jihua Road, Bantian, Longgang District, Shenzhen, China 518129 t (86-755) 25328888 f (86-755) 83106190 www.sgs.com.cn
中国·深圳·龙岗区坂田吉华路 430 号江源工业园 4 栋 SGS 大楼 邮编: 518129 t (86-755) 25328888 f (86-755) 83106190 e sgs.china@sgs.com

Member of the SGS Group (SGS SA)

Test Report

No.: T52110270182TC

Date: JUN 22, 2021

Page 9 of 83

Part No	Part Description	Restricted Substances	Results of EDXRF(1)	Screening Result of PHTH(2)	Result of Wet Chemical Testing(3) (mg/kg)	Conclusion on EU RoHS	Resubmitted Date
013	White cloth w/ multicolor printing (Starfish on mat)	Pb Cd Hg Cr(VI)▼ PBBs PBDEs DBP BBP DEHP DIBP	BL BL BL BL BL BL --- BL --- BL ---	--- --- --- --- --- --- BL BL BL BL	--- --- --- --- --- --- --- --- --- ---	Comply Comply Comply Comply Comply Comply Comply Comply Comply Comply	
014	White cloth w/ red printing (Logo on mat)	Pb Cd Hg Cr(VI)▼ PBBs PBDEs DBP BBP DEHP DIBP	BL BL BL BL BL BL --- BL --- BL ---	--- --- --- --- --- --- BL BL BL BL	--- --- --- --- --- --- --- --- --- ---	Comply Comply Comply Comply Comply Comply Comply Comply Comply Comply	
015	Grey cloth (Binding of mat)	Pb Cd Hg Cr(VI)▼ PBBs PBDEs DBP BBP DEHP DIBP	BL BL BL BL BL BL --- BL --- BL ---	--- --- --- --- --- --- BL BL BL BL	--- --- --- --- --- --- --- --- --- ---	Comply Comply Comply Comply Comply Comply Comply Comply Comply Comply	



SGS-CSTC (Shenzhen) Co., Ltd.
Shenzhen Branch Testing Center Hardlines

Unless otherwise agreed in writing, this document is issued by the Company subject to its General Conditions of Service printed overleaf, available on request or accessible at <http://www.sgs.com/en/Terms-and-Conditions.aspx> and, for electronic format documents, subject to Terms and Conditions for Electronic Documents at <http://www.sgs.com/en/Terms-and-Conditions/Terms-e-Documents.aspx>. Attention is drawn to the limitation of liability, indemnification and jurisdiction issues defined therein. Any holder of this document is advised that information contained hereon reflects the Company's findings at the time of its intervention only and within the limits of Client's instructions, if any. The Company's sole responsibility is to its Client and this document does not exonerate parties to a transaction from exercising all their rights and obligations under the transaction documents. This document cannot be reproduced except in full, without prior written approval of the Company. Any unauthorized alteration, forgery or falsification of the content or appearance of this document is unlawful and offenders may be prosecuted to the fullest extent of the law. Unless otherwise stated the results shown in this test report refer only to the sample(s) tested and such sample(s) are retained for 30 days only.

Attention: To check the authenticity of testing / inspection report & certificate, please contact us at telephone: (86-755) 8307 1443, or email: CN.Doccheck@sgs.com

SGS Bldg, No.4, Jianghao Industrial Park, No.430, Jihua Road, Bantian, Longgang District, Shenzhen, China 518129 t (86-755) 25328888 f (86-755) 83106190 www.sgs.com.cn
中国·深圳·龙岗区坂田吉华路 430 号江源工业园 4 栋 SGS 大楼 邮编: 518129 t (86-755) 25328888 f (86-755) 83106190 e sgs.china@sgs.com

Member of the SGS Group (SGS SA)

Test Report

No.: T52110270182TC

Date: JUN 22, 2021

Page 10 of 83

Part No	Part Description	Restricted Substances	Results of EDXRF(1)	Screening Result of PHTH(2)	Result of Wet Chemical Testing(3) (mg/kg)	Conclusion on EU RoHS	Resubmitted Date
016	Blue ribbon (On mat)	Pb Cd Hg Cr(VI)▼ PBBs PBDEs DBP BBP DEHP DIBP	BL BL BL BL BL BL --- BL --- BL ---	--- --- --- --- --- --- BL BL BL BL	--- --- --- --- --- --- --- --- --- ---	Comply Comply Comply Comply Comply Comply Comply Comply Comply Comply	
017	Pale green ribbon (On mat)	Pb Cd Hg Cr(VI)▼ PBBs PBDEs DBP BBP DEHP DIBP	BL BL BL BL BL BL --- BL --- BL ---	--- --- --- --- --- --- BL BL BL BL	--- --- --- --- --- --- --- --- --- ---	Comply Comply Comply Comply Comply Comply Comply Comply Comply Comply	
018	Orange ribbon (On mat)	Pb Cd Hg Cr(VI)▼ PBBs PBDEs DBP BBP DEHP DIBP	BL BL BL BL BL BL --- BL --- BL ---	--- --- --- --- --- --- BL BL BL BL	--- --- --- --- --- --- --- --- --- ---	Comply Comply Comply Comply Comply Comply Comply Comply Comply Comply	



SGS-CSTC (Shenzhen) Technical Services Co., Ltd.
Shenzhen Branch Testing Center Hardlines

Unless otherwise agreed in writing, this document is issued by the Company subject to its General Conditions of Service printed overleaf, available on request or accessible at <http://www.sgs.com/en/Terms-and-Conditions.aspx> and, for electronic format documents, subject to Terms and Conditions for Electronic Documents at <http://www.sgs.com/en/Terms-and-Conditions/Terms-e-Documents.aspx>. Attention is drawn to the limitation of liability, indemnification and jurisdiction issues defined therein. Any holder of this document is advised that information contained hereon reflects the Company's findings at the time of its intervention only and within the limits of Client's instructions, if any. The Company's sole responsibility is to its Client and this document does not exonerate parties to a transaction from exercising all their rights and obligations under the transaction documents. This document cannot be reproduced except in full, without prior written approval of the Company. Any unauthorized alteration, forgery or falsification of the content or appearance of this document is unlawful and offenders may be prosecuted to the fullest extent of the law. Unless otherwise stated the results shown in this test report refer only to the sample(s) tested and such sample(s) are retained for 30 days only.

Attention: To check the authenticity of testing / inspection report & certificate, please contact us at telephone: (86-755) 8307 1443, or email: CN.Doccheck@sgs.com

SGS Bldg, No.4, Jianghao Industrial Park, No.430, Jihua Road, Bantian, Longgang District, Shenzhen, China 518129 t (86-755) 25328888 f (86-755) 83106190 www.sgs.com.cn
中国·深圳·龙岗区坂田吉华路 430 号江源工业园 4 栋 SGS 大楼 邮编: 518129 t (86-755) 25328888 f (86-755) 83106190 e sgs.china@sgs.com

Member of the SGS Group (SGS SA)

Test Report

No.: T52110270182TC

Date: JUN 22, 2021

Page 11 of 83

Part No	Part Description	Restricted Substances	Results of EDXRF(1)	Screening Result of PHTH(2)	Result of Wet Chemical Testing(3) (mg/kg)	Conclusion on EU RoHS	Resubmitted Date
019	White cloth w/ silvery surface (Silvery fish on mat)	Pb Cd Hg Cr(VI)▼ PBBs PBDEs DBP BBP DEHP DIBP	BL BL BL BL BL BL --- BL --- BL ---	--- --- --- --- --- --- BL BL BL BL	--- --- --- --- --- --- --- --- --- ---	Comply Comply Comply Comply Comply Comply Comply Comply Comply Comply	
020	White brush knit w/ black printing (Wing of Manta Ray on mat)	Pb Cd Hg Cr(VI)▼ PBBs PBDEs DBP BBP DEHP DIBP	BL BL BL BL BL BL --- BL --- BL ---	--- --- --- --- --- --- BL BL BL BL	--- --- --- --- --- --- --- --- --- ---	Comply Comply Comply Comply Comply Comply Comply Comply Comply Comply	
021	Transparent plastic film (Wing of Manta Ray on mat)	Pb Cd Hg Cr(VI)▼ PBBs PBDEs DBP BBP DEHP DIBP	BL BL BL BL BL BL --- BL --- BL ---	--- --- --- --- --- --- BL BL BL BL	--- --- --- --- --- --- --- --- --- ---	Comply Comply Comply Comply Comply Comply Comply Comply Comply Comply	



SGS-CSTC (Shenzhen) Technical Services Co., Ltd.
Shenzhen Branch Testing Center Hardlines

Unless otherwise agreed in writing, this document is issued by the Company subject to its General Conditions of Service printed overleaf, available on request or accessible at <http://www.sgs.com/en/Terms-and-Conditions.aspx> and, for electronic format documents, subject to Terms and Conditions for Electronic Documents at <http://www.sgs.com/en/Terms-and-Conditions/Terms-e-Documents.aspx>. Attention is drawn to the limitation of liability, indemnification and jurisdiction issues defined therein. Any holder of this document is advised that information contained hereon reflects the Company's findings at the time of its intervention only and within the limits of Client's instructions, if any. The Company's sole responsibility is to its Client and this document does not exonerate parties to a transaction from exercising all their rights and obligations under the transaction documents. This document cannot be reproduced except in full, without prior written approval of the Company. Any unauthorized alteration, forgery or falsification of the content or appearance of this document is unlawful and offenders may be prosecuted to the fullest extent of the law. Unless otherwise stated the results shown in this test report refer only to the sample(s) tested and such sample(s) are retained for 30 days only.

Attention: To check the authenticity of testing / inspection report & certificate, please contact us at telephone: (86-755) 8307 1443, or email: CN.Doccheck@sgs.com

SGS Bldg, No.4, Jianghao Industrial Park, No.430, Jihua Road, Bantian, Longgang District, Shenzhen, China 518129 t (86-755) 25328888 f (86-755) 83106190 www.sgs.com.cn
中国·深圳·龙岗区坂田吉华路 430 号江源工业园 4 栋 SGS 大楼 邮编: 518129 t (86-755) 25328888 f (86-755) 83106190 e sgs.china@sgs.com

Member of the SGS Group (SGS SA)

Test Report

No.: T52110270182TC

Date: JUN 22, 2021

Page 12 of 83

Part No	Part Description	Restricted Substances	Results of EDXRF(1)	Screening Result of PHTH(2)	Result of Wet Chemical Testing(3) (mg/kg)	Conclusion on EU RoHS	Resubmitted Date
022	White fiber (Stuffing of mat)	Pb Cd Hg Cr(VI)▼ PBBs PBDEs DBP BBP DEHP DIBP	BL BL BL BL BL BL --- BL --- BL ---	--- --- --- --- --- --- BL BL BL BL	--- --- --- --- --- --- --- --- --- ---	Comply Comply Comply Comply Comply Comply Comply Comply Comply Comply	
023	Beige non-woven (Bottom of mat)	Pb Cd Hg Cr(VI)▼ PBBs PBDEs DBP BBP DEHP DIBP	BL BL BL BL BL BL --- BL --- BL ---	--- --- --- --- --- --- BL BL BL BL	--- --- --- --- --- --- --- --- --- ---	Comply Comply Comply Comply Comply Comply Comply Comply Comply Comply	
024	Beige webbing (Fastener on mat)	Pb Cd Hg Cr(VI)▼ PBBs PBDEs DBP BBP DEHP DIBP	BL BL BL BL BL BL --- BL --- BL ---	--- --- --- --- --- --- BL BL BL BL	--- --- --- --- --- --- --- --- --- ---	Comply Comply Comply Comply Comply Comply Comply Comply Comply Comply	



SGS-CSTC (Shenzhen) Technical Services Co., Ltd.
Shenzhen Branch Testing Center Hardlines

Unless otherwise agreed in writing, this document is issued by the Company subject to its General Conditions of Service printed overleaf, available on request or accessible at <http://www.sgs.com/en/Terms-and-Conditions.aspx> and, for electronic format documents, subject to Terms and Conditions for Electronic Documents at <http://www.sgs.com/en/Terms-and-Conditions/Terms-e-Documents.aspx>. Attention is drawn to the limitation of liability, indemnification and jurisdiction issues defined therein. Any holder of this document is advised that information contained hereon reflects the Company's findings at the time of its intervention only and within the limits of Client's instructions, if any. The Company's sole responsibility is to its Client and this document does not exonerate parties to a transaction from exercising all their rights and obligations under the transaction documents. This document cannot be reproduced except in full, without prior written approval of the Company. Any unauthorized alteration, forgery or falsification of the content or appearance of this document is unlawful and offenders may be prosecuted to the fullest extent of the law. Unless otherwise stated the results shown in this test report refer only to the sample(s) tested and such sample(s) are retained for 30 days only.

Attention: To check the authenticity of testing / inspection report & certificate, please contact us at telephone: (86-755) 8307 1443, or email: CN.Doccheck@sgs.com

SGS Bldg, No.4, Jianghao Industrial Park, No.430, Jihua Road, Bantian, Longgang District, Shenzhen, China 518129 t (86-755) 25328888 f (86-755) 83106190 www.sgs.com.cn
中国·深圳·龙岗区坂田吉华路 430 号江源工业园 4 栋 SGS 大楼 邮编: 518129 t (86-755) 25328888 f (86-755) 83106190 e sgs.china@sgs.com

Member of the SGS Group (SGS SA)

Test Report

No.: T52110270182TC

Date: JUN 22, 2021

Page 13 of 83

Part No	Part Description	Restricted Substances	Results of EDXRF(1)	Screening Result of PHTH(2)	Result of Wet Chemical Testing(3) (mg/kg)	Conclusion on EU RoHS	Resubmitted Date
025	White satin w/ black printing (Sewn-in label on mat)	Pb Cd Hg Cr(VI)▼ PBBs PBDEs DBP BBP DEHP DIBP	BL BL BL BL BL BL --- BL --- BL ---	--- --- --- --- --- --- BL BL BL BL	--- --- --- --- --- --- --- --- --- ---	Comply Comply Comply Comply Comply Comply Comply Comply Comply Comply	
026	White satin w/ multicolor printing (Sewn-in label on mat)	Pb Cd Hg Cr(VI)▼ PBBs PBDEs DBP BBP DEHP DIBP	BL BL BL BL BL BL --- BL --- BL ---	--- --- --- --- --- --- BL BL BL BL	--- --- --- --- --- --- --- --- --- ---	Comply Comply Comply Comply Comply Comply Comply Comply Comply Comply	
027	White satin w/ orange printing (Sewn-in label on mat)	Pb Cd Hg Cr(VI)▼ PBBs PBDEs DBP BBP DEHP DIBP	BL BL BL BL BL BL --- BL --- BL ---	--- --- --- --- --- --- BL BL BL BL	--- --- --- --- --- --- --- --- --- ---	Comply Comply Comply Comply Comply Comply Comply Comply Comply Comply	



SGS-CSTC (Shenzhen) Technical Services Co., Ltd.
Shenzhen Branch Testing Center Hardlines

Unless otherwise agreed in writing, this document is issued by the Company subject to its General Conditions of Service printed overleaf, available on request or accessible at <http://www.sgs.com/en/Terms-and-Conditions.aspx> and, for electronic format documents, subject to Terms and Conditions for Electronic Documents at <http://www.sgs.com/en/Terms-and-Conditions/Terms-e-Documents.aspx>. Attention is drawn to the limitation of liability, indemnification and jurisdiction issues defined therein. Any holder of this document is advised that information contained hereon reflects the Company's findings at the time of its intervention only and within the limits of Client's instructions, if any. The Company's sole responsibility is to its Client and this document does not exonerate parties to a transaction from exercising all their rights and obligations under the transaction documents. This document cannot be reproduced except in full, without prior written approval of the Company. Any unauthorized alteration, forgery or falsification of the content or appearance of this document is unlawful and offenders may be prosecuted to the fullest extent of the law. Unless otherwise stated the results shown in this test report refer only to the sample(s) tested and such sample(s) are retained for 30 days only.

Attention: To check the authenticity of testing / inspection report & certificate, please contact us at telephone: (86-755) 8307 1443, or email: CN.Doccheck@sgs.com

SGS Bldg, No.4, Jianghao Industrial Park, No.430, Jihua Road, Bantian, Longgang District, Shenzhen, China 518129 t (86-755) 25328888 f (86-755) 83106190 www.sgs.com.cn
中国·深圳·龙岗区坂田吉华路 430 号江源工业园 4 栋 SGS 大楼 邮编: 518129 t (86-755) 25328888 f (86-755) 83106190 e sgs.china@sgs.com

Member of the SGS Group (SGS SA)

Test Report

No.: T52110270182TC

Date: JUN 22, 2021

Page 14 of 83

Part No	Part Description	Restricted Substances	Results of EDXRF(1)	Screening Result of PHTH(2)	Result of Wet Chemical Testing(3) (mg/kg)	Conclusion on EU RoHS	Resubmitted Date
028	White cloth w/ grey printing (Pole)	Pb Cd Hg Cr(VI)▼ PBBs PBDEs DBP BBP DEHP DIBP	BL BL BL BL BL BL --- BL --- BL ---	--- --- --- --- --- --- BL BL BL BL	--- --- --- --- --- --- --- --- --- ---	Comply Comply Comply Comply Comply Comply Comply Comply Comply Comply	
029	Dull green plastic (Fastener on pole)	Pb Cd Hg Cr(VI)▼ PBBs PBDEs DBP BBP DEHP DIBP	BL BL BL BL BL BL --- BL --- BL ---	--- --- --- --- --- --- BL BL BL BL	--- --- --- --- --- --- --- --- --- ---	Comply Comply Comply Comply Comply Comply Comply Comply Comply Comply	
030	Dull green plastic (Big hook on pole)	Pb Cd Hg Cr(VI)▼ PBBs PBDEs DBP BBP DEHP DIBP	BL BL BL BL BL BL --- BL --- BL ---	--- --- --- --- --- --- BL BL BL BL	--- --- --- --- --- --- --- --- --- ---	Comply Comply Comply Comply Comply Comply Comply Comply Comply Comply	



SGS-CSTC (Shenzhen) Technical Services Co., Ltd.
Shenzhen Branch Testing Center Hardlines

Unless otherwise agreed in writing, this document is issued by the Company subject to its General Conditions of Service printed overleaf, available on request or accessible at <http://www.sgs.com/en/Terms-and-Conditions.aspx> and, for electronic format documents, subject to Terms and Conditions for Electronic Documents at <http://www.sgs.com/en/Terms-and-Conditions/Terms-e-Documents.aspx>. Attention is drawn to the limitation of liability, indemnification and jurisdiction issues defined therein. Any holder of this document is advised that information contained hereon reflects the Company's findings at the time of its intervention only and within the limits of Client's instructions, if any. The Company's sole responsibility is to its Client and this document does not exonerate parties to a transaction from exercising all their rights and obligations under the transaction documents. This document cannot be reproduced except in full, without prior written approval of the Company. Any unauthorized alteration, forgery or falsification of the content or appearance of this document is unlawful and offenders may be prosecuted to the fullest extent of the law. Unless otherwise stated the results shown in this test report refer only to the sample(s) tested and such sample(s) are retained for 30 days only.

Attention: To check the authenticity of testing / inspection report & certificate, please contact us at telephone: (86-755) 8307 1443, or email: CN.Doccheck@sgs.com

SGS Bldg, No.4, Jianghao Industrial Park, No.430, Jihua Road, Bantian, Longgang District, Shenzhen, China 518129 t (86-755) 25328888 f (86-755) 83106190 www.sgs.com.cn
中国·深圳·龙岗区坂田吉华路 430 号江源工业园 4 栋 SGS 大楼 邮编: 518129 t (86-755) 25328888 f (86-755) 83106190 e sgs.china@sgs.com

Member of the SGS Group (SGS SA)

Test Report

No.: T52110270182TC

Date: JUN 22, 2021

Page 15 of 83

Part No	Part Description	Restricted Substances	Results of EDXRF(1)	Screening Result of PHTH(2)	Result of Wet Chemical Testing(3) (mg/kg)	Conclusion on EU RoHS	Resubmitted Date
031	White foam (In pole)	Pb Cd Hg Cr(VI)▼ PBBs PBDEs DBP BBP DEHP DIBP	BL BL BL BL BL BL --- BL --- BL ---	--- --- --- --- --- --- BL BL BL BL	--- --- --- --- --- --- --- --- --- ---	Comply Comply Comply Comply Comply Comply Comply Comply Comply Comply	
032	White fiberglass (In pole)	Pb Cd Hg Cr(VI)▼ PBBs PBDEs DBP BBP DEHP DIBP	BL BL BL BL BL BL --- BL --- BL ---	--- --- --- --- --- --- BL BL BL BL	--- --- --- --- --- --- --- --- --- ---	Comply Comply Comply Comply Comply Comply Comply Comply Comply Comply	
033	White plastic part (Fastener in pole)	Pb Cd Hg Cr(VI)▼ PBBs PBDEs DBP BBP DEHP DIBP	BL BL BL BL BL BL --- BL --- BL ---	--- --- --- --- --- --- BL BL BL BL	--- --- --- --- --- --- --- --- --- ---	Comply Comply Comply Comply Comply Comply Comply Comply Comply Comply	



SGS-CSTC (Shenzhen) Technical Services Co., Ltd.
Shenzhen Branch Testing Center Hardlines

Unless otherwise agreed in writing, this document is issued by the Company subject to its General Conditions of Service printed overleaf, available on request or accessible at <http://www.sgs.com/en/Terms-and-Conditions.aspx> and, for electronic format documents, subject to Terms and Conditions for Electronic Documents at <http://www.sgs.com/en/Terms-and-Conditions/Terms-e-Document.aspx>. Attention is drawn to the limitation of liability, indemnification and jurisdiction issues defined therein. Any holder of this document is advised that information contained hereon reflects the Company's findings at the time of its intervention only and within the limits of Client's instructions, if any. The Company's sole responsibility is to its Client and this document does not exonerate parties to a transaction from exercising all their rights and obligations under the transaction documents. This document cannot be reproduced except in full, without prior written approval of the Company. Any unauthorized alteration, forgery or falsification of the content or appearance of this document is unlawful and offenders may be prosecuted to the fullest extent of the law. Unless otherwise stated the results shown in this test report refer only to the sample(s) tested and such sample(s) are retained for 30 days only.

Attention: To check the authenticity of testing / inspection report & certificate, please contact us at telephone: (86-755) 8307 1443, or email: CN.Doccheck@sgs.com

SGS Bldg, No.4, Jianghao Industrial Park, No.430, Jihua Road, Bantian, Longgang District, Shenzhen, China 518129 t (86-755) 25328888 f (86-755) 83106190 www.sgs.com.cn
中国·深圳·龙岗区坂田吉华路 430 号江源工业园 4 栋 SGS 大楼 邮编: 518129 t (86-755) 25328888 f (86-755) 83106190 e sgs.china@sgs.com

Member of the SGS Group (SGS SA)

Test Report

No.: T52110270182TC

Date: JUN 22, 2021

Page 16 of 83

Part No	Part Description	Restricted Substances	Results of EDXRF(1)	Screening Result of PHTH(2)	Result of Wet Chemical Testing(3) (mg/kg)	Conclusion on EU RoHS	Resubmitted Date
034	Light green soft plastic part (Back of hang turtle)	Pb Cd Hg Cr(VI)▼ PBBs PBDEs DBP BBP DEHP DIBP	BL BL BL BL BL BL --- BL --- BL ---	--- --- --- --- --- --- BL BL BL BL	--- --- --- --- --- --- --- --- --- ---	Comply Comply Comply Comply Comply Comply Comply Comply Comply Comply	
035	White plastic part (Hook of hang turtle)	Pb Cd Hg Cr(VI)▼ PBBs PBDEs DBP BBP DEHP DIBP	BL BL BL BL BL BL --- BL --- BL ---	--- --- --- --- --- --- BL BL BL BL	--- --- --- --- --- --- --- --- --- ---	Comply Comply Comply Comply Comply Comply Comply Comply Comply Comply	
036	White fiber (Stuffing in hang turtle)	Pb Cd Hg Cr(VI)▼ PBBs PBDEs DBP BBP DEHP DIBP	BL BL BL BL BL BL --- BL --- BL ---	--- --- --- --- --- --- BL BL BL BL	--- --- --- --- --- --- --- --- --- ---	Comply Comply Comply Comply Comply Comply Comply Comply Comply Comply	



SGS-CSTC (Shenzhen) Co., Ltd.
Shenzhen Branch Testing Center Hardlines

Unless otherwise agreed in writing, this document is issued by the Company subject to its General Conditions of Service printed overleaf, available on request or accessible at <http://www.sgs.com/en/Terms-and-Conditions.aspx> and, for electronic format documents, subject to Terms and Conditions for Electronic Documents at <http://www.sgs.com/en/Terms-and-Conditions/Terms-e-Documents.aspx>. Attention is drawn to the limitation of liability, indemnification and jurisdiction issues defined therein. Any holder of this document is advised that information contained hereon reflects the Company's findings at the time of its intervention only and within the limits of Client's instructions, if any. The Company's sole responsibility is to its Client and this document does not exonerate parties to a transaction from exercising all their rights and obligations under the transaction documents. This document cannot be reproduced except in full, without prior written approval of the Company. Any unauthorized alteration, forgery or falsification of the content or appearance of this document is unlawful and offenders may be prosecuted to the fullest extent of the law. Unless otherwise stated the results shown in this test report refer only to the sample(s) tested and such sample(s) are retained for 30 days only.

Attention: To check the authenticity of testing / inspection report & certificate, please contact us at telephone: (86-755) 8307 1443, or email: CN.Doccheck@sgs.com

SGS Bldg, No.4, Jianghao Industrial Park, No.430, Jihua Road, Bantian, Longgang District, Shenzhen, China 518129 t (86-755) 25328888 f (86-755) 83106190 www.sgs.com.cn
中国·深圳·龙岗区坂田吉华路 430 号江源工业园 4 栋 SGS 大楼 邮编: 518129 t (86-755) 25328888 f (86-755) 83106190 e sgs.china@sgs.com

Member of the SGS Group (SGS SA)

Test Report

No.: T52110270182TC

Date: JUN 22, 2021

Page 17 of 83

Part No	Part Description	Restricted Substances	Results of EDXRF(1)	Screening Result of PHTH(2)	Result of Wet Chemical Testing(3) (mg/kg)	Conclusion on EU RoHS	Resubmitted Date
037	White brush knit w/ multicolor printing & dry glue (Feet of hang turtle)	Pb Cd Hg Cr(VI)▼ PBBs PBDEs DBP BBP DEHP DIBP	BL BL BL BL BL BL --- BL --- BL ---	--- --- --- --- --- --- BL BL BL BL	--- --- --- --- --- --- --- --- --- ---	Comply Comply Comply Comply Comply Comply Comply Comply Comply Comply	
038	White brush knit w/ multicolor printing (Head of hang turtle)	Pb Cd Hg Cr(VI)▼ PBBs PBDEs DBP BBP DEHP DIBP	BL BL BL BL BL BL --- BL --- BL ---	--- --- --- --- --- --- BL BL BL BL	--- --- --- --- --- --- --- --- --- ---	Comply Comply Comply Comply Comply Comply Comply Comply Comply Comply	
039	White webbing (Inner binding of hang turtle)	Pb Cd Hg Cr(VI)▼ PBBs PBDEs DBP BBP DEHP DIBP	BL BL BL BL BL BL --- BL --- BL ---	--- --- --- --- --- --- BL BL BL BL	--- --- --- --- --- --- --- --- --- ---	Comply Comply Comply Comply Comply Comply Comply Comply Comply Comply	



SGS-CSTC (Shenzhen) Technical Services Co., Ltd.
Shenzhen Branch Testing Center Hardlines

Unless otherwise agreed in writing, this document is issued by the Company subject to its General Conditions of Service printed overleaf, available on request or accessible at <http://www.sgs.com/en/Terms-and-Conditions.aspx> and, for electronic format documents, subject to Terms and Conditions for Electronic Documents at <http://www.sgs.com/en/Terms-and-Conditions/Terms-e-Documents.aspx>. Attention is drawn to the limitation of liability, indemnification and jurisdiction issues defined therein. Any holder of this document is advised that information contained hereon reflects the Company's findings at the time of its intervention only and within the limits of Client's instructions, if any. The Company's sole responsibility is to its Client and this document does not exonerate parties to a transaction from exercising all their rights and obligations under the transaction documents. This document cannot be reproduced except in full, without prior written approval of the Company. Any unauthorized alteration, forgery or falsification of the content or appearance of this document is unlawful and offenders may be prosecuted to the fullest extent of the law. Unless otherwise stated the results shown in this test report refer only to the sample(s) tested and such sample(s) are retained for 30 days only.

Attention: To check the authenticity of testing / inspection report & certificate, please contact us at telephone: (86-755) 8307 1443, or email: CN.Doccheck@sgs.com

SGS Bldg, No.4, Jianghao Industrial Park, No.430, Jihua Road, Bantian, Longgang District, Shenzhen, China 518129 t (86-755) 25328888 f (86-755) 83106190 www.sgs.com.cn
中国·深圳·龙岗区坂田吉华路 430 号江源工业园 4 栋 SGS 大楼 邮编: 518129 t (86-755) 25328888 f (86-755) 83106190 e sgs.china@sgs.com

Member of the SGS Group (SGS SA)

Test Report

No.: T52110270182TC

Date: JUN 22, 2021

Page 18 of 83

Part No	Part Description	Restricted Substances	Results of EDXRF(1)	Screening Result of PHTH(2)	Result of Wet Chemical Testing(3) (mg/kg)	Conclusion on EU RoHS	Resubmitted Date
040	White cloth (Bag in hang turtle)	Pb Cd Hg Cr(VI)▼ PBBs PBDEs DBP BBP DEHP DIBP	BL BL BL BL BL BL --- BL --- BL ---	--- --- --- --- --- --- BL BL BL BL	--- --- --- --- --- --- --- --- --- ---	Comply Comply Comply Comply Comply Comply Comply Comply Comply Comply	
041	White plastic shell (Box in hang turtle)	Pb Cd Hg Cr(VI)▼ PBBs PBDEs DBP BBP DEHP DIBP	BL BL BL BL BL BL --- BL --- BL ---	--- --- --- --- --- --- BL BL BL BL	--- --- --- --- --- --- --- --- --- ---	Comply Comply Comply Comply Comply Comply Comply Comply Comply Comply	
042	Translucent plastic bead (Box in hang turtle)	Pb Cd Hg Cr(VI)▼ PBBs PBDEs DBP BBP DEHP DIBP	BL BL BL BL BL BL --- BL --- BL ---	--- --- --- --- --- --- BL BL BL BL	--- --- --- --- --- --- --- --- --- ---	Comply Comply Comply Comply Comply Comply Comply Comply Comply Comply	



SGS-CSTC (Shenzhen) Technical Services Co., Ltd.
Shenzhen Branch Testing Center Hardlines

Unless otherwise agreed in writing, this document is issued by the Company subject to its General Conditions of Service printed overleaf, available on request or accessible at <http://www.sgs.com/en/Terms-and-Conditions.aspx> and, for electronic format documents, subject to Terms and Conditions for Electronic Documents at <http://www.sgs.com/en/Terms-and-Conditions/Terms-e-Documents.aspx>. Attention is drawn to the limitation of liability, indemnification and jurisdiction issues defined therein. Any holder of this document is advised that information contained hereon reflects the Company's findings at the time of its intervention only and within the limits of Client's instructions, if any. The Company's sole responsibility is to its Client and this document does not exonerate parties to a transaction from exercising all their rights and obligations under the transaction documents. This document cannot be reproduced except in full, without prior written approval of the Company. Any unauthorized alteration, forgery or falsification of the content or appearance of this document is unlawful and offenders may be prosecuted to the fullest extent of the law. Unless otherwise stated the results shown in this test report refer only to the sample(s) tested and such sample(s) are retained for 30 days only.

Attention: To check the authenticity of testing / inspection report & certificate, please contact us at telephone: (86-755) 8307 1443, or email: CN.Doccheck@sgs.com

SGS Bldg, No.4, Jianghao Industrial Park, No.430, Jihua Road, Bantian, Longgang District, Shenzhen, China 518129 t (86-755) 25328888 f (86-755) 83106190 www.sgs.com.cn
中国·深圳·龙岗区坂田吉华路 430 号江源工业园 4 栋 SGS 大楼 邮编: 518129 t (86-755) 25328888 f (86-755) 83106190 e sgs.china@sgs.com

Member of the SGS Group (SGS SA)

Test Report

No.: T52110270182TC

Date: JUN 22, 2021

Page 19 of 83

Part No	Part Description	Restricted Substances	Results of EDXRF(1)	Screening Result of PHTH(2)	Result of Wet Chemical Testing(3) (mg/kg)	Conclusion on EU RoHS	Resubmitted Date
043	Dull white plastic bead (Box in hang turtle)	Pb Cd Hg Cr(VI)▼ PBBs PBDEs DBP BBP DEHP DIBP	BL BL BL BL BL BL --- BL --- BL ---	--- --- --- --- --- --- BL BL BL BL	--- --- --- --- --- --- --- --- --- ---	Comply Comply Comply Comply Comply Comply Comply Comply Comply Comply	
044	White plastic bead (Box in hang turtle)	Pb Cd Hg Cr(VI)▼ PBBs PBDEs DBP BBP DEHP DIBP	BL BL BL BL BL BL --- BL --- BL ---	--- --- --- --- --- --- BL BL BL BL	--- --- --- --- --- --- --- --- --- ---	Comply Comply Comply Comply Comply Comply Comply Comply Comply Comply	
045	Orange soft plastic part (Hang star)	Pb Cd Hg Cr(VI)▼ PBBs PBDEs DBP BBP DEHP DIBP	BL BL BL BL BL BL --- BL --- BL ---	--- --- --- --- --- --- BL BL BL BL	--- --- --- --- --- --- --- --- --- ---	Comply Comply Comply Comply Comply Comply Comply Comply Comply Comply	



SGS-CSTC (Shenzhen) Technical Services Co., Ltd.
Shenzhen Branch Testing Center Hardlines

Unless otherwise agreed in writing, this document is issued by the Company subject to its General Conditions of Service printed overleaf, available on request or accessible at <http://www.sgs.com/en/Terms-and-Conditions.aspx> and, for electronic format documents, subject to Terms and Conditions for Electronic Documents at <http://www.sgs.com/en/Terms-and-Conditions/Terms-e-Documents.aspx>. Attention is drawn to the limitation of liability, indemnification and jurisdiction issues defined therein. Any holder of this document is advised that information contained hereon reflects the Company's findings at the time of its intervention only and within the limits of Client's instructions, if any. The Company's sole responsibility is to its Client and this document does not exonerate parties to a transaction from exercising all their rights and obligations under the transaction documents. This document cannot be reproduced except in full, without prior written approval of the Company. Any unauthorized alteration, forgery or falsification of the content or appearance of this document is unlawful and offenders may be prosecuted to the fullest extent of the law. Unless otherwise stated the results shown in this test report refer only to the sample(s) tested and such sample(s) are retained for 30 days only.

Attention: To check the authenticity of testing / inspection report & certificate, please contact us at telephone: (86-755) 8307 1443, or email: CN.Doccheck@sgs.com

SGS Bldg, No.4, Jianghao Industrial Park, No.430, Jihua Road, Bantian, Longgang District, Shenzhen, China 518129 t (86-755) 25328888 f (86-755) 83106190 www.sgs.com.cn
中国·深圳·龙岗区坂田吉华路 430 号江源工业园 4 栋 SGS 大楼 邮编: 518129 t (86-755) 25328888 f (86-755) 83106190 e sgs.china@sgs.com

Member of the SGS Group (SGS SA)

Test Report

No.: T52110270182TC

Date: JUN 22, 2021

Page 20 of 83

Part No	Part Description	Restricted Substances	Results of EDXRF(1)	Screening Result of PHTH(2)	Result of Wet Chemical Testing(3) (mg/kg)	Conclusion on EU RoHS	Resubmitted Date
046	Orange soft plastic part (Hang shell)	Pb Cd Hg Cr(VI)▼ PBBs PBDEs DBP BBP DEHP DIBP	BL BL BL BL BL BL --- BL --- BL ---	--- --- --- --- --- --- BL BL BL BL	--- --- --- --- --- --- --- --- --- ---	Comply Comply Comply Comply Comply Comply Comply Comply Comply Comply	
047	Transparent plastic part (Hang shell)	Pb Cd Hg Cr(VI)▼ PBBs PBDEs DBP BBP DEHP DIBP	BL BL BL BL BL BL --- BL --- BL ---	--- --- --- --- --- --- BL BL BL BL	--- --- --- --- --- --- --- --- --- ---	Comply Comply Comply Comply Comply Comply Comply Comply Comply Comply	
048	Light blue plastic part (Inside hang shell)	Pb Cd Hg Cr(VI)▼ PBBs PBDEs DBP BBP DEHP DIBP	BL BL BL BL BL BL --- BL --- BL ---	--- --- --- --- --- --- BL BL BL BL	--- --- --- --- --- --- --- --- --- ---	Comply Comply Comply Comply Comply Comply Comply Comply Comply Comply	



SGS-CSTC 检验检测专用章
Inspection & Testing Services
Shenzhen Branch Testing Center Handlines

Unless otherwise agreed in writing, this document is issued by the Company subject to its General Conditions of Service printed overleaf, available on request or accessible at <http://www.sgs.com/en/Terms-and-Conditions.aspx> and, for electronic format documents, subject to Terms and Conditions for Electronic Documents at <http://www.sgs.com/en/Terms-and-Conditions/Terms-e-Documents.aspx>. Attention is drawn to the limitation of liability, indemnification and jurisdiction issues defined therein. Any holder of this document is advised that information contained hereon reflects the Company's findings at the time of its intervention only and within the limits of Client's instructions, if any. The Company's sole responsibility is to its Client and this document does not exonerate parties to a transaction from exercising all their rights and obligations under the transaction documents. This document cannot be reproduced except in full, without prior written approval of the Company. Any unauthorized alteration, forgery or falsification of the content or appearance of this document is unlawful and offenders may be prosecuted to the fullest extent of the law. Unless otherwise stated the results shown in this test report refer only to the sample(s) tested and such sample(s) are retained for 30 days only.

Attention: To check the authenticity of testing / inspection report & certificate, please contact us at telephone: (86-755) 8307 1443, or email: CN.Doccheck@sgs.com

SGS Bldg, No.4, Jianghao Industrial Park, No.430, Jihua Road, Bantian, Longgang District, Shenzhen, China 518129 t (86-755) 25328888 f (86-755) 83106190 www.sgs.com
中国·深圳·龙岗区坂田吉华路 430 号江源工业园 4 栋 SGS 大楼 邮编: 518129 t (86-755) 25328888 f (86-755) 83106190 e.sgs.china@sgs.com

Member of the SGS Group (SGS SA)

Test Report

No.: T52110270182TC

Date: JUN 22, 2021

Page 21 of 83

Part No	Part Description	Restricted Substances	Results of EDXRF(1)	Screening Result of PHTH(2)	Result of Wet Chemical Testing(3) (mg/kg)	Conclusion on EU RoHS	Resubmitted Date
049	Light blue plastic part (Hang mirror)	Pb Cd Hg Cr(VI)▼ PBBs PBDEs DBP BBP DEHP DIBP	BL BL BL BL BL BL --- BL --- BL ---	--- --- --- --- --- --- BL BL BL BL	--- --- --- --- --- --- --- --- --- ---	Comply Comply Comply Comply Comply Comply Comply Comply Comply Comply	
050	Silvery plastic sheet w/ double side glue (Hang mirror)	Pb Cd Hg Cr(VI)▼ PBBs PBDEs DBP BBP DEHP DIBP	BL BL BL BL BL BL --- BL --- BL ---	--- --- --- --- --- --- BL BL BL BL	--- --- --- --- --- --- --- --- --- ---	Comply Comply Comply Comply Comply Comply Comply Comply Comply Comply	
051	White cloth w/ black printing (Music box)	Pb Cd Hg Cr(VI)▼ PBBs PBDEs DBP BBP DEHP DIBP	BL BL BL BL BL BL --- BL --- BL ---	--- --- --- --- --- --- BL BL BL BL	--- --- --- --- --- --- --- --- --- ---	Comply Comply Comply Comply Comply Comply Comply Comply Comply Comply	



SGS-CSTC (Shenzhen) Technical Services Co., Ltd.
Shenzhen Branch Testing Center Hardlines

Unless otherwise agreed in writing, this document is issued by the Company subject to its General Conditions of Service printed overleaf, available on request or accessible at <http://www.sgs.com/en/Terms-and-Conditions.aspx> and, for electronic format documents, subject to Terms and Conditions for Electronic Documents at <http://www.sgs.com/en/Terms-and-Conditions/Terms-e-Documents.aspx>. Attention is drawn to the limitation of liability, indemnification and jurisdiction issues defined therein. Any holder of this document is advised that information contained hereon reflects the Company's findings at the time of its intervention only and within the limits of Client's instructions, if any. The Company's sole responsibility is to its Client and this document does not exonerate parties to a transaction from exercising all their rights and obligations under the transaction documents. This document cannot be reproduced except in full, without prior written approval of the Company. Any unauthorized alteration, forgery or falsification of the content or appearance of this document is unlawful and offenders may be prosecuted to the fullest extent of the law. Unless otherwise stated the results shown in this test report refer only to the sample(s) tested and such sample(s) are retained for 30 days only.

Attention: To check the authenticity of testing / inspection report & certificate, please contact us at telephone: (86-755) 8307 1443, or email: CN.Doccheck@sgs.com

SGS Bldg, No.4, Jianghao Industrial Park, No.430, Jihua Road, Bantian, Longgang District, Shenzhen, China 518129 t (86-755) 25328888 f (86-755) 83106190 www.sgs.com.cn
中国·深圳·龙岗区坂田吉华路 430 号江源工业园 4 栋 SGS 大楼 邮编: 518129 t (86-755) 25328888 f (86-755) 83106190 e sgs.china@sgs.com

Member of the SGS Group (SGS SA)

Test Report

No.: T52110270182TC

Date: JUN 22, 2021

Page 22 of 83

Part No	Part Description	Restricted Substances	Results of EDXRF(1)	Screening Result of PHTH(2)	Result of Wet Chemical Testing(3) (mg/kg)	Conclusion on EU RoHS	Resubmitted Date
052	Green cord (On music box)	Pb Cd Hg Cr(VI)▼ PBBs PBDEs DBP BBP DEHP DIBP	BL BL BL BL BL BL --- BL --- BL ---	--- --- --- --- --- --- BL BL BL BL	--- --- --- --- --- --- --- --- --- ---	Comply Comply Comply Comply Comply Comply Comply Comply Comply Comply	
053	White cloth w/ purple printing (Purple fish on music box)	Pb Cd Hg Cr(VI)▼ PBBs PBDEs DBP BBP DEHP DIBP	BL BL BL BL BL BL --- BL --- BL ---	--- --- --- --- --- --- BL BL BL BL	--- --- --- --- --- --- --- --- --- ---	Comply Comply Comply Comply Comply Comply Comply Comply Comply Comply	
054	Green ribbon (On music box)	Pb Cd Hg Cr(VI)▼ PBBs PBDEs DBP BBP DEHP DIBP	BL BL BL BL BL BL --- BL --- BL ---	--- --- --- --- --- --- BL BL BL BL	--- --- --- --- --- --- --- --- --- ---	Comply Comply Comply Comply Comply Comply Comply Comply Comply Comply	



SGS-CSTC (Shenzhen) Technical Services Co., Ltd.
Shenzhen Branch Testing Center Hardlines

Unless otherwise agreed in writing, this document is issued by the Company subject to its General Conditions of Service printed overleaf, available on request or accessible at <http://www.sgs.com/en/Terms-and-Conditions.aspx> and, for electronic format documents, subject to Terms and Conditions for Electronic Documents at <http://www.sgs.com/en/Terms-and-Conditions/Terms-e-Documents.aspx>. Attention is drawn to the limitation of liability, indemnification and jurisdiction issues defined therein. Any holder of this document is advised that information contained hereon reflects the Company's findings at the time of its intervention only and within the limits of Client's instructions, if any. The Company's sole responsibility is to its Client and this document does not exonerate parties to a transaction from exercising all their rights and obligations under the transaction documents. This document cannot be reproduced except in full, without prior written approval of the Company. Any unauthorized alteration, forgery or falsification of the content or appearance of this document is unlawful and offenders may be prosecuted to the fullest extent of the law. Unless otherwise stated the results shown in this test report refer only to the sample(s) tested and such sample(s) are retained for 30 days only.

Attention: To check the authenticity of testing / inspection report & certificate, please contact us at telephone: (86-755) 8307 1443, or email: CN.Doccheck@sgs.com

SGS Bldg, No.4, Jianghao Industrial Park, No.430, Jihua Road, Bantian, Longgang District, Shenzhen, China 518129 t (86-755) 25328888 f (86-755) 83106190 www.sgs.com
中国·深圳·龙岗区坂田吉华路 430 号江源工业园 4 栋 SGS 大楼 邮编: 518129 t (86-755) 25328888 f (86-755) 83106190 e.sgs.china@sgs.com

Member of the SGS Group (SGS SA)

Test Report

No.: T52110270182TC

Date: JUN 22, 2021

Page 23 of 83

Part No	Part Description	Restricted Substances	Results of EDXRF(1)	Screening Result of PHTH(2)	Result of Wet Chemical Testing(3) (mg/kg)	Conclusion on EU RoHS	Resubmitted Date
055	White brush knit w/ green printing (Green fish on music box)	Pb Cd Hg Cr(VI)▼ PBBs PBDEs DBP BBP DEHP DIBP	BL BL BL BL BL BL --- BL --- BL ---	--- --- --- --- --- --- BL BL BL BL	--- --- --- --- --- --- --- --- --- ---	Comply Comply Comply Comply Comply Comply Comply Comply Comply Comply	
056	White sponge (In music box)	Pb Cd Hg Cr(VI)▼ PBBs PBDEs DBP BBP DEHP DIBP	BL BL BL BL BL BL --- BL --- BL ---	--- --- --- --- --- --- BL BL BL BL	--- --- --- --- --- --- --- --- --- ---	Comply Comply Comply Comply Comply Comply Comply Comply Comply Comply	
057	White mesh (In music box)	Pb Cd Hg Cr(VI)▼ PBBs PBDEs DBP BBP DEHP DIBP	BL BL BL BL BL BL --- BL --- BL ---	--- --- --- --- --- --- BL BL BL BL	--- --- --- --- --- --- --- --- --- ---	Comply Comply Comply Comply Comply Comply Comply Comply Comply Comply	



SGS-CSTC (Shenzhen) Co., Ltd.
Shenzhen Branch Testing Center Hardlines

Unless otherwise agreed in writing, this document is issued by the Company subject to its General Conditions of Service printed overleaf, available on request or accessible at <http://www.sgs.com/en/Terms-and-Conditions.aspx> and, for electronic format documents, subject to Terms and Conditions for Electronic Documents at <http://www.sgs.com/en/Terms-and-Conditions/Terms-e-Documents.aspx>. Attention is drawn to the limitation of liability, indemnification and jurisdiction issues defined therein. Any holder of this document is advised that information contained hereon reflects the Company's findings at the time of its intervention only and within the limits of Client's instructions, if any. The Company's sole responsibility is to its Client and this document does not exonerate parties to a transaction from exercising all their rights and obligations under the transaction documents. This document cannot be reproduced except in full, without prior written approval of the Company. Any unauthorized alteration, forgery or falsification of the content or appearance of this document is unlawful and offenders may be prosecuted to the fullest extent of the law. Unless otherwise stated the results shown in this test report refer only to the sample(s) tested and such sample(s) are retained for 30 days only.

Attention: To check the authenticity of testing / inspection report & certificate, please contact us at telephone: (86-755) 8307 1443, or email: CN.Doccheck@sgs.com

SGS Bldg, No.4, Jianghao Industrial Park, No.430, Jihua Road, Bantian, Longgang District, Shenzhen, China 518129 t (86-755) 25328888 f (86-755) 83106190 www.sgs.com.cn
中国·深圳·龙岗区坂田吉华路 430 号江源工业园 4 栋 SGS 大楼 邮编: 518129 t (86-755) 25328888 f (86-755) 83106190 e sgs.china@sgs.com

Member of the SGS Group (SGS SA)

Test Report

No.: T52110270182TC

Date: JUN 22, 2021

Page 24 of 83

Part No	Part Description	Restricted Substances	Results of EDXRF(1)	Screening Result of PHTH(2)	Result of Wet Chemical Testing(3) (mg/kg)	Conclusion on EU RoHS	Resubmitted Date
058	White brush knit w/ orange printing (Bottom of music box)	Pb Cd Hg Cr(VI)▼ PBBs PBDEs DBP BBP DEHP DIBP	BL BL BL BL BL BL --- BL --- BL ---	--- --- --- --- --- --- BL BL BL BL	--- --- --- --- --- --- --- --- --- ---	Comply Comply Comply Comply Comply Comply Comply Comply Comply Comply	
059	White plastic shell (Music box)	Pb Cd Hg Cr(VI)▼ PBBs PBDEs DBP BBP DEHP DIBP	BL BL BL BL BL BL --- BL --- BL ---	--- --- --- --- --- --- BL BL BL BL	--- --- --- --- --- --- --- --- --- ---	Comply Comply Comply Comply Comply Comply Comply Comply Comply Comply	
060	Silvery metal small screw (On music box)	Pb Cd Hg Cr(VI)▼ PBBs PBDEs DBP BBP DEHP DIBP	BL BL BL IN -- -- --- --- --- ---	--- --- --- --- --- --- --- --- --- ---	--- --- --- ND --- --- --- --- --- ---	Comply Comply Comply Comply --- --- --- --- --- ---	



SGS CSTC (Shenzhen) Co., Ltd.
Shenzhen Branch Testing Center Hardlines

Unless otherwise agreed in writing, this document is issued by the Company subject to its General Conditions of Service printed overleaf, available on request or accessible at <http://www.sgs.com/en/Terms-and-Conditions.aspx> and, for electronic format documents, subject to Terms and Conditions for Electronic Documents at <http://www.sgs.com/en/Terms-and-Conditions/Terms-e-Document.aspx>. Attention is drawn to the limitation of liability, indemnification and jurisdiction issues defined therein. Any holder of this document is advised that information contained hereon reflects the Company's findings at the time of its intervention only and within the limits of Client's instructions, if any. The Company's sole responsibility is to its Client and this document does not exonerate parties to a transaction from exercising all their rights and obligations under the transaction documents. This document cannot be reproduced except in full, without prior written approval of the Company. Any unauthorized alteration, forgery or falsification of the content or appearance of this document is unlawful and offenders may be prosecuted to the fullest extent of the law. Unless otherwise stated the results shown in this test report refer only to the sample(s) tested and such sample(s) are retained for 30 days only.

Attention: To check the authenticity of testing / inspection report & certificate, please contact us at telephone: (86-755) 8307 1443, or email: CN.Doccheck@sgs.com

SGS Bldg, No.4, Jianghao Industrial Park, No.430, Jihua Road, Bantian, Longgang District, Shenzhen, China 518129 t (86-755) 25328888 f (86-755) 83106190 www.sgs.com.cn
中国·深圳·龙岗区坂田吉华路 430 号江源工业园 4 栋 SGS 大楼 邮编: 518129 t (86-755) 25328888 f (86-755) 83106190 e sgs.china@sgs.com

Member of the SGS Group (SGS SA)

Test Report

No.: T52110270182TC

Date: JUN 22, 2021

Page 25 of 83

Part No	Part Description	Restricted Substances	Results of EDXRF(1)	Screening Result of PHTH(2)	Result of Wet Chemical Testing(3) (mg/kg)	Conclusion on EU RoHS	Resubmitted Date
061	Silvery metal screw (Battery compartment) (Music box)	Pb Cd Hg Cr(VI)▼ PBBs PBDEs DBP BBP DEHP DIBP	BL BL BL IN -- -- --- --- --- ---	--- --- --- --- --- --- --- --- --- ---	--- --- --- ND --- --- --- --- --- ---	Comply Comply Comply Comply --- --- --- --- --- ---	
062	Black foam w/ double side glue (Battery compartment) (Music box)	Pb Cd Hg Cr(VI)▼ PBBs PBDEs DBP BBP DEHP DIBP	BL BL BL BL BL BL --- --- --- ---	--- --- --- --- --- --- BL BL BL BL	--- --- --- --- --- --- --- --- --- ---	Comply Comply Comply Comply Comply Comply Comply Comply Comply Comply	
063	Transparent plastic washer (Battery compartment) (Music box)	Pb Cd Hg Cr(VI)▼ PBBs PBDEs DBP BBP DEHP DIBP	BL BL BL BL BL BL --- --- --- ---	--- --- --- --- --- --- BL BL BL BL	--- --- --- --- --- --- --- --- --- ---	Comply Comply Comply Comply Comply Comply Comply Comply Comply Comply	



SGS-CSTC 检验检测专用章
Inspection & Testing Services
Shenzhen Branch Testing Center Hardlines

Unless otherwise agreed in writing, this document is issued by the Company subject to its General Conditions of Service printed overleaf, available on request or accessible at <http://www.sgs.com/en/Terms-and-Conditions.aspx> and, for electronic format documents, subject to Terms and Conditions for Electronic Documents at <http://www.sgs.com/en/Terms-and-Conditions/Terms-e-Documents.aspx>. Attention is drawn to the limitation of liability, indemnification and jurisdiction issues defined therein. Any holder of this document is advised that information contained hereon reflects the Company's findings at the time of its intervention only and within the limits of Client's instructions, if any. The Company's sole responsibility is to its Client and this document does not exonerate parties to a transaction from exercising all their rights and obligations under the transaction documents. This document cannot be reproduced except in full, without prior written approval of the Company. Any unauthorized alteration, forgery or falsification of the content or appearance of this document is unlawful and offenders may be prosecuted to the fullest extent of the law. Unless otherwise stated the results shown in this test report refer only to the sample(s) tested and such sample(s) are retained for 30 days only.

Attention: To check the authenticity of testing / inspection report & certificate, please contact us at telephone: (86-755) 8307 1443, or email: CN.Doccheck@sgs.com

SGS Bldg, No.4, Jianghao Industrial Park, No.430, Jihua Road, Bantian, Longgang District, Shenzhen, China 518129 t (86-755) 25328888 f (86-755) 83106190 www.sgs.com.cn
中国·深圳·龙岗区坂田吉华路 430 号江源工业园 4 栋 SGS 大楼 邮编: 518129 t (86-755) 25328888 f (86-755) 83106190 e sgs.china@sgs.com

Member of the SGS Group (SGS SA)

Test Report

No.: T52110270182TC

Date: JUN 22, 2021

Page 26 of 83

Part No	Part Description	Restricted Substances	Results of EDXRF(1)	Screening Result of PHTH(2)	Result of Wet Chemical Testing(3) (mg/kg)	Conclusion on EU RoHS	Resubmitted Date
064	Light blue plastic part (Music box)	Pb Cd Hg Cr(VI)▼ PBBs PBDEs DBP BBP DEHP DIBP	BL BL BL BL BL BL --- --- --- ---	--- --- --- --- --- --- BL BL BL BL	--- --- --- --- --- --- --- --- --- ---	Comply Comply Comply Comply Comply Comply Comply Comply Comply Comply	
065	Silvery metal shaft (In music box)	Pb Cd Hg Cr(VI)▼ PBBs PBDEs DBP BBP DEHP DIBP	BL BL BL BL -- -- --- --- --- ---	--- --- --- --- --- --- --- --- --- ---	--- --- --- --- --- --- --- --- --- ---	Comply Comply Comply Comply --- --- --- --- --- ---	
066	Silvery metal spring (Battery compartment) (Music box)	Pb Cd Hg Cr(VI)▼ PBBs PBDEs DBP BBP DEHP DIBP	BL BL BL BL -- -- --- --- --- ---	--- --- --- --- --- --- --- --- --- ---	--- --- --- --- --- --- --- --- --- ---	Comply Comply Comply Comply --- --- --- --- --- ---	



SGS CSTC (Shenzhen) Co., Ltd.
Shenzhen Branch Testing Center Hardlines

Unless otherwise agreed in writing, this document is issued by the Company subject to its General Conditions of Service printed overleaf, available on request or accessible at <http://www.sgs.com/en/Terms-and-Conditions.aspx> and, for electronic format documents, subject to Terms and Conditions for Electronic Documents at <http://www.sgs.com/en/Terms-and-Conditions/Terms-e-Documents.aspx>. Attention is drawn to the limitation of liability, indemnification and jurisdiction issues defined therein. Any holder of this document is advised that information contained hereon reflects the Company's findings at the time of its intervention only and within the limits of Client's instructions, if any. The Company's sole responsibility is to its Client and this document does not exonerate parties to a transaction from exercising all their rights and obligations under the transaction documents. This document cannot be reproduced except in full, without prior written approval of the Company. Any unauthorized alteration, forgery or falsification of the content or appearance of this document is unlawful and offenders may be prosecuted to the fullest extent of the law. Unless otherwise stated the results shown in this test report refer only to the sample(s) tested and such sample(s) are retained for 30 days only.

Attention: To check the authenticity of testing / inspection report & certificate, please contact us at telephone: (86-755) 8307 1443, or email: CN.Doccheck@sgs.com

SGS Bldg, No.4, Jianghao Industrial Park, No.430, Jihua Road, Bantian, Longgang District, Shenzhen, China 518129 t (86-755) 25328888 f (86-755) 83106190 www.sgs.com.cn
中国·深圳·龙岗区坂田吉华路 430 号江源工业园 4 栋 SGS 大楼 邮编: 518129 t (86-755) 25328888 f (86-755) 83106190 e sgs.china@sgs.com

Member of the SGS Group (SGS SA)

Test Report

No.: T52110270182TC

Date: JUN 22, 2021

Page 27 of 83

Part No	Part Description	Restricted Substances	Results of EDXRF(1)	Screening Result of PHTH(2)	Result of Wet Chemical Testing(3) (mg/kg)	Conclusion on EU RoHS	Resubmitted Date
067	Silvery metal sheet (Battery compartment) (Music box)	Pb Cd Hg Cr(VI)▼ PBBs PBDEs DBP BBP DEHP DIBP	BL BL BL BL -- -- --- --- --- ---	--- --- --- --- --- --- --- --- --- ---	--- --- --- --- --- --- --- --- --- ---	Comply Comply Comply Comply --- --- --- --- --- ---	
068	Silvery metal nut (Battery compartment) (Music box)	Pb Cd Hg Cr(VI)▼ PBBs PBDEs DBP BBP DEHP DIBP	BL BL BL IN -- -- --- --- --- ---	--- --- --- --- --- --- --- --- --- ---	--- --- --- ND --- --- --- --- --- ---	Comply Comply Comply Comply --- --- --- --- --- ---	
069	Silvery metal solder (Battery compartment) (Music box)	Pb Cd Hg Cr(VI)▼ PBBs PBDEs DBP BBP DEHP DIBP	BL BL BL BL -- -- --- --- --- ---	--- --- --- --- --- --- --- --- --- ---	--- --- --- --- --- --- --- --- --- ---	Comply Comply Comply Comply --- --- --- --- --- ---	



SGS CSTC (Shenzhen) Co., Ltd.
Shenzhen Branch Testing Center Hardlines

Unless otherwise agreed in writing, this document is issued by the Company subject to its General Conditions of Service printed overleaf, available on request or accessible at <http://www.sgs.com/en/Terms-and-Conditions.aspx> and, for electronic format documents, subject to Terms and Conditions for Electronic Documents at <http://www.sgs.com/en/Terms-and-Conditions/Terms-e-Documents.aspx>. Attention is drawn to the limitation of liability, indemnification and jurisdiction issues defined therein. Any holder of this document is advised that information contained hereon reflects the Company's findings at the time of its intervention only and within the limits of Client's instructions, if any. The Company's sole responsibility is to its Client and this document does not exonerate parties to a transaction from exercising all their rights and obligations under the transaction documents. This document cannot be reproduced except in full, without prior written approval of the Company. Any unauthorized alteration, forgery or falsification of the content or appearance of this document is unlawful and offenders may be prosecuted to the fullest extent of the law. Unless otherwise stated the results shown in this test report refer only to the sample(s) tested and such sample(s) are retained for 30 days only.

Attention: To check the authenticity of testing / inspection report & certificate, please contact us at telephone: (86-755) 8307 1443, or email: CN.Doccheck@sgs.com

SGS Bldg, No.4, Jianghao Industrial Park, No.430, Jihua Road, Bantian, Longgang District, Shenzhen, China 518129 t (86-755) 25328888 f (86-755) 83106190 www.sgs.com.cn
中国·深圳·龙岗区坂田吉华路 430 号江源工业园 4 栋 SGS 大楼 邮编: 518129 t (86-755) 25328888 f (86-755) 83106190 e sgs.china@sgs.com

Member of the SGS Group (SGS SA)

Test Report

No.: T52110270182TC

Date: JUN 22, 2021

Page 28 of 83

Part No	Part Description	Restricted Substances	Results of EDXRF(1)	Screening Result of PHTH(2)	Result of Wet Chemical Testing(3) (mg/kg)	Conclusion on EU RoHS	Resubmitted Date
070	Yellow dry glue (Music box)	Pb Cd Hg Cr(VI)▼ PBBs PBDEs DBP BBP DEHP DIBP	BL BL BL BL BL BL --- --- --- ---	--- --- --- --- --- --- --- --- --- ---	--- --- --- --- --- --- ND ND ND ND	Comply Comply Comply Comply Comply Comply Comply Comply Comply Comply	
071	Coppery metal core wire (Music box)	Pb Cd Hg Cr(VI)▼ PBBs PBDEs DBP BBP DEHP DIBP	BL BL BL BL -- -- --- --- --- ---	--- --- --- --- --- --- --- --- --- ---	--- --- --- --- --- --- --- --- --- ---	Comply Comply Comply Comply --- --- --- --- --- ---	
072	White plastic (Wire insulation) (Music box)	Pb Cd Hg Cr(VI)▼ PBBs PBDEs DBP BBP DEHP DIBP	BL BL BL BL BL BL --- --- --- ---	--- --- --- --- --- --- --- --- --- ---	--- --- --- --- --- --- ND ND ND ND	Comply Comply Comply Comply Comply Comply Comply Comply Comply Comply	



SGS-CSTC (Shenzhen) Co., Ltd.
Shenzhen Branch Testing Center Hardlines

Unless otherwise agreed in writing, this document is issued by the Company subject to its General Conditions of Service printed overleaf, available on request or accessible at <http://www.sgs.com/en/Terms-and-Conditions.aspx> and, for electronic format documents, subject to Terms and Conditions for Electronic Documents at <http://www.sgs.com/en/Terms-and-Conditions/Terms-e-Documents.aspx>. Attention is drawn to the limitation of liability, indemnification and jurisdiction issues defined therein. Any holder of this document is advised that information contained hereon reflects the Company's findings at the time of its intervention only and within the limits of Client's instructions, if any. The Company's sole responsibility is to its Client and this document does not exonerate parties to a transaction from exercising all their rights and obligations under the transaction documents. This document cannot be reproduced except in full, without prior written approval of the Company. Any unauthorized alteration, forgery or falsification of the content or appearance of this document is unlawful and offenders may be prosecuted to the fullest extent of the law. Unless otherwise stated the results shown in this test report refer only to the sample(s) tested and such sample(s) are retained for 30 days only.

Attention: To check the authenticity of testing / inspection report & certificate, please contact us at telephone: (86-755) 8307 1443, or email: CN.Doccheck@sgs.com

SGS Bldg, No.4, Jianghao Industrial Park, No.430, Jihua Road, Bantian, Longgang District, Shenzhen, China 518129 t (86-755) 25328888 f (86-755) 83106190 www.sgs.com.cn
中国·深圳·龙岗区坂田吉华路 430 号江源工业园 4 栋 SGS 大楼 邮编: 518129 t (86-755) 25328888 f (86-755) 83106190 e sgs.china@sgs.com

Member of the SGS Group (SGS SA)

Test Report

No.: T52110270182TC

Date: JUN 22, 2021

Page 29 of 83

Part No	Part Description	Restricted Substances	Results of EDXRF(1)	Screening Result of PHTH(2)	Result of Wet Chemical Testing(3) (mg/kg)	Conclusion on EU RoHS	Resubmitted Date
073	Transparent yellow dry glue (On PCB) (Music box)	Pb Cd Hg Cr(VI)▼ PBBs PBDEs DBP BBP DEHP DIBP	BL BL BL BL BL BL --- --- --- ---	--- --- --- --- --- --- --- --- --- ---	--- --- --- --- --- --- ND ND ND ND	Comply Comply Comply Comply Comply Comply Comply Comply Comply Comply	
074	Transparent LED body (Music box)	Pb Cd Hg Cr(VI)▼ PBBs PBDEs DBP BBP DEHP DIBP	BL BL BL BL IN IN --- --- --- ---	--- --- --- --- --- --- BL BL BL BL	--- --- --- --- ND ND --- --- --- ---	Comply Comply Comply Comply Comply Comply Comply Comply Comply Comply	
075	Silvery metal solder (On LED) (Music box)	Pb Cd Hg Cr(VI)▼ PBBs PBDEs DBP BBP DEHP DIBP	BL BL BL BL -- -- --- --- --- ---	--- --- --- --- --- --- --- --- --- ---	--- --- --- --- --- --- --- --- --- ---	Comply Comply Comply Comply --- --- --- --- --- ---	



SGS-CSTC (Shenzhen) Technical Services Co., Ltd.
Shenzhen Branch Testing Center Hardlines

Unless otherwise agreed in writing, this document is issued by the Company subject to its General Conditions of Service printed overleaf, available on request or accessible at <http://www.sgs.com/en/Terms-and-Conditions.aspx> and, for electronic format documents, subject to Terms and Conditions for Electronic Documents at <http://www.sgs.com/en/Terms-and-Conditions/Terms-e-Documents.aspx>. Attention is drawn to the limitation of liability, indemnification and jurisdiction issues defined therein. Any holder of this document is advised that information contained hereon reflects the Company's findings at the time of its intervention only and within the limits of Client's instructions, if any. The Company's sole responsibility is to its Client and this document does not exonerate parties to a transaction from exercising all their rights and obligations under the transaction documents. This document cannot be reproduced except in full, without prior written approval of the Company. Any unauthorized alteration, forgery or falsification of the content or appearance of this document is unlawful and offenders may be prosecuted to the fullest extent of the law. Unless otherwise stated the results shown in this test report refer only to the sample(s) tested and such sample(s) are retained for 30 days only.

Attention: To check the authenticity of testing / inspection report & certificate, please contact us at telephone:(86-755) 8307 1443, or email: CN.Doccheck@sgs.com

SGS Bldg, No.4, Jianghao Industrial Park, No.430, Jihua Road, Bantian, Longgang District, Shenzhen, China 518129 t (86-755) 25328888 f (86-755) 83106190 www.sgs.com.cn
中国·深圳·龙岗区坂田吉华路 430 号江源工业园 4 栋 SGS 大楼 邮编: 518129 t (86-755) 25328888 f (86-755) 83106190 e sgs.china@sgs.com

Member of the SGS Group (SGS SA)

Test Report

No.: T52110270182TC

Date: JUN 22, 2021

Page 30 of 83

Part No	Part Description	Restricted Substances	Results of EDXRF(1)	Screening Result of PHTH(2)	Result of Wet Chemical Testing(3) (mg/kg)	Conclusion on EU RoHS	Resubmitted Date
076	Orange plastic (Wire insulation of flat cable) (Music box)	Pb Cd Hg Cr(VI)▼ PBBs PBDEs DBP BBP DEHP DIBP	BL BL BL BL BL BL --- --- --- ---	--- --- --- --- --- --- --- --- --- ---	--- --- --- --- --- --- ND ND ND ND	Comply Comply Comply Comply Comply Comply Comply Comply Comply Comply	
077	Black plastic (Wire insulation of flat cable) (Music box)	Pb Cd Hg Cr(VI)▼ PBBs PBDEs DBP BBP DEHP DIBP	BL BL BL BL BL BL --- --- --- ---	--- --- --- --- --- --- --- --- --- ---	--- --- --- --- --- --- ND ND ND ND	Comply Comply Comply Comply Comply Comply Comply Comply Comply Comply	
078	Blue plastic (Wire insulation of flat cable) (Music box)	Pb Cd Hg Cr(VI)▼ PBBs PBDEs DBP BBP DEHP DIBP	BL BL BL BL BL BL --- --- --- ---	--- --- --- --- --- --- --- --- --- ---	--- --- --- --- --- --- ND ND ND ND	Comply Comply Comply Comply Comply Comply Comply Comply Comply Comply	



SGS-CSTC (Shenzhen) Co., Ltd.
Shenzhen Branch Testing Center Hardlines

Unless otherwise agreed in writing, this document is issued by the Company subject to its General Conditions of Service printed overleaf, available on request or accessible at <http://www.sgs.com/en/Terms-and-Conditions.aspx> and, for electronic format documents, subject to Terms and Conditions for Electronic Documents at <http://www.sgs.com/en/Terms-and-Conditions/Terms-e-Documents.aspx>. Attention is drawn to the limitation of liability, indemnification and jurisdiction issues defined therein. Any holder of this document is advised that information contained hereon reflects the Company's findings at the time of its intervention only and within the limits of Client's instructions, if any. The Company's sole responsibility is to its Client and this document does not exonerate parties to a transaction from exercising all their rights and obligations under the transaction documents. This document cannot be reproduced except in full, without prior written approval of the Company. Any unauthorized alteration, forgery or falsification of the content or appearance of this document is unlawful and offenders may be prosecuted to the fullest extent of the law. Unless otherwise stated the results shown in this test report refer only to the sample(s) tested and such sample(s) are retained for 30 days only.

Attention: To check the authenticity of testing / inspection report & certificate, please contact us at telephone: (86-755) 8307 1443, or email: CN.Doccheck@sgs.com

SGS Bldg, No.4, Jianghao Industrial Park, No.430, Jihua Road, Bantian, Longgang District, Shenzhen, China 518129 t (86-755) 25328888 f (86-755) 83106190 www.sgs.com.cn
中国·深圳·龙岗区坂田吉华路 430 号江源工业园 4 栋 SGS 大楼 邮编: 518129 t (86-755) 25328888 f (86-755) 83106190 e sgs.china@sgs.com

Member of the SGS Group (SGS SA)

Test Report

No.: T52110270182TC

Date: JUN 22, 2021

Page 31 of 83

Part No	Part Description	Restricted Substances	Results of EDXRF(1)	Screening Result of PHTH(2)	Result of Wet Chemical Testing(3) (mg/kg)	Conclusion on EU RoHS	Resubmitted Date
079	Green plastic (Wire insulation of flat cable) (Music box)	Pb Cd Hg Cr(VI)▼ PBBs PBDEs DBP BBP DEHP DIBP	BL BL BL BL BL BL --- --- --- ---	--- --- --- --- --- --- --- --- --- ---	--- --- --- --- --- --- ND ND ND ND	Comply Comply Comply Comply Comply Comply Comply Comply Comply Comply	
080	Black plastic (Wire insulation on PCB) (Music box)	Pb Cd Hg Cr(VI)▼ PBBs PBDEs DBP BBP DEHP DIBP	BL BL BL BL BL BL --- --- --- ---	--- --- --- --- --- --- --- --- --- ---	--- --- --- --- --- --- ND ND ND ND	Comply Comply Comply Comply Comply Comply Comply Comply Comply Comply	
081	Red plastic (Wire insulation on PCB) (Music box)	Pb Cd Hg Cr(VI)▼ PBBs PBDEs DBP BBP DEHP DIBP	BL BL BL BL BL BL --- --- --- ---	--- --- --- --- --- --- --- --- --- ---	--- --- --- --- --- --- ND ND ND ND	Comply Comply Comply Comply Comply Comply Comply Comply Comply Comply	



SGS-CSTC (Shenzhen) Technical Services Co., Ltd.
Shenzhen Branch Testing Center Hardlines

Unless otherwise agreed in writing, this document is issued by the Company subject to its General Conditions of Service printed overleaf, available on request or accessible at <http://www.sgs.com/en/Terms-and-Conditions.aspx> and, for electronic format documents, subject to Terms and Conditions for Electronic Documents at <http://www.sgs.com/en/Terms-and-Conditions/Terms-e-Document.aspx>. Attention is drawn to the limitation of liability, indemnification and jurisdiction issues defined therein. Any holder of this document is advised that information contained hereon reflects the Company's findings at the time of its intervention only and within the limits of Client's instructions, if any. The Company's sole responsibility is to its Client and this document does not exonerate parties to a transaction from exercising all their rights and obligations under the transaction documents. This document cannot be reproduced except in full, without prior written approval of the Company. Any unauthorized alteration, forgery or falsification of the content or appearance of this document is unlawful and offenders may be prosecuted to the fullest extent of the law. Unless otherwise stated the results shown in this test report refer only to the sample(s) tested and such sample(s) are retained for 30 days only.

Attention: To check the authenticity of testing / inspection report & certificate, please contact us at telephone: (86-755) 8307 1443, or email: CN.Doccheck@sgs.com

SGS Bldg, No.4, Jianghao Industrial Park, No.430, Jihua Road, Bantian, Longgang District, Shenzhen, China 518129 t (86-755) 25328888 f (86-755) 83106190 www.sgs.com.cn
中国·深圳·龙岗区坂田吉华路 430 号江源工业园 4 栋 SGS 大楼 邮编: 518129 t (86-755) 25328888 f (86-755) 83106190 e sgs.china@sgs.com

Member of the SGS Group (SGS SA)

Test Report

No.: T52110270182TC

Date: JUN 22, 2021

Page 32 of 83

Part No	Part Description	Restricted Substances	Results of EDXRF(1)	Screening Result of PHTH(2)	Result of Wet Chemical Testing(3) (mg/kg)	Conclusion on EU RoHS	Resubmitted Date
082	Green "PCB" (Music box)	Pb Cd Hg Cr(VI)▼ PBBs PBDEs DBP BBP DEHP DIBP	BL BL BL BL IN IN --- --- --- ---	--- --- --- --- --- --- BL BL BL BL	--- --- --- --- ND ND --- --- --- ---	Comply Comply Comply Comply Comply Comply Comply Comply Comply Comply	
083	Silvery metal solder (On PCB) (Music box)	Pb Cd Hg Cr(VI)▼ PBBs PBDEs DBP BBP DEHP DIBP	BL BL BL BL -- -- --- --- --- ---	--- --- --- --- --- --- --- --- --- ---	--- --- --- --- --- --- --- --- --- ---	Comply Comply Comply Comply --- --- --- --- --- ---	
084	Black material (On PCB) (Music box)	Pb Cd Hg Cr(VI)▼ PBBs PBDEs DBP BBP DEHP DIBP	BL BL BL BL BL BL --- --- --- ---	--- --- --- --- --- --- BL BL BL BL	--- --- --- --- --- --- --- --- --- ---	Comply Comply Comply Comply Comply Comply Comply Comply Comply Comply	



SGS-CSTC (Shenzhen) Technical Services Co., Ltd.
Shenzhen Branch Testing Center Hardlines

Unless otherwise agreed in writing, this document is issued by the Company subject to its General Conditions of Service printed overleaf, available on request or accessible at <http://www.sgs.com/en/Terms-and-Conditions.aspx> and, for electronic format documents, subject to Terms and Conditions for Electronic Documents at <http://www.sgs.com/en/Terms-and-Conditions/Terms-e-Documents.aspx>. Attention is drawn to the limitation of liability, indemnification and jurisdiction issues defined therein. Any holder of this document is advised that information contained hereon reflects the Company's findings at the time of its intervention only and within the limits of Client's instructions, if any. The Company's sole responsibility is to its Client and this document does not exonerate parties to a transaction from exercising all their rights and obligations under the transaction documents. This document cannot be reproduced except in full, without prior written approval of the Company. Any unauthorized alteration, forgery or falsification of the content or appearance of this document is unlawful and offenders may be prosecuted to the fullest extent of the law. Unless otherwise stated the results shown in this test report refer only to the sample(s) tested and such sample(s) are retained for 30 days only.

Attention: To check the authenticity of testing / inspection report & certificate, please contact us at telephone: (86-755) 8307 1443, or email: CN.Doccheck@sgs.com

SGS Bldg, No.4, Jianghao Industrial Park, No.430, Jihua Road, Bantian, Longgang District, Shenzhen, China 518129 t (86-755) 25328888 f (86-755) 83106190 www.sgs.com.cn
中国·深圳·龙岗区坂田吉华路 430 号江源工业园 4 栋 SGS 大楼 邮编: 518129 t (86-755) 25328888 f (86-755) 83106190 e sgs.china@sgs.com

Member of the SGS Group (SGS SA)

Test Report

No.: T52110270182TC

Date: JUN 22, 2021

Page 33 of 83

Part No	Part Description	Restricted Substances	Results of EDXRF(1)	Screening Result of PHTH(2)	Result of Wet Chemical Testing(3) (mg/kg)	Conclusion on EU RoHS	Resubmitted Date
085	Orange & black chip diode body (On PCB) (Music box)	Pb Cd Hg Cr(VI)▼ PBBs PBDEs DBP BBP DEHP DIBP	OL### BL BL BL BL BL --- --- --- ---	--- --- --- --- --- --- BL BL BL BL	--- --- --- --- --- --- --- --- --- ---	Comply Comply Comply Comply Comply Comply Comply Comply Comply Comply	
086	Silvery metal shell (Switch) (Music box)	Pb Cd Hg Cr(VI)▼ PBBs PBDEs DBP BBP DEHP DIBP	BL BL BL BL -- -- --- --- --- ---	--- --- --- --- --- --- --- --- --- ---	--- --- --- --- --- --- --- --- --- ---	Comply Comply Comply Comply --- --- --- --- --- ---	
087	Black plastic part (Switch) (Music box)	Pb Cd Hg Cr(VI)▼ PBBs PBDEs DBP BBP DEHP DIBP	BL BL BL BL BL BL --- --- --- ---	--- --- --- --- --- --- BL BL BL BL	--- --- --- --- --- --- --- --- --- ---	Comply Comply Comply Comply Comply Comply Comply Comply Comply Comply	



SGS-CSTC (Shenzhen) Co., Ltd.
Shenzhen Branch Testing Center Hardlines

Unless otherwise agreed in writing, this document is issued by the Company subject to its General Conditions of Service printed overleaf, available on request or accessible at <http://www.sgs.com/en/Terms-and-Conditions.aspx> and, for electronic format documents, subject to Terms and Conditions for Electronic Documents at <http://www.sgs.com/en/Terms-and-Conditions/Terms-e-Documents.aspx>. Attention is drawn to the limitation of liability, indemnification and jurisdiction issues defined therein. Any holder of this document is advised that information contained hereon reflects the Company's findings at the time of its intervention only and within the limits of Client's instructions, if any. The Company's sole responsibility is to its Client and this document does not exonerate parties to a transaction from exercising all their rights and obligations under the transaction documents. This document cannot be reproduced except in full, without prior written approval of the Company. Any unauthorized alteration, forgery or falsification of the content or appearance of this document is unlawful and offenders may be prosecuted to the fullest extent of the law. Unless otherwise stated the results shown in this test report refer only to the sample(s) tested and such sample(s) are retained for 30 days only.

Attention: To check the authenticity of testing / inspection report & certificate, please contact us at telephone: (86-755) 8307 1443, or email: CN.Doccheck@sgs.com

SGS Bldg, No.4, Jianghao Industrial Park, No.430, Jihua Road, Bantian, Longgang District, Shenzhen, China 518129 t (86-755) 25328888 f (86-755) 83106190 www.sgs.com.cn
中国·深圳·龙岗区坂田吉华路 430 号江源工业园 4 栋 SGS 大楼 邮编: 518129 t (86-755) 25328888 f (86-755) 83106190 e sgs.china@sgs.com

Member of the SGS Group (SGS SA)

Test Report

No.: T52110270182TC

Date: JUN 22, 2021

Page 34 of 83

Part No	Part Description	Restricted Substances	Results of EDXRF(1)	Screening Result of PHTH(2)	Result of Wet Chemical Testing(3) (mg/kg)	Conclusion on EU RoHS	Resubmitted Date
088	Silvery metal bead (Switch) (Music box)	Pb Cd Hg Cr(VI)▼ PBBs PBDEs DBP BBP DEHP DIBP	BL BL BL BL -- -- --- --- --- ---	--- --- --- --- --- --- --- --- --- ---	--- --- --- --- --- --- --- --- --- ---	Comply Comply Comply Comply --- --- --- --- --- ---	
089	Silvery metal spring (Switch) (Music box)	Pb Cd Hg Cr(VI)▼ PBBs PBDEs DBP BBP DEHP DIBP	BL BL BL BL -- -- --- --- --- ---	--- --- --- --- --- --- --- --- --- ---	--- --- --- --- --- --- --- --- --- ---	Comply Comply Comply Comply --- --- --- --- --- ---	
090	Silvery metal "U" shaped part (Switch) (Music box)	Pb Cd Hg Cr(VI)▼ PBBs PBDEs DBP BBP DEHP DIBP	BL BL BL BL -- -- --- --- --- ---	--- --- --- --- --- --- --- --- --- ---	--- --- --- --- --- --- --- --- --- ---	Comply Comply Comply Comply --- --- --- --- --- ---	



SGS CSTC (Shenzhen) Co., Ltd.
Shenzhen Branch Testing Center Hardlines

Unless otherwise agreed in writing, this document is issued by the Company subject to its General Conditions of Service printed overleaf, available on request or accessible at <http://www.sgs.com/en/Terms-and-Conditions.aspx> and, for electronic format documents, subject to Terms and Conditions for Electronic Documents at <http://www.sgs.com/en/Terms-and-Conditions/Terms-e-Documents.aspx>. Attention is drawn to the limitation of liability, indemnification and jurisdiction issues defined therein. Any holder of this document is advised that information contained hereon reflects the Company's findings at the time of its intervention only and within the limits of Client's instructions, if any. The Company's sole responsibility is to its Client and this document does not exonerate parties to a transaction from exercising all their rights and obligations under the transaction documents. This document cannot be reproduced except in full, without prior written approval of the Company. Any unauthorized alteration, forgery or falsification of the content or appearance of this document is unlawful and offenders may be prosecuted to the fullest extent of the law. Unless otherwise stated the results shown in this test report refer only to the sample(s) tested and such sample(s) are retained for 30 days only.

Attention: To check the authenticity of testing / inspection report & certificate, please contact us at telephone: (86-755) 8307 1443, or email: CN.Doccheck@sgs.com

SGS Bldg, No.4, Jianghao Industrial Park, No.430, Jihua Road, Bantian, Longgang District, Shenzhen, China 518129 t (86-755) 25328888 f (86-755) 83106190 www.sgs.com.cn
中国·深圳·龙岗区坂田吉华路 430 号江源工业园 4 栋 SGS 大楼 邮编: 518129 t (86-755) 25328888 f (86-755) 83106190 e sgs.china@sgs.com

Member of the SGS Group (SGS SA)

Test Report

No.: T52110270182TC

Date: JUN 22, 2021

Page 35 of 83

Part No	Part Description	Restricted Substances	Results of EDXRF(1)	Screening Result of PHTH(2)	Result of Wet Chemical Testing(3) (mg/kg)	Conclusion on EU RoHS	Resubmitted Date
091	Beige hardboard (Switch) (Music box)	Pb Cd Hg Cr(VI)▼ PBBs PBDEs DBP BBP DEHP DIBP	BL BL BL BL BL BL --- --- --- ---	--- --- --- --- --- --- BL BL BL BL	--- --- --- --- --- --- --- --- --- ---	Comply Comply Comply Comply Comply Comply Comply Comply Comply Comply	
092	Silvery metal pin (Switch) (Music box)	Pb Cd Hg Cr(VI)▼ PBBs PBDEs DBP BBP DEHP DIBP	BL BL BL BL -- -- --- --- --- ---	--- --- --- --- --- --- --- --- --- ---	--- --- --- --- --- --- --- --- --- ---	Comply Comply Comply Comply --- --- --- --- --- ---	
093	Black plastic sheet w/ white printing (Spring switch) (Music box)	Pb Cd Hg Cr(VI)▼ PBBs PBDEs DBP BBP DEHP DIBP	BL BL BL BL BL BL --- --- --- ---	--- --- --- --- --- --- BL BL BL BL	--- --- --- --- --- --- --- --- --- ---	Comply Comply Comply Comply Comply Comply Comply Comply Comply Comply	



SGS CSTC (Shenzhen) Co., Ltd.
Shenzhen Branch Testing Center Hardlines

Unless otherwise agreed in writing, this document is issued by the Company subject to its General Conditions of Service printed overleaf, available on request or accessible at <http://www.sgs.com/en/Terms-and-Conditions.aspx> and, for electronic format documents, subject to Terms and Conditions for Electronic Documents at <http://www.sgs.com/en/Terms-and-Conditions/Terms-e-Document.aspx>. Attention is drawn to the limitation of liability, indemnification and jurisdiction issues defined therein. Any holder of this document is advised that information contained hereon reflects the Company's findings at the time of its intervention only and within the limits of Client's instructions, if any. The Company's sole responsibility is to its Client and this document does not exonerate parties to a transaction from exercising all their rights and obligations under the transaction documents. This document cannot be reproduced except in full, without prior written approval of the Company. Any unauthorized alteration, forgery or falsification of the content or appearance of this document is unlawful and offenders may be prosecuted to the fullest extent of the law. Unless otherwise stated the results shown in this test report refer only to the sample(s) tested and such sample(s) are retained for 30 days only.

Attention: To check the authenticity of testing / inspection report & certificate, please contact us at telephone: (86-755) 8307 1443, or email: CN.Doccheck@sgs.com

SGS Bldg, No.4, Jianghao Industrial Park, No.430, Jihua Road, Bantian, Longgang District, Shenzhen, China 518129 t (86-755) 25328888 f (86-755) 83106190 www.sgs.com
中国·深圳·龙岗区坂田吉华路 430 号江源工业园 4 栋 SGS 大楼 邮编: 518129 t (86-755) 25328888 f (86-755) 83106190 e.sgs.china@sgs.com

Member of the SGS Group (SGS SA)

Test Report

No.: T52110270182TC

Date: JUN 22, 2021

Page 36 of 83

Part No	Part Description	Restricted Substances	Results of EDXRF(1)	Screening Result of PHTH(2)	Result of Wet Chemical Testing(3) (mg/kg)	Conclusion on EU RoHS	Resubmitted Date
094	Blue plastic part (Spring Switch) (Music box)	Pb Cd Hg Cr(VI)▼ PBBs PBDEs DBP BBP DEHP DIBP	BL BL BL BL BL BL --- BL --- BL ---	--- --- --- --- --- --- BL BL BL BL	--- --- --- --- --- --- --- --- --- ---	Comply Comply Comply Comply Comply Comply Comply Comply Comply Comply	
095	Black dry glue (Spring switch) (Music box)	Pb Cd Hg Cr(VI)▼ PBBs PBDEs DBP BBP DEHP DIBP	BL BL BL BL BL BL --- --- --- ---	--- --- --- --- --- --- --- --- --- ---	--- --- --- --- --- --- ND ND ND ND	Comply Comply Comply Comply Comply Comply Comply Comply Comply Comply	11 Jun 2021
096	Silvery metal pin (Spring switch) (Music box)	Pb Cd Hg Cr(VI)▼ PBBs PBDEs DBP BBP DEHP DIBP	BL BL BL BL -- -- --- --- --- ---	--- --- --- --- --- --- --- --- --- ---	--- --- --- --- --- --- --- --- --- ---	Comply Comply Comply Comply --- --- --- --- --- ---	



SGS-CSTC (Shenzhen) Technical Services Co., Ltd.
Shenzhen Branch Testing Center Hardlines

Unless otherwise agreed in writing, this document is issued by the Company subject to its General Conditions of Service printed overleaf, available on request or accessible at <http://www.sgs.com/en/Terms-and-Conditions.aspx> and, for electronic format documents, subject to Terms and Conditions for Electronic Documents at <http://www.sgs.com/en/Terms-and-Conditions/Terms-e-Documents.aspx>. Attention is drawn to the limitation of liability, indemnification and jurisdiction issues defined therein. Any holder of this document is advised that information contained hereon reflects the Company's findings at the time of its intervention only and within the limits of Client's instructions, if any. The Company's sole responsibility is to its Client and this document does not exonerate parties to a transaction from exercising all their rights and obligations under the transaction documents. This document cannot be reproduced except in full, without prior written approval of the Company. Any unauthorized alteration, forgery or falsification of the content or appearance of this document is unlawful and offenders may be prosecuted to the fullest extent of the law. Unless otherwise stated the results shown in this test report refer only to the sample(s) tested and such sample(s) are retained for 30 days only.

Attention: To check the authenticity of testing / inspection report & certificate, please contact us at telephone:(86-755) 8307 1443, or email: CN.Doccheck@sgs.com

SGS Bldg, No.4, Jianghao Industrial Park, No.430, Jihua Road, Bantian, Longgang District, Shenzhen, China 518129 t (86-755) 25328888 f (86-755) 83106190 www.sgs.com.cn
中国·深圳·龙岗区坂田吉华路 430 号江源工业园 4 栋 SGS 大楼 邮编: 518129 t (86-755) 25328888 f (86-755) 83106190 e sgs.china@sgs.com

Member of the SGS Group (SGS SA)

Test Report

No.: T52110270182TC

Date: JUN 22, 2021

Page 37 of 83

Part No	Part Description	Restricted Substances	Results of EDXRF(1)	Screening Result of PHTH(2)	Result of Wet Chemical Testing(3) (mg/kg)	Conclusion on EU RoHS	Resubmitted Date
097	Coppery metal spring (Spring switch) (Music box)	Pb Cd Hg Cr(VI)▼ PBBs PBDEs DBP BBP DEHP DIBP	BL BL BL BL -- -- --- --- --- ---	--- --- --- --- --- --- --- --- --- ---	--- --- --- --- --- --- --- --- --- ---	Comply Comply Comply Comply --- --- --- --- --- ---	
098	Yellow plastic (Wire insulation on speaker) (Music box)	Pb Cd Hg Cr(VI)▼ PBBs PBDEs DBP BBP DEHP DIBP	BL BL BL BL BL BL --- --- --- ---	--- --- --- --- --- --- --- --- --- ---	--- --- --- --- --- --- ND ND ND ND	Comply Comply Comply Comply Comply Comply Comply Comply Comply Comply	
099	Silvery metal frame (Speaker) (Music box)	Pb Cd Hg Cr(VI)▼ PBBs PBDEs DBP BBP DEHP DIBP	BL BL BL IN -- -- --- --- --- ---	--- --- --- --- --- --- --- --- --- ---	--- --- --- ND --- --- --- --- --- ---	Comply Comply Comply Comply --- --- --- --- --- ---	



SGS CSTC (Shenzhen) Co., Ltd.
Shenzhen Branch Testing Center Hardlines

Unless otherwise agreed in writing, this document is issued by the Company subject to its General Conditions of Service printed overleaf, available on request or accessible at <http://www.sgs.com/en/Terms-and-Conditions.aspx> and, for electronic format documents, subject to Terms and Conditions for Electronic Documents at <http://www.sgs.com/en/Terms-and-Conditions/Terms-e-Documents.aspx>. Attention is drawn to the limitation of liability, indemnification and jurisdiction issues defined therein. Any holder of this document is advised that information contained hereon reflects the Company's findings at the time of its intervention only and within the limits of Client's instructions, if any. The Company's sole responsibility is to its Client and this document does not exonerate parties to a transaction from exercising all their rights and obligations under the transaction documents. This document cannot be reproduced except in full, without prior written approval of the Company. Any unauthorized alteration, forgery or falsification of the content or appearance of this document is unlawful and offenders may be prosecuted to the fullest extent of the law. Unless otherwise stated the results shown in this test report refer only to the sample(s) tested and such sample(s) are retained for 30 days only.

Attention: To check the authenticity of testing / inspection report & certificate, please contact us at telephone: (86-755) 8307 1443, or email: CN.Doccheck@sgs.com

SGS Bldg, No.4, Jianghao Industrial Park, No.430, Jihua Road, Bantian, Longgang District, Shenzhen, China 518129 t (86-755) 25328888 f (86-755) 83106190 www.sgs.com.cn
中国·深圳·龙岗区坂田吉华路 430 号江源工业园 4 栋 SGS 大楼 邮编: 518129 t (86-755) 25328888 f (86-755) 83106190 e sgs.china@sgs.com

Member of the SGS Group (SGS SA)

Test Report

No.: T52110270182TC

Date: JUN 22, 2021

Page 38 of 83

Part No	Part Description	Restricted Substances	Results of EDXRF(1)	Screening Result of PHTH(2)	Result of Wet Chemical Testing(3) (mg/kg)	Conclusion on EU RoHS	Resubmitted Date
100	Silvery metal solder (Speaker) (Music box)	Pb Cd Hg Cr(VI)▼ PBBs PBDEs DBP BBP DEHP DIBP	BL BL BL BL -- -- --- --- --- ---	--- --- --- --- --- --- --- --- --- ---	--- --- --- --- --- --- --- --- --- ---	Comply Comply Comply Comply --- --- --- --- --- ---	
101	Beige hardboard w/ green surface (Speaker) (Music box)	Pb Cd Hg Cr(VI)▼ PBBs PBDEs DBP BBP DEHP DIBP	BL BL BL BL IN IN --- --- --- ---	--- --- --- --- --- --- BL BL BL BL	--- --- --- --- ND ND --- --- --- ---	Comply Comply Comply Comply Comply Comply Comply Comply Comply Comply	
102	Black plastic ring (Speaker) (Music box)	Pb Cd Hg Cr(VI)▼ PBBs PBDEs DBP BBP DEHP DIBP	BL BL BL BL BL BL --- --- --- ---	--- --- --- --- --- --- --- --- --- ---	--- --- --- --- --- --- ND ND ND ND	Comply Comply Comply Comply Comply Comply Comply Comply Comply Comply	



SGS-CSTC 检验检测专用章
Inspection & Testing Services
Shenzhen Branch Testing Center Hardlines

Unless otherwise agreed in writing, this document is issued by the Company subject to its General Conditions of Service printed overleaf, available on request or accessible at <http://www.sgs.com/en/Terms-and-Conditions.aspx> and, for electronic format documents, subject to Terms and Conditions for Electronic Documents at <http://www.sgs.com/en/Terms-and-Conditions/Terms-e-Documents.aspx>. Attention is drawn to the limitation of liability, indemnification and jurisdiction issues defined therein. Any holder of this document is advised that information contained hereon reflects the Company's findings at the time of its intervention only and within the limits of Client's instructions, if any. The Company's sole responsibility is to its Client and this document does not exonerate parties to a transaction from exercising all their rights and obligations under the transaction documents. This document cannot be reproduced except in full, without prior written approval of the Company. Any unauthorized alteration, forgery or falsification of the content or appearance of this document is unlawful and offenders may be prosecuted to the fullest extent of the law. Unless otherwise stated the results shown in this test report refer only to the sample(s) tested and such sample(s) are retained for 30 days only.

Attention: To check the authenticity of testing / inspection report & certificate, please contact us at telephone: (86-755) 8307 1443, or email: CN.Doccheck@sgs.com

SGS Bldg, No.4, Jianghao Industrial Park, No.430, Jihua Road, Bantian, Longgang District, Shenzhen, China 518129 t (86-755) 25328888 f (86-755) 83106190 www.sgs.com.cn
中国·深圳·龙岗区坂田吉华路 430 号江源工业园 4 栋 SGS 大楼 邮编: 518129 t (86-755) 25328888 f (86-755) 83106190 e sgs.china@sgs.com

Member of the SGS Group (SGS SA)

Test Report

No.: T52110270182TC

Date: JUN 22, 2021

Page 39 of 83

Part No	Part Description	Restricted Substances	Results of EDXRF(1)	Screening Result of PHTH(2)	Result of Wet Chemical Testing(3) (mg/kg)	Conclusion on EU RoHS	Resubmitted Date
103	Black plastic sheet (Speaker) (Music box)	Pb Cd Hg Cr(VI)▼ PBBs PBDEs DBP BBP DEHP DIBP	BL BL BL BL BL BL --- --- --- ---	--- --- --- --- --- --- BL BL BL BL	--- --- --- --- --- --- --- --- --- ---	Comply Comply Comply Comply Comply Comply Comply Comply Comply Comply	
104	Coppery enameled wire (Speaker) (Music box)	Pb Cd Hg Cr(VI)▼ PBBs PBDEs DBP BBP DEHP DIBP	BL BL BL BL BL BL --- --- --- ---	--- --- --- --- --- --- BL BL BL BL	--- --- --- --- --- --- --- --- --- ---	Comply Comply Comply Comply Comply Comply Comply Comply Comply Comply	
105	Silvery magnet (Speaker) (Music box)	Pb Cd Hg Cr(VI)▼ PBBs PBDEs DBP BBP DEHP DIBP	BL BL BL BL BL BL --- --- --- ---	--- --- --- --- --- --- --- --- --- ---	--- --- --- --- --- --- --- --- --- ---	Comply Comply Comply Comply Comply Comply --- --- --- ---	



SGS-CSTC (Shenzhen) Co., Ltd.
Shenzhen Branch Testing Center Hardlines

Unless otherwise agreed in writing, this document is issued by the Company subject to its General Conditions of Service printed overleaf, available on request or accessible at <http://www.sgs.com/en/Terms-and-Conditions.aspx> and, for electronic format documents, subject to Terms and Conditions for Electronic Documents at <http://www.sgs.com/en/Terms-and-Conditions/Terms-e-Documents.aspx>. Attention is drawn to the limitation of liability, indemnification and jurisdiction issues defined therein. Any holder of this document is advised that information contained hereon reflects the Company's findings at the time of its intervention only and within the limits of Client's instructions, if any. The Company's sole responsibility is to its Client and this document does not exonerate parties to a transaction from exercising all their rights and obligations under the transaction documents. This document cannot be reproduced except in full, without prior written approval of the Company. Any unauthorized alteration, forgery or falsification of the content or appearance of this document is unlawful and offenders may be prosecuted to the fullest extent of the law. Unless otherwise stated the results shown in this test report refer only to the sample(s) tested and such sample(s) are retained for 30 days only.

Attention: To check the authenticity of testing / inspection report & certificate, please contact us at telephone: (86-755) 8307 1443, or email: CN.Doccheck@sgs.com

SGS Bldg, No.4, Jianghao Industrial Park, No.430, Jihua Road, Bantian, Longgang District, Shenzhen, China 518129 t (86-755) 25328888 f (86-755) 83106190 www.sgs.com.cn
中国·深圳·龙岗区坂田吉华路 430 号江源工业园 4 栋 SGS 大楼 邮编: 518129 t (86-755) 25328888 f (86-755) 83106190 e sgs.china@sgs.com

Member of the SGS Group (SGS SA)

Test Report

No.: T52110270182TC

Date: JUN 22, 2021

Page 40 of 83

Part No	Part Description	Restricted Substances	Results of EDXRF(1)	Screening Result of PHTH(2)	Result of Wet Chemical Testing(3) (mg/kg)	Conclusion on EU RoHS	Resubmitted Date
106	Silvery metal sheet (Speaker) (Music box)	Pb Cd Hg Cr(VI)▼ PBBs PBDEs DBP BBP DEHP DIBP	BL BL BL IN -- -- --- --- --- ---	--- --- --- --- --- --- --- --- --- ---	--- --- --- ND --- --- --- --- --- ---	Comply Comply Comply Comply --- --- --- --- --- ---	
107	White plastic part (Motor box) (Music box)	Pb Cd Hg Cr(VI)▼ PBBs PBDEs DBP BBP DEHP DIBP	BL BL BL BL BL BL --- --- --- ---	--- --- --- --- --- --- BL BL BL BL	--- --- --- --- --- --- --- --- --- ---	Comply Comply Comply Comply Comply Comply Comply Comply Comply Comply	
108	Silvery metal screw (On motor box) (Music box)	Pb Cd Hg Cr(VI)▼ PBBs PBDEs DBP BBP DEHP DIBP	BL BL BL BL -- -- --- --- --- ---	--- --- --- --- --- --- --- --- --- ---	--- --- --- --- --- --- --- --- --- ---	Comply Comply Comply Comply --- --- --- --- --- ---	



SGS-CSTC 检验检测专用章
Inspection & Testing Services
Shenzhen Branch Testing Center Hardlines

Unless otherwise agreed in writing, this document is issued by the Company subject to its General Conditions of Service printed overleaf, available on request or accessible at <http://www.sgs.com/en/Terms-and-Conditions.aspx> and, for electronic format documents, subject to Terms and Conditions for Electronic Documents at <http://www.sgs.com/en/Terms-and-Conditions/Terms-e-Documents.aspx>. Attention is drawn to the limitation of liability, indemnification and jurisdiction issues defined therein. Any holder of this document is advised that information contained hereon reflects the Company's findings at the time of its intervention only and within the limits of Client's instructions, if any. The Company's sole responsibility is to its Client and this document does not exonerate parties to a transaction from exercising all their rights and obligations under the transaction documents. This document cannot be reproduced except in full, without prior written approval of the Company. Any unauthorized alteration, forgery or falsification of the content or appearance of this document is unlawful and offenders may be prosecuted to the fullest extent of the law. Unless otherwise stated the results shown in this test report refer only to the sample(s) tested and such sample(s) are retained for 30 days only.

Attention: To check the authenticity of testing / inspection report & certificate, please contact us at telephone:(86-755) 8307 1443, or email: CN.Doccheck@sgs.com

SGS Bldg, No.4, Jianghao Industrial Park, No.430, Jihua Road, Bantian, Longgang District, Shenzhen, China 518129 t (86-755) 25328888 f (86-755) 83106190 www.sgs.com.cn
中国·深圳·龙岗区坂田吉华路 430 号江源工业园 4 栋 SGS 大楼 邮编: 518129 t (86-755) 25328888 f (86-755) 83106190 e sgs.china@sgs.com

Member of the SGS Group (SGS SA)

Test Report

No.: T52110270182TC

Date: JUN 22, 2021

Page 41 of 83

Part No	Part Description	Restricted Substances	Results of EDXRF(1)	Screening Result of PHTH(2)	Result of Wet Chemical Testing(3) (mg/kg)	Conclusion on EU RoHS	Resubmitted Date
109	Silvery metal sheet (In motor box) (Music box)	Pb Cd Hg Cr(VI)▼ PBBs PBDEs DBP BBP DEHP DIBP	BL BL BL BL -- -- --- --- --- ---	--- --- --- --- --- --- --- --- --- ---	--- --- --- --- --- --- --- --- --- ---	Comply Comply Comply Comply --- --- --- --- --- ---	
110	Dull white plastic gear (In motor box) (Music box)	Pb Cd Hg Cr(VI)▼ PBBs PBDEs DBP BBP DEHP DIBP	BL BL BL BL BL BL --- --- --- ---	--- --- --- --- --- --- BL BL BL BL	--- --- --- --- --- --- --- --- --- ---	Comply Comply Comply Comply Comply Comply Comply Comply Comply Comply	
111	Bright white plastic gear (In motor box) (Music box)	Pb Cd Hg Cr(VI)▼ PBBs PBDEs DBP BBP DEHP DIBP	BL BL BL BL BL BL --- --- --- ---	--- --- --- --- --- --- BL BL BL BL	--- --- --- --- --- --- --- --- --- ---	Comply Comply Comply Comply Comply Comply Comply Comply Comply Comply	



SGS-CSTC 检验检测专用章
Inspection & Testing Services
Shenzhen Branch Testing Center Hardlines

Unless otherwise agreed in writing, this document is issued by the Company subject to its General Conditions of Service printed overleaf, available on request or accessible at <http://www.sgs.com/en/Terms-and-Conditions.aspx> and, for electronic format documents, subject to Terms and Conditions for Electronic Documents at <http://www.sgs.com/en/Terms-and-Conditions/Terms-e-Documents.aspx>. Attention is drawn to the limitation of liability, indemnification and jurisdiction issues defined therein. Any holder of this document is advised that information contained hereon reflects the Company's findings at the time of its intervention only and within the limits of Client's instructions, if any. The Company's sole responsibility is to its Client and this document does not exonerate parties to a transaction from exercising all their rights and obligations under the transaction documents. This document cannot be reproduced except in full, without prior written approval of the Company. Any unauthorized alteration, forgery or falsification of the content or appearance of this document is unlawful and offenders may be prosecuted to the fullest extent of the law. Unless otherwise stated the results shown in this test report refer only to the sample(s) tested and such sample(s) are retained for 30 days only.

Attention: To check the authenticity of testing / inspection report & certificate, please contact us at telephone: (86-755) 8307 1443, or email: CN.Doccheck@sgs.com

SGS Bldg, No.4, Jianghao Industrial Park, No.430, Jihua Road, Bantian, Longgang District, Shenzhen, China 518129 t (86-755) 25328888 f (86-755) 83106190 www.sgs.com.cn
中国·深圳·龙岗区坂田吉华路 430 号江源工业园 4 栋 SGS 大楼 邮编: 518129 t (86-755) 25328888 f (86-755) 83106190 e sgs.china@sgs.com

Member of the SGS Group (SGS SA)

Test Report

No.: T52110270182TC

Date: JUN 22, 2021

Page 42 of 83

Part No	Part Description	Restricted Substances	Results of EDXRF(1)	Screening Result of PHTH(2)	Result of Wet Chemical Testing(3) (mg/kg)	Conclusion on EU RoHS	Resubmitted Date
112	Silvery metal shaft (In motor box) (Music box)	Pb Cd Hg Cr(VI)▼ PBBs PBDEs DBP BBP DEHP DIBP	BL BL BL BL -- -- --- --- --- ---	--- --- --- --- --- --- --- --- --- ---	--- --- --- --- --- --- --- --- --- ---	Comply Comply Comply Comply --- --- --- --- --- ---	
113	Silvery metal screw (On motor) (Music box)	Pb Cd Hg Cr(VI)▼ PBBs PBDEs DBP BBP DEHP DIBP	BL BL BL IN -- -- --- --- --- ---	--- --- --- --- --- --- --- --- --- ---	--- --- --- ND --- --- --- --- --- ---	Comply Comply Comply Comply --- --- --- --- --- ---	
114	Silvery metal shell (Motor) (Music box)	Pb Cd Hg Cr(VI)▼ PBBs PBDEs DBP BBP DEHP DIBP	BL BL BL BL -- -- --- --- --- ---	--- --- --- --- --- --- --- --- --- ---	--- --- --- --- --- --- --- --- --- ---	Comply Comply Comply Comply --- --- --- --- --- ---	



SGS-CSTC 检验检测专用章
Inspection & Testing Services
Shenzhen Branch Testing Center Hardlines

Unless otherwise agreed in writing, this document is issued by the Company subject to its General Conditions of Service printed overleaf, available on request or accessible at <http://www.sgs.com/en/Terms-and-Conditions.aspx> and, for electronic format documents, subject to Terms and Conditions for Electronic Documents at <http://www.sgs.com/en/Terms-and-Conditions/Terms-e-Documents.aspx>. Attention is drawn to the limitation of liability, indemnification and jurisdiction issues defined therein. Any holder of this document is advised that information contained hereon reflects the Company's findings at the time of its intervention only and within the limits of Client's instructions, if any. The Company's sole responsibility is to its Client and this document does not exonerate parties to a transaction from exercising all their rights and obligations under the transaction documents. This document cannot be reproduced except in full, without prior written approval of the Company. Any unauthorized alteration, forgery or falsification of the content or appearance of this document is unlawful and offenders may be prosecuted to the fullest extent of the law. Unless otherwise stated the results shown in this test report refer only to the sample(s) tested and such sample(s) are retained for 30 days only.

Attention: To check the authenticity of testing / inspection report & certificate, please contact us at telephone:(86-755) 8307 1443, or email: CN.Doccheck@sgs.com

SGS Bldg, No.4, Jianghao Industrial Park, No.430, Jihua Road, Bantian, Longgang District, Shenzhen, China 518129 t (86-755) 25328888 f (86-755) 83106190 www.sgs.com.cn
中国·深圳·龙岗区坂田吉华路 430 号江源工业园 4 栋 SGS 大楼 邮编: 518129 t (86-755) 25328888 f (86-755) 83106190 e sgs.china@sgs.com

Member of the SGS Group (SGS SA)

Test Report

No.: T52110270182TC

Date: JUN 22, 2021

Page 43 of 83

Part No	Part Description	Restricted Substances	Results of EDXRF(1)	Screening Result of PHTH(2)	Result of Wet Chemical Testing(3) (mg/kg)	Conclusion on EU RoHS	Resubmitted Date
115	Black soft magnet (Motor) (Music box)	Pb Cd Hg Cr(VI)▼ PBBs PBDEs DBP BBP DEHP DIBP	BL BL BL BL BL BL --- BL --- BL ---	--- --- --- --- --- --- BL BL BL BL	--- --- --- --- --- --- --- --- --- ---	Comply Comply Comply Comply Comply Comply Comply Comply Comply Comply	
116	Coppery metal washer (Motor) (Music box)	Pb Cd Hg Cr(VI)▼ PBBs PBDEs DBP BBP DEHP DIBP	BL BL BL BL -- -- --- --- --- ---	--- --- --- --- --- --- --- --- --- ---	--- --- --- --- --- --- --- --- --- ---	Comply Comply Comply Comply --- --- --- --- --- ---	
117	Silvery metal shaft (Motor) (Music box)	Pb Cd Hg Cr(VI)▼ PBBs PBDEs DBP BBP DEHP DIBP	BL BL BL IN -- -- --- --- --- ---	--- --- --- --- --- --- --- --- --- ---	--- --- --- ND --- --- --- --- --- ---	Comply Comply Comply Comply --- --- --- --- --- ---	



SGS-CSTC (Shenzhen) Technical Services Co., Ltd.
Shenzhen Branch Testing Center Hardlines

Unless otherwise agreed in writing, this document is issued by the Company subject to its General Conditions of Service printed overleaf, available on request or accessible at <http://www.sgs.com/en/Terms-and-Conditions.aspx> and, for electronic format documents, subject to Terms and Conditions for Electronic Documents at <http://www.sgs.com/en/Terms-and-Conditions/Terms-e-Documents.aspx>. Attention is drawn to the limitation of liability, indemnification and jurisdiction issues defined therein. Any holder of this document is advised that information contained hereon reflects the Company's findings at the time of its intervention only and within the limits of Client's instructions, if any. The Company's sole responsibility is to its Client and this document does not exonerate parties to a transaction from exercising all their rights and obligations under the transaction documents. This document cannot be reproduced except in full, without prior written approval of the Company. Any unauthorized alteration, forgery or falsification of the content or appearance of this document is unlawful and offenders may be prosecuted to the fullest extent of the law. Unless otherwise stated the results shown in this test report refer only to the sample(s) tested and such sample(s) are retained for 30 days only.

Attention: To check the authenticity of testing / inspection report & certificate, please contact us at telephone: (86-755) 8307 1443, or email: CN.Doccheck@sgs.com

SGS Bldg, No.4, Jianghao Industrial Park, No.430, Jihua Road, Bantian, Longgang District, Shenzhen, China 518129 t (86-755) 25328888 f (86-755) 83106190 www.sgs.com.cn
中国·深圳·龙岗区坂田吉华路 430 号江源工业园 4 栋 SGS 大楼 邮编: 518129 t (86-755) 25328888 f (86-755) 83106190 e sgs.china@sgs.com

Member of the SGS Group (SGS SA)

Test Report

No.: T52110270182TC

Date: JUN 22, 2021

Page 44 of 83

Part No	Part Description	Restricted Substances	Results of EDXRF(1)	Screening Result of PHTH(2)	Result of Wet Chemical Testing(3) (mg/kg)	Conclusion on EU RoHS	Resubmitted Date
118	Black plastic part (Motor) (Music box)	Pb Cd Hg Cr(VI)▼ PBBs PBDEs DBP BBP DEHP DIBP	BL BL BL BL BL BL --- --- --- ---	--- --- --- --- --- --- --- --- --- ---	--- --- --- --- --- --- ND ND ND ND	Comply Comply Comply Comply Comply Comply Comply Comply Comply Comply	11 Jun 2021
119	Coppery enameled wire (Motor) (Music box)	Pb Cd Hg Cr(VI)▼ PBBs PBDEs DBP BBP DEHP DIBP	BL BL BL BL BL BL --- --- --- ---	--- --- --- --- --- --- BL BL BL BL	--- --- --- --- --- --- --- --- --- ---	Comply Comply Comply Comply Comply Comply Comply Comply Comply Comply	
120	White plastic rotor (Motor) (Music box)	Pb Cd Hg Cr(VI)▼ PBBs PBDEs DBP BBP DEHP DIBP	BL BL BL BL BL BL --- --- --- ---	--- --- --- --- --- --- BL BL BL BL	--- --- --- --- --- --- --- --- --- ---	Comply Comply Comply Comply Comply Comply Comply Comply Comply Comply	



SGS-CSTC 检验检测专用章
Inspection & Testing Services
Shenzhen Branch Testing Center Hardlines

Unless otherwise agreed in writing, this document is issued by the Company subject to its General Conditions of Service printed overleaf, available on request or accessible at <http://www.sgs.com/en/Terms-and-Conditions.aspx> and, for electronic format documents, subject to Terms and Conditions for Electronic Documents at <http://www.sgs.com/en/Terms-and-Conditions/Terms-e-Documents.aspx>. Attention is drawn to the limitation of liability, indemnification and jurisdiction issues defined therein. Any holder of this document is advised that information contained hereon reflects the Company's findings at the time of its intervention only and within the limits of Client's instructions, if any. The Company's sole responsibility is to its Client and this document does not exonerate parties to a transaction from exercising all their rights and obligations under the transaction documents. This document cannot be reproduced except in full, without prior written approval of the Company. Any unauthorized alteration, forgery or falsification of the content or appearance of this document is unlawful and offenders may be prosecuted to the fullest extent of the law. Unless otherwise stated the results shown in this test report refer only to the sample(s) tested and such sample(s) are retained for 30 days only.

Attention: To check the authenticity of testing / inspection report & certificate, please contact us at telephone: (86-755) 8307 1443, or email: CN.Doccheck@sgs.com

SGS Bldg, No.4, Jianghao Industrial Park, No.430, Jihua Road, Bantian, Longgang District, Shenzhen, China 518129 t (86-755) 25328888 f (86-755) 83106190 www.sgs.com.cn
中国·深圳·龙岗区坂田吉华路 430 号江源工业园 4 栋 SGS 大楼 邮编: 518129 t (86-755) 25328888 f (86-755) 83106190 e sgs.china@sgs.com

Member of the SGS Group (SGS SA)

Test Report

No.: T52110270182TC

Date: JUN 22, 2021

Page 45 of 83

Part No	Part Description	Restricted Substances	Results of EDXRF(1)	Screening Result of PHTH(2)	Result of Wet Chemical Testing(3) (mg/kg)	Conclusion on EU RoHS	Resubmitted Date
121	Silvery metal rotor (Motor) (Music box)	Pb Cd Hg Cr(VI)▼ PBBs PBDEs DBP BBP DEHP DIBP	BL BL BL IN -- -- --- --- --- ---	--- --- --- --- --- --- --- --- --- ---	--- --- --- ND --- --- --- --- --- ---	Comply Comply Comply Comply --- --- --- --- --- ---	
122	Beige plastic part (Motor) (Music box)	Pb Cd Hg Cr(VI)▼ PBBs PBDEs DBP BBP DEHP DIBP	BL BL BL BL BL BL --- --- --- ---	--- --- --- --- --- --- BL BL BL BL	--- --- --- --- --- --- --- --- --- ---	Comply Comply Comply Comply Comply Comply Comply Comply Comply Comply	
123	Silvery metal solder (Motor) (Music box)	Pb Cd Hg Cr(VI)▼ PBBs PBDEs DBP BBP DEHP DIBP	BL BL BL BL -- -- --- --- --- ---	--- --- --- --- --- --- --- --- --- ---	--- --- --- --- --- --- --- --- --- ---	Comply Comply Comply Comply --- --- --- --- --- ---	



SGS CSTC (Shenzhen) Co., Ltd.
Shenzhen Branch Testing Center Hardlines

Unless otherwise agreed in writing, this document is issued by the Company subject to its General Conditions of Service printed overleaf, available on request or accessible at <http://www.sgs.com/en/Terms-and-Conditions.aspx> and, for electronic format documents, subject to Terms and Conditions for Electronic Documents at <http://www.sgs.com/en/Terms-and-Conditions/Terms-e-Documents.aspx>. Attention is drawn to the limitation of liability, indemnification and jurisdiction issues defined therein. Any holder of this document is advised that information contained hereon reflects the Company's findings at the time of its intervention only and within the limits of Client's instructions, if any. The Company's sole responsibility is to its Client and this document does not exonerate parties to a transaction from exercising all their rights and obligations under the transaction documents. This document cannot be reproduced except in full, without prior written approval of the Company. Any unauthorized alteration, forgery or falsification of the content or appearance of this document is unlawful and offenders may be prosecuted to the fullest extent of the law. Unless otherwise stated the results shown in this test report refer only to the sample(s) tested and such sample(s) are retained for 30 days only.

Attention: To check the authenticity of testing / inspection report & certificate, please contact us at telephone: (86-755) 8307 1443, or email: CN.Doccheck@sgs.com

SGS Bldg, No.4, Jianghao Industrial Park, No.430, Jihua Road, Bantian, Longgang District, Shenzhen, China 518129 t (86-755) 25328888 f (86-755) 83106190 www.sgs.com.cn
中国·深圳·龙岗区坂田吉华路 430 号江源工业园 4 栋 SGS 大楼 邮编: 518129 t (86-755) 25328888 f (86-755) 83106190 e sgs.china@sgs.com

Member of the SGS Group (SGS SA)

Test Report

No.: T52110270182TC

Date: JUN 22, 2021

Page 46 of 83

Part No	Part Description	Restricted Substances	Results of EDXRF(1)	Screening Result of PHTH(2)	Result of Wet Chemical Testing(3) (mg/kg)	Conclusion on EU RoHS	Resubmitted Date
124	Black washer w/ silvery surface (Motor) (Music box)	Pb Cd Hg Cr(VI)▼ PBBs PBDEs DBP BBP DEHP DIBP	BL BL BL IN BL BL --- --- --- ---	--- --- --- --- --- --- --- --- --- ---	--- --- --- ND --- --- ND ND ND ND	Comply Comply Comply Comply Comply Comply Comply Comply Comply Comply	11 Jun 2021
125	Silvery & coppery metal tube (Motor) (Music box)	Pb Cd Hg Cr(VI)▼ PBBs PBDEs DBP BBP DEHP DIBP	BL BL BL BL -- -- --- --- --- ---	--- --- --- --- --- --- --- --- --- ---	--- --- --- --- --- --- --- --- --- ---	Comply Comply Comply Comply --- --- --- --- --- ---	
126	Silvery metal core wire (Motor) (Music box)	Pb Cd Hg Cr(VI)▼ PBBs PBDEs DBP BBP DEHP DIBP	BL BL BL BL -- -- --- --- --- ---	--- --- --- --- --- --- --- --- --- ---	--- --- --- --- --- --- --- --- --- ---	Comply Comply Comply Comply --- --- --- --- --- ---	



SGS-CSTC 检验检测专用章
Inspection & Testing Services
Shenzhen Branch Testing Center Hardlines

Unless otherwise agreed in writing, this document is issued by the Company subject to its General Conditions of Service printed overleaf, available on request or accessible at <http://www.sgs.com/en/Terms-and-Conditions.aspx> and, for electronic format documents, subject to Terms and Conditions for Electronic Documents at <http://www.sgs.com/en/Terms-and-Conditions/Terms-e-Documents.aspx>. Attention is drawn to the limitation of liability, indemnification and jurisdiction issues defined therein. Any holder of this document is advised that information contained hereon reflects the Company's findings at the time of its intervention only and within the limits of Client's instructions, if any. The Company's sole responsibility is to its Client and this document does not exonerate parties to a transaction from exercising all their rights and obligations under the transaction documents. This document cannot be reproduced except in full, without prior written approval of the Company. Any unauthorized alteration, forgery or falsification of the content or appearance of this document is unlawful and offenders may be prosecuted to the fullest extent of the law. Unless otherwise stated the results shown in this test report refer only to the sample(s) tested and such sample(s) are retained for 30 days only.

Attention: To check the authenticity of testing / inspection report & certificate, please contact us at telephone:(86-755) 8307 1443, or email: CN.Doccheck@sgs.com

SGS Bldg, No.4, Jianghao Industrial Park, No.430, Jihua Road, Bantian, Longgang District, Shenzhen, China 518129 t (86-755) 25328888 f (86-755) 83106190 www.sgs.com.cn
中国·深圳·龙岗区坂田吉华路 430 号江源工业园 4 栋 SGS 大楼 邮编: 518129 t (86-755) 25328888 f (86-755) 83106190 e sgs.china@sgs.com

Member of the SGS Group (SGS SA)

Test Report

No.: T52110270182TC

Date: JUN 22, 2021

Page 47 of 83

Part No	Part Description	Restricted Substances	Results of EDXRF(1)	Screening Result of PHTH(2)	Result of Wet Chemical Testing(3) (mg/kg)	Conclusion on EU RoHS	Resubmitted Date
127	Red plastic (Wire insulation) (Motor) (Music box)	Pb Cd Hg Cr(VI)▼ PBBs PBDEs DBP BBP DEHP DIBP	BL BL BL BL BL BL --- --- --- ---	--- --- --- --- --- --- --- --- --- ---	--- --- --- --- --- --- ND ND ND ND	Comply Comply Comply Comply Comply Comply Comply Comply Comply Comply	
128	Black plastic (Wire insulation) (Motor) (Music box)	Pb Cd Hg Cr(VI)▼ PBBs PBDEs DBP BBP DEHP DIBP	BL BL BL BL BL BL --- --- --- ---	--- --- --- --- --- --- --- --- --- ---	--- --- --- --- --- --- ND ND ND ND	Comply Comply Comply Comply Comply Comply Comply Comply Comply Comply	
129	Dull white plastic part (Motor) (Music box)	Pb Cd Hg Cr(VI)▼ PBBs PBDEs DBP BBP DEHP DIBP	BL BL BL BL BL BL --- --- --- ---	--- --- --- --- --- --- BL BL BL BL	--- --- --- --- --- --- --- --- --- ---	Comply Comply Comply Comply Comply Comply Comply Comply Comply Comply	



SGS-CSTC 检验检测专用章
Inspection & Testing Services
Shenzhen Branch Testing Center Hardlines

Unless otherwise agreed in writing, this document is issued by the Company subject to its General Conditions of Service printed overleaf, available on request or accessible at <http://www.sgs.com/en/Terms-and-Conditions.aspx> and, for electronic format documents, subject to Terms and Conditions for Electronic Documents at <http://www.sgs.com/en/Terms-and-Conditions/Terms-e-Document.aspx>. Attention is drawn to the limitation of liability, indemnification and jurisdiction issues defined therein. Any holder of this document is advised that information contained hereon reflects the Company's findings at the time of its intervention only and within the limits of Client's instructions, if any. The Company's sole responsibility is to its Client and this document does not exonerate parties to a transaction from exercising all their rights and obligations under the transaction documents. This document cannot be reproduced except in full, without prior written approval of the Company. Any unauthorized alteration, forgery or falsification of the content or appearance of this document is unlawful and offenders may be prosecuted to the fullest extent of the law. Unless otherwise stated the results shown in this test report refer only to the sample(s) tested and such sample(s) are retained for 30 days only.

Attention: To check the authenticity of testing / inspection report & certificate, please contact us at telephone: (86-755) 8307 1443, or email: CN.Doccheck@sgs.com

SGS Bldg, No.4, Jianghao Industrial Park, No.430, Jihua Road, Bantian, Longgang District, Shenzhen, China 518129 t (86-755) 25328888 f (86-755) 83106190 www.sgs.com.cn
中国·深圳·龙岗区坂田吉华路 430 号江源工业园 4 栋 SGS 大楼 邮编: 518129 t (86-755) 25328888 f (86-755) 83106190 e sgs.china@sgs.com

Member of the SGS Group (SGS SA)

Test Report

No.: T52110270182TC

Date: JUN 22, 2021

Page 48 of 83

Part No	Part Description	Restricted Substances	Results of EDXRF(1)	Screening Result of PHTH(2)	Result of Wet Chemical Testing(3) (mg/kg)	Conclusion on EU RoHS	Resubmitted Date
130	Silvery metal solder (On pin of motor) (Music box)	Pb Cd Hg Cr(VI)▼ PBBs PBDEs DBP BBP DEHP DIBP	BL BL BL BL -- -- --- --- --- ---	--- --- --- --- --- --- --- --- --- ---	--- --- --- --- --- --- --- --- --- ---	Comply Comply Comply Comply --- --- --- --- --- ---	
131	Silvery metal pin (Motor) (Music box)	Pb Cd Hg Cr(VI)▼ PBBs PBDEs DBP BBP DEHP DIBP	BL BL BL BL -- -- --- --- --- ---	--- --- --- --- --- --- --- --- --- ---	--- --- --- --- --- --- --- --- --- ---	Comply Comply Comply Comply --- --- --- --- --- ---	
132	Silvery metal brush (Motor) (Music box)	Pb Cd Hg Cr(VI)▼ PBBs PBDEs DBP BBP DEHP DIBP	BL BL BL BL -- -- --- --- --- ---	--- --- --- --- --- --- --- --- --- ---	--- --- --- --- --- --- --- --- --- ---	Comply Comply Comply Comply --- --- --- --- --- ---	



SGS-CSTC 检验检测专用章
Inspection & Testing Services
Shenzhen Branch Testing Center Hardlines

Unless otherwise agreed in writing, this document is issued by the Company subject to its General Conditions of Service printed overleaf, available on request or accessible at <http://www.sgs.com/en/Terms-and-Conditions.aspx> and, for electronic format documents, subject to Terms and Conditions for Electronic Documents at <http://www.sgs.com/en/Terms-and-Conditions/Terms-e-Documents.aspx>. Attention is drawn to the limitation of liability, indemnification and jurisdiction issues defined therein. Any holder of this document is advised that information contained hereon reflects the Company's findings at the time of its intervention only and within the limits of Client's instructions, if any. The Company's sole responsibility is to its Client and this document does not exonerate parties to a transaction from exercising all their rights and obligations under the transaction documents. This document cannot be reproduced except in full, without prior written approval of the Company. Any unauthorized alteration, forgery or falsification of the content or appearance of this document is unlawful and offenders may be prosecuted to the fullest extent of the law. Unless otherwise stated the results shown in this test report refer only to the sample(s) tested and such sample(s) are retained for 30 days only.

Attention: To check the authenticity of testing / inspection report & certificate, please contact us at telephone:(86-755) 8307 1443, or email: CN.Doccheck@sgs.com

SGS Bldg, No.4, Jianghao Industrial Park, No.430, Jihua Road, Bantian, Longgang District, Shenzhen, China 518129 t (86-755) 25328888 f (86-755) 83106190 www.sgs.com.cn
中国·深圳·龙岗区坂田吉华路 430 号江源工业园 4 栋 SGS 大楼 邮编: 518129 t (86-755) 25328888 f (86-755) 83106190 e sgs.china@sgs.com

Member of the SGS Group (SGS SA)

Test Report

No.: T52110270182TC

Date: JUN 22, 2021

Page 49 of 83

Part No	Part Description	Restricted Substances	Results of EDXRF(1)	Screening Result of PHTH(2)	Result of Wet Chemical Testing(3) (mg/kg)	Conclusion on EU RoHS	Resubmitted Date
133	Silvery metal cover (Motor) (Music box)	Pb Cd Hg Cr(VI)▼ PBBs PBDEs DBP BBP DEHP DIBP	BL BL BL BL -- -- --- --- --- ---	--- --- --- --- --- --- --- --- --- ---	--- --- --- --- --- --- --- --- --- ---	Comply Comply Comply Comply --- --- --- --- --- ---	
134	Coppery metal part (Motor) (Music box)	Pb Cd Hg Cr(VI)▼ PBBs PBDEs DBP BBP DEHP DIBP	BL BL BL BL -- -- --- --- --- ---	--- --- --- --- --- --- --- --- --- ---	--- --- --- --- --- --- --- --- --- ---	Comply Comply Comply Comply --- --- --- --- --- ---	
135	White brush knit w/ blue printing (Hang Manta Ray)	Pb Cd Hg Cr(VI)▼ PBBs PBDEs DBP BBP DEHP DIBP	BL BL BL BL BL BL --- --- --- ---	--- --- --- --- --- --- BL BL BL BL	--- --- --- --- --- --- --- --- --- ---	Comply Comply Comply Comply Comply Comply Comply Comply Comply Comply	



SGS-CSTC (Shenzhen) Technical Services Co., Ltd.
Shenzhen Branch Testing Center Hardlines

Unless otherwise agreed in writing, this document is issued by the Company subject to its General Conditions of Service printed overleaf, available on request or accessible at <http://www.sgs.com/en/Terms-and-Conditions.aspx> and, for electronic format documents, subject to Terms and Conditions for Electronic Documents at <http://www.sgs.com/en/Terms-and-Conditions/Terms-e-Documents.aspx>. Attention is drawn to the limitation of liability, indemnification and jurisdiction issues defined therein. Any holder of this document is advised that information contained hereon reflects the Company's findings at the time of its intervention only and within the limits of Client's instructions, if any. The Company's sole responsibility is to its Client and this document does not exonerate parties to a transaction from exercising all their rights and obligations under the transaction documents. This document cannot be reproduced except in full, without prior written approval of the Company. Any unauthorized alteration, forgery or falsification of the content or appearance of this document is unlawful and offenders may be prosecuted to the fullest extent of the law. Unless otherwise stated the results shown in this test report refer only to the sample(s) tested and such sample(s) are retained for 30 days only.

Attention: To check the authenticity of testing / inspection report & certificate, please contact us at telephone: (86-755) 8307 1443, or email: CN.Doccheck@sgs.com

SGS Bldg, No.4, Jianghao Industrial Park, No.430, Jihua Road, Bantian, Longgang District, Shenzhen, China 518129 t (86-755) 25328888 f (86-755) 83106190 www.sgs.com.cn
中国·深圳·龙岗区坂田吉华路 430 号江源工业园 4 栋 SGS 大楼 邮编: 518129 t (86-755) 25328888 f (86-755) 83106190 e sgs.china@sgs.com

Member of the SGS Group (SGS SA)

Test Report

No.: T52110270182TC

Date: JUN 22, 2021

Page 50 of 83

Part No	Part Description	Restricted Substances	Results of EDXRF(1)	Screening Result of PHTH(2)	Result of Wet Chemical Testing(3) (mg/kg)	Conclusion on EU RoHS	Resubmitted Date
136	Beige plastic shell (Box in hang Manta Ray)	Pb Cd Hg Cr(VI)▼ PBBs PBDEs DBP BBP DEHP DIBP	BL BL BL BL BL BL --- BL --- BL ---	--- --- --- --- --- --- BL BL BL BL	--- --- --- --- --- --- --- --- --- ---	Comply Comply Comply Comply Comply Comply Comply Comply Comply Comply	
137	Dull silvery metal plate (Box in hang Manta Ray)	Pb Cd Hg Cr(VI)▼ PBBs PBDEs DBP BBP DEHP DIBP	BL BL BL BL -- -- --- --- --- ---	--- --- --- --- --- --- --- --- --- ---	--- --- --- --- --- --- --- --- --- ---	Comply Comply Comply Comply --- --- --- --- --- ---	
138	Silvery metal hook (Box in hang Manta Ray)	Pb Cd Hg Cr(VI)▼ PBBs PBDEs DBP BBP DEHP DIBP	BL BL BL BL -- -- --- --- --- ---	--- --- --- --- --- --- --- --- --- ---	--- --- --- --- --- --- --- --- --- ---	Comply Comply Comply Comply --- --- --- --- --- ---	



SGS-TESTING SERVICES
Shenzhen Branch Testing Center Hardlines

Unless otherwise agreed in writing, this document is issued by the Company subject to its General Conditions of Service printed overleaf, available on request or accessible at <http://www.sgs.com/en/Terms-and-Conditions.aspx> and, for electronic format documents, subject to Terms and Conditions for Electronic Documents at <http://www.sgs.com/en/Terms-and-Conditions/Terms-e-Documents.aspx>. Attention is drawn to the limitation of liability, indemnification and jurisdiction issues defined therein. Any holder of this document is advised that information contained hereon reflects the Company's findings at the time of its intervention only and within the limits of Client's instructions, if any. The Company's sole responsibility is to its Client and this document does not exonerate parties to a transaction from exercising all their rights and obligations under the transaction documents. This document cannot be reproduced except in full, without prior written approval of the Company. Any unauthorized alteration, forgery or falsification of the content or appearance of this document is unlawful and offenders may be prosecuted to the fullest extent of the law. Unless otherwise stated the results shown in this test report refer only to the sample(s) tested and such sample(s) are retained for 30 days only.

Attention: To check the authenticity of testing / inspection report & certificate, please contact us at telephone: (86-755) 8307 1443, or email: CN.Doccheck@sgs.com

SGS Bldg, No.4, Jianghao Industrial Park, No.430, Jihua Road, Bantian, Longgang District, Shenzhen, China 518129 t (86-755) 25328888 f (86-755) 83106190 www.sgs.com.cn
中国·深圳·龙岗区坂田吉华路 430 号江源工业园 4 栋 SGS 大楼 邮编: 518129 t (86-755) 25328888 f (86-755) 83106190 e sgs.china@sgs.com

Member of the SGS Group (SGS SA)

Test Report

No.: T52110270182TC

Date: JUN 22, 2021

Page 51 of 83

Part No	Part Description	Restricted Substances	Results of EDXRF(1)	Screening Result of PHTH(2)	Result of Wet Chemical Testing(3) (mg/kg)	Conclusion on EU RoHS	Resubmitted Date
139	Dull silvery metal bar (Box in hang Manta Ray)	Pb Cd Hg Cr(VI)▼ PBBs PBDEs DBP BBP DEHP DIBP	BL BL BL BL -- -- --- --- --- ---	--- --- --- --- --- --- --- --- --- ---	--- --- --- --- --- --- --- --- --- ---	Comply Comply Comply Comply --- --- --- --- --- ---	
140	Dull silvery metal ring (Box in hang Manta Ray)	Pb Cd Hg Cr(VI)▼ PBBs PBDEs DBP BBP DEHP DIBP	BL BL BL BL -- -- --- --- --- ---	--- --- --- --- --- --- --- --- --- ---	--- --- --- --- --- --- --- --- --- ---	Comply Comply Comply Comply --- --- --- --- --- ---	



SGS-CSTC 检验检测专用章
Inspection & Testing Services
Shenzhen Branch Testing Center Hardlines

Unless otherwise agreed in writing, this document is issued by the Company subject to its General Conditions of Service printed overleaf, available on request or accessible at <http://www.sgs.com/en/Terms-and-Conditions.aspx> and, for electronic format documents, subject to Terms and Conditions for Electronic Documents at <http://www.sgs.com/en/Terms-and-Conditions/Terms-e-Document.aspx>. Attention is drawn to the limitation of liability, indemnification and jurisdiction issues defined therein. Any holder of this document is advised that information contained hereon reflects the Company's findings at the time of its intervention only and within the limits of Client's instructions, if any. The Company's sole responsibility is to its Client and this document does not exonerate parties to a transaction from exercising all their rights and obligations under the transaction documents. This document cannot be reproduced except in full, without prior written approval of the Company. Any unauthorized alteration, forgery or falsification of the content or appearance of this document is unlawful and offenders may be prosecuted to the fullest extent of the law. Unless otherwise stated the results shown in this test report refer only to the sample(s) tested and such sample(s) are retained for 30 days only.

Attention: To check the authenticity of testing / inspection report & certificate, please contact us at telephone:(86-755) 8307 1443, or email: CN.Doccheck@sgs.com

SGS Bldg, No.4, Jianghao Industrial Park, No.430, Jihua Road, Bantian, Longgang District, Shenzhen, China 518129 t (86-755) 25328888 f (86-755) 83106190 www.sgsgroup.com.cn
中国·深圳·龙岗区坂田吉华路 430 号江源工业园 4 栋 SGS 大楼 邮编: 518129 t (86-755) 25328888 f (86-755) 83106190 e sgs.china@sgs.com

Member of the SGS Group (SGS SA)

Remark

- (1) (a) There are the results on total Br while test items on restricted substances are PBBs and PBDEs. There is the result on total Cr while test item on restricted substances is Cr(VI).
- (b) Results are obtained by EDXRF for primary screening, and further chemical testing by ICP-OES (for Cd, Pb, Hg), UV-Vis (for Cr(VI)) and GC-MS (for PBBs, PBDEs) is recommended to be performed if the concentration exceeds the below warning value according to IEC62321-3-1:2013 (unit: mg/kg).

Element	Polymer	Metal	Composite Materials
Cd	$BL \leq (70-3\sigma) < IN < (130+3\sigma) \leq OL$	$BL \leq (70-3\sigma) < IN < (130+3\sigma) \leq OL$	$LOD < IN < (150+3\sigma) \leq OL$
Pb	$BL \leq (700-3\sigma) < IN < (1300+3\sigma) \leq OL$	$BL \leq (700-3\sigma) < IN < (1300+3\sigma) \leq OL$	$BL \leq (500-3\sigma) < IN < (1500+3\sigma) \leq OL$
Hg	$BL \leq (700-3\sigma) < IN < (1300+3\sigma) \leq OL$	$BL \leq (700-3\sigma) < IN < (1300+3\sigma) \leq OL$	$BL \leq (500-3\sigma) < IN < (1500+3\sigma) \leq OL$
Br	$BL \leq (300-3\sigma) < IN$	--	$BL \leq (250-3\sigma) < IN$
Cr	$BL \leq (700-3\sigma) < IN$	$BL \leq (700-3\sigma) < IN$	$BL \leq (500-3\sigma) < IN$

(c) BL = Below Limit, OL = Over Limit, IN = Inconclusive, LOD = Limit of Detection, -- = Not regulated.

(d) The XRF screening test for RoHS elements – The reading may be different to the actual content in the sample be of non-uniformity composition.

- (2) Screening results of PHTH are for primary screening, and further chemical testing by GC-MS (for DBP, BBP, DEHP and DIBP) are recommended to be performed if the concentration exceeds the below warning value (unit: mg/kg).

Compound	Polymer
DBP	$BL \leq 600 < IN$
BBP	$BL \leq 600 < IN$
DEHP	$BL \leq 600 < IN$
DIBP	$BL \leq 600 < IN$

- (3) (a) mg/kg = 0.0001%, MDL=Method detection Limit, ND = Not Detected (<MDL), --- = Not conducted, - = Without BOM.

(b) Unit and MDL in wet chemical test

Test Item	Pb	Cd	Hg	DBP	BBP	DEHP	DIBP
Unit	mg/kg	mg/kg	mg/kg	mg/kg	mg/kg	mg/kg	mg/kg
MDL	10	10	10	100	100	100	100

The MDL for single compound of PBBs and PBDEs is 100 mg/kg,
MDL of Cr(VI) for polymer, composite and leather sample is 10 mg/kg.
MDL of Cr(VI) for metal sample is 0.10µg/cm².



(c) ▼ =Metal sample

- a. The sample is positive for CrVI if the CrVI concentration is greater than 0.13 µg/cm².
The sample coating is considered to contain CrVI
- b. The sample is negative for CrVI if CrVI is ND (concentration less than 0.10 µg/cm²).
The coating is considered a non-CrVI based coating
- c. The result between 0.10 µg/cm² and 0.13 µg/cm² is considered to be inconclusive
- unavoidable coating variations may influence the determination

Information on storage conditions and production date of the tested sample is unavailable and thus Cr(VI) results represent status of the sample at the time of testing.

- (4) Restricted substances and maximum concentration values tolerated by weight in homogeneous materials under RoHS Directive: Cd: 100mg/kg, Pb/Hg/Cr(VI)/PBBs/PBDEs/DEHP/DBP/BBP/DIBP: 1000mg/kg.

The limit is quoted from RoHS Directive (EU) 2015/863.

IEC 62321 series is equivalent to EN 62321 series

https://www.cenelec.eu/dyn/www/f?p=104:30:1742232870351101:::FSP_ORG_ID,FSP_LANG_ID:1258637,25

- (5) * = Considering insufficient sample amount, the Method Detection Limit (MDL) is raised appropriately.

- (6) ### According to the product specification provided from client, it is possible the source of lead in part No.085 could be from the glass/ceramic material of that electronic component which is exempted by RoHS regulatory (Directive 2015/863/EU amending Annex II to Directive 2011/65/EU of The European Parliament and of The Council of 31 March 2015). However, the numerical result of detected restricted substances in part No.085 cannot be related back to the concentration of the substances in the original homogeneous material.



SGS CSTC (Shenzhen) Co., Ltd.
Shenzhen Branch Testing Center Hardlines

Unless otherwise agreed in writing, this document is issued by the Company subject to its General Conditions of Service printed overleaf, available on request or accessible at <http://www.sgs.com/en/Terms-and-Conditions.aspx> and, for electronic format documents, subject to Terms and Conditions for Electronic Documents at <http://www.sgs.com/en/Terms-and-Conditions/Terms-e-Document.aspx>. Attention is drawn to the limitation of liability, indemnification and jurisdiction issues defined therein. Any holder of this document is advised that information contained hereon reflects the Company's findings at the time of its intervention only and within the limits of Client's instructions, if any. The Company's sole responsibility is to its Client and this document does not exonerate parties to a transaction from exercising all their rights and obligations under the transaction documents. This document cannot be reproduced except in full, without prior written approval of the Company. Any unauthorized alteration, forgery or falsification of the content or appearance of this document is unlawful and offenders may be prosecuted to the fullest extent of the law. Unless otherwise stated the results shown in this test report refer only to the sample(s) tested and such sample(s) are retained for 30 days only.

Attention: To check the authenticity of testing / inspection report & certificate, please contact us at telephone:(86-755) 8307 1443, or email: CN.Doccheck@sgs.com

SGS Bldg, No.4, Jianghao Industrial Park, No.430, Jihua Road, Bantian, Longgang District, Shenzhen, China 518129 t (86-755) 25328888 f (86-755) 83106190 www.sgs.com.cn
中国·深圳·龙岗区坂田吉华路 430 号江源工业园 4 栋 SGS 大楼 邮编: 518129 t (86-755) 25328888 f (86-755) 83106190 e sgs.china@sgs.com

Remark:

1. Since the data and / or information above division line of front page is provided by the applicant, the relevant results or conclusions of this report are only made for these data and / or information, SGS shall not be responsible for the authenticity and integrity of such data and information and the validity of the results and / or conclusions arising therefrom. Testing results only apply to the sample as received.
2. The statement of conformity has considered the decision rule based on the Guarded acceptance (8.3.2 of ISO/IEC GUIDE 98-4:2012). When the measured value falls within the guard band, only the test data and measurement uncertainty will be reported. The guard band is equal to the expanded measurement uncertainty with a 95% coverage probability($k=2$), $w = U_{95}$. The Probability of False Accept and the Probability of False Reject of the decision rule are 2.5%.

For Upper Tolerance Limit (T_U):

Pass - when the measurement result is below $T_U - U_{95}$

Fail - when the measurement result is above $T_U + U_{95}$

Inconclusive - when the measurement result is falling in guard band $[T_U - U_{95}, T_U + U_{95}]$

For Lower Tolerance Limit (T_L):

Pass - when the measurement result is above $T_L + U_{95}$

Fail - when the measurement result is below $T_L - U_{95}$

Inconclusive - when the measurement result is falling in guard band $[T_L - U_{95}, T_L + U_{95}]$


SGS-CSTC (Shenzhen) Technical Services Co., Ltd.
Shenzhen Branch Testing Center Hardlines

Unless otherwise agreed in writing, this document is issued by the Company subject to its General Conditions of Service printed overleaf, available on request or accessible at <http://www.sgs.com/en/Terms-and-Conditions.aspx> and, for electronic format documents, subject to Terms and Conditions for Electronic Documents at <http://www.sgs.com/en/Terms-and-Conditions/Terms-e-Documents.aspx>. Attention is drawn to the limitation of liability, indemnification and jurisdiction issues defined therein. Any holder of this document is advised that information contained hereon reflects the Company's findings at the time of its intervention only and within the limits of Client's instructions, if any. The Company's sole responsibility is to its Client and this document does not exonerate parties to a transaction from exercising all their rights and obligations under the transaction documents. This document cannot be reproduced except in full, without prior written approval of the Company. Any unauthorized alteration, forgery or falsification of the content or appearance of this document is unlawful and offenders may be prosecuted to the fullest extent of the law. Unless otherwise stated the results shown in this test report refer only to the sample(s) tested and such sample(s) are retained for 30 days only.

Attention: To check the authenticity of testing / inspection report & certificate, please contact us at telephone: (86-755) 8307 1443, or email: CN.Doccheck@sgs.com

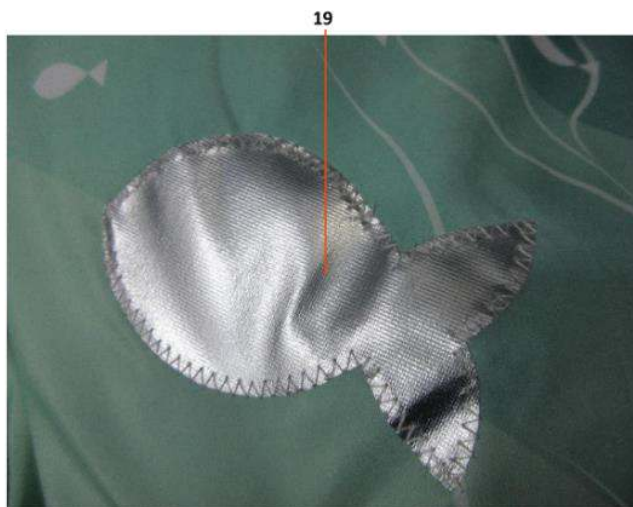
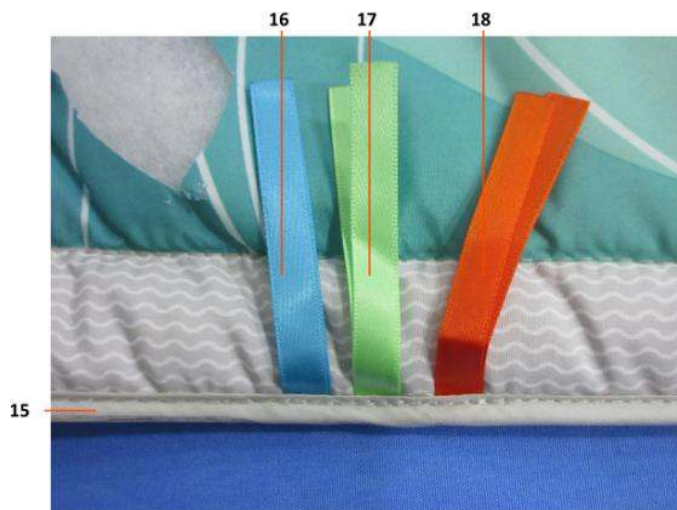
SGS Bldg, No.4, Jianghao Industrial Park, No.430, Jihua Road, Bantian, Longgang District, Shenzhen, China 518129 t (86-755) 25328888 f (86-755) 83106190 www.sgs.com
中国·深圳·龙岗区坂田吉华路 430 号江豪工业园 4 栋 SGS 大楼 邮编: 518129 t (86-755) 25328888 f (86-755) 83106190 e sgs.china@sgs.com



1



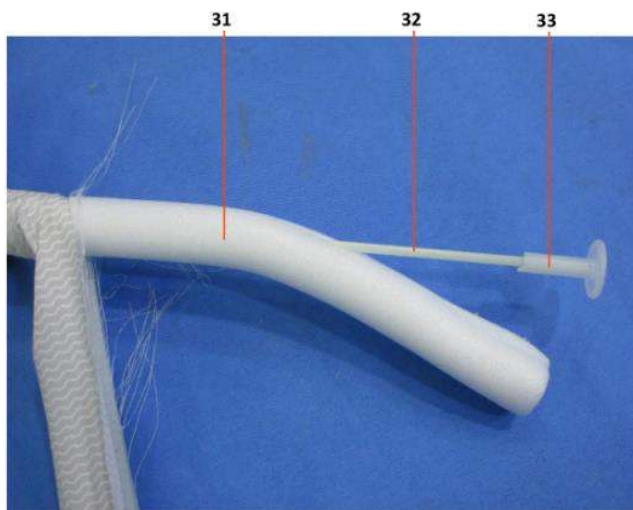


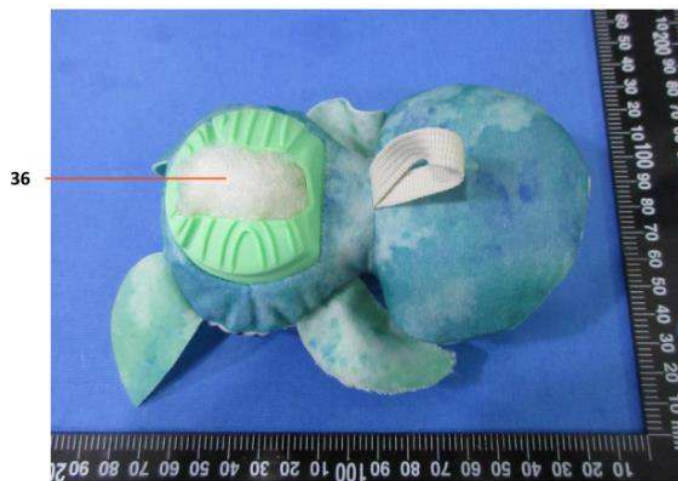


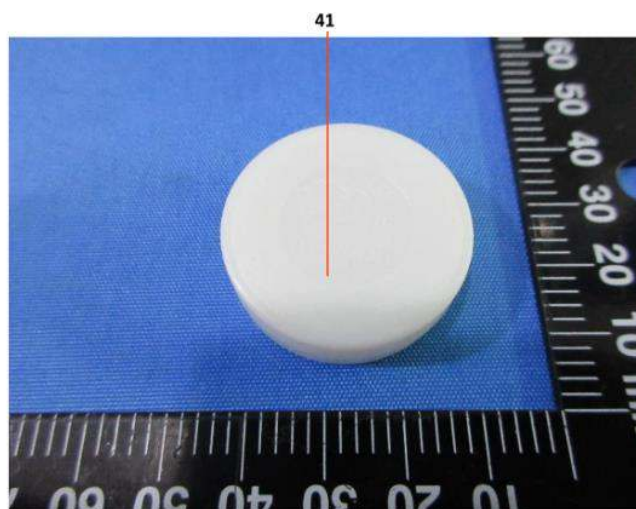


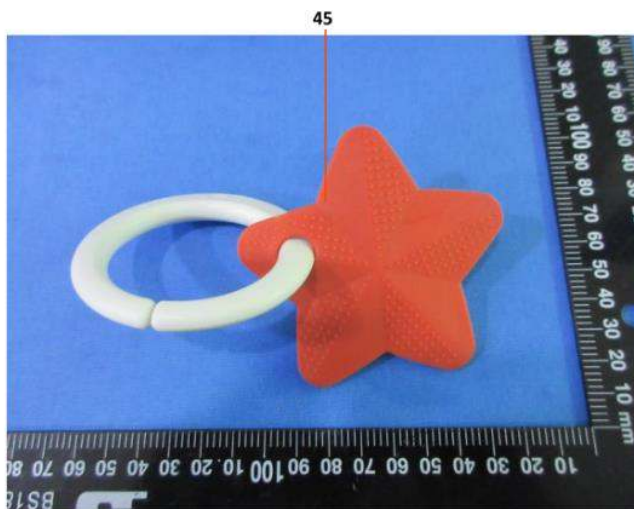
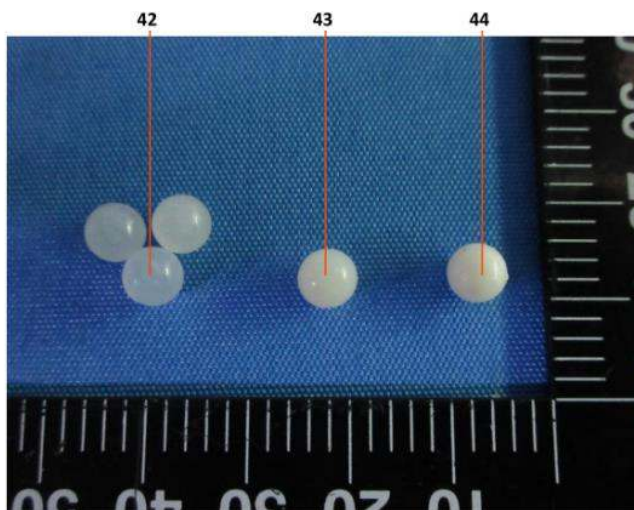


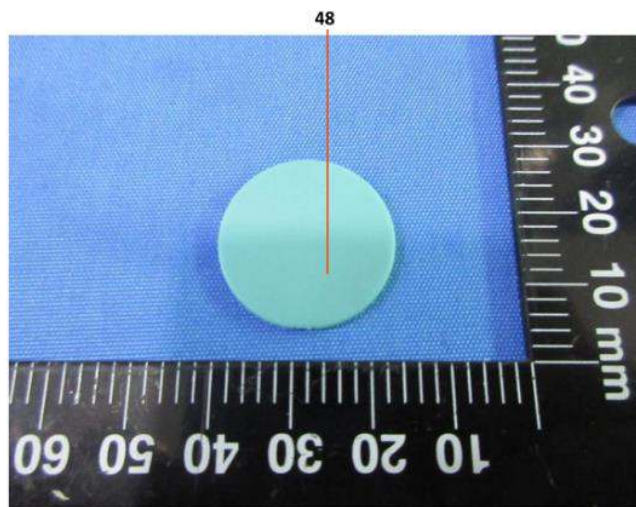
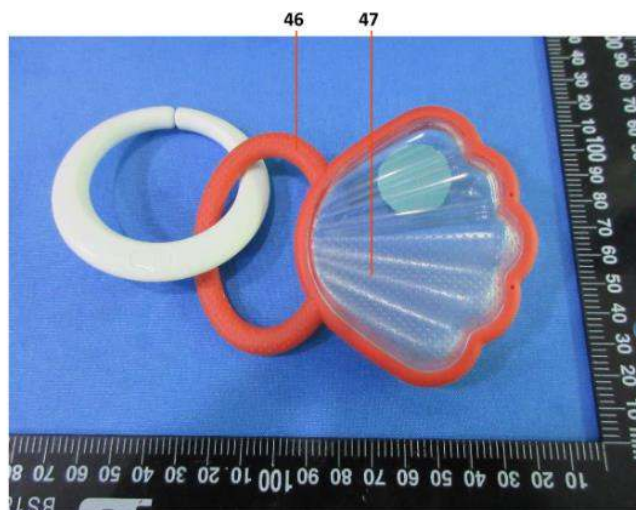


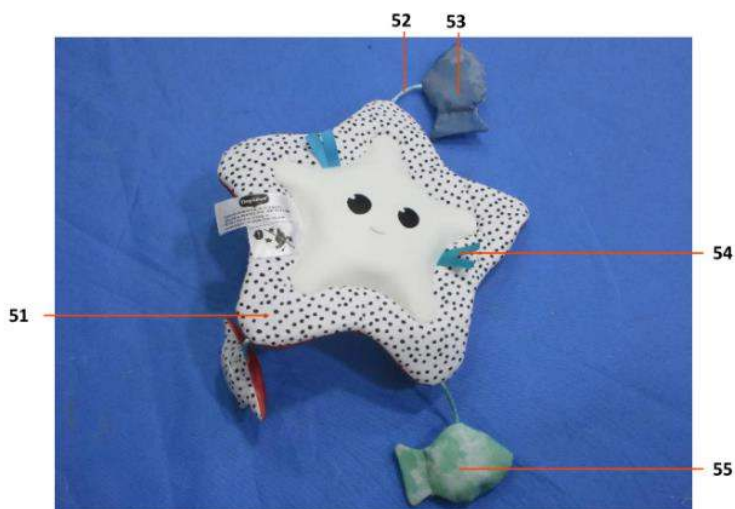
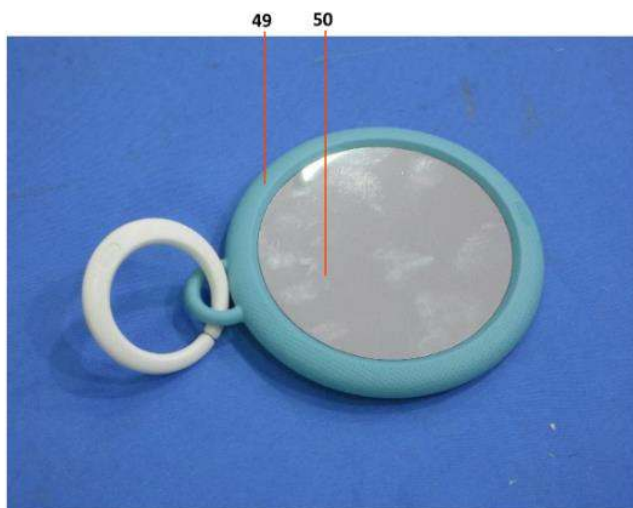


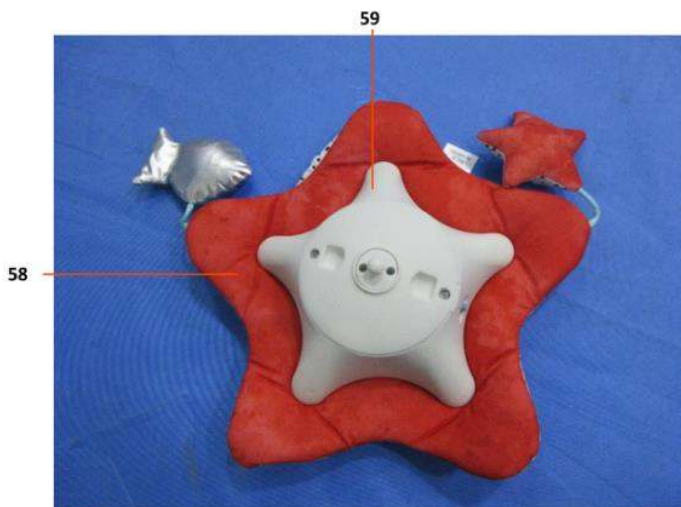
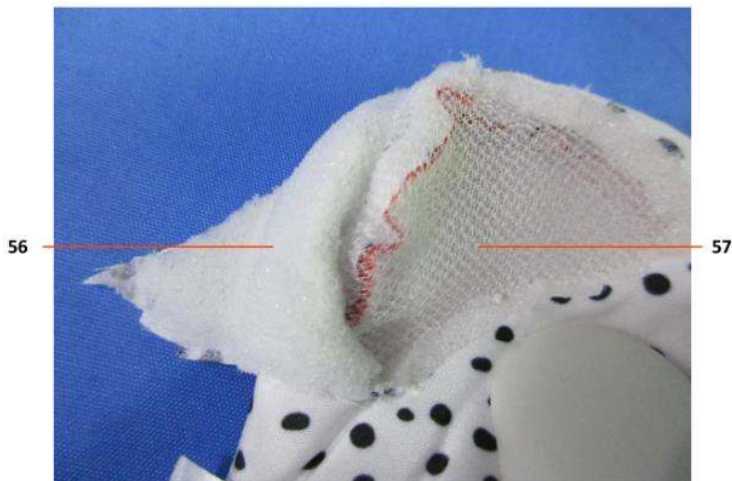


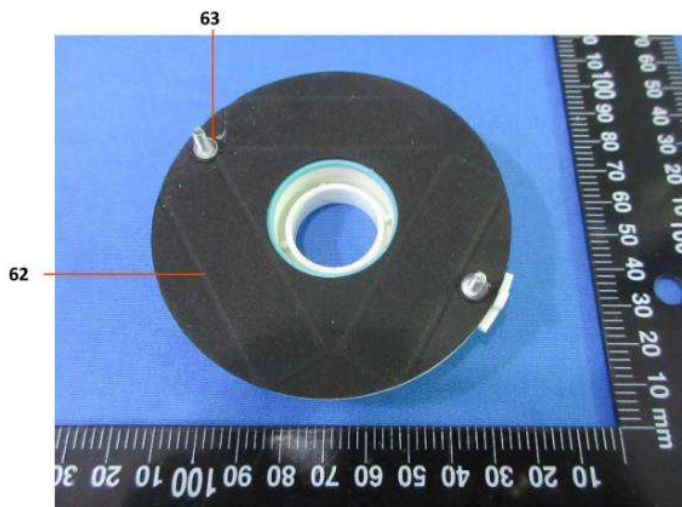
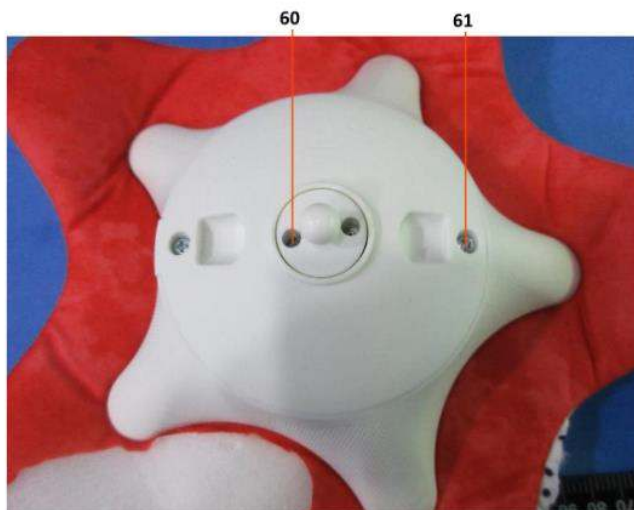












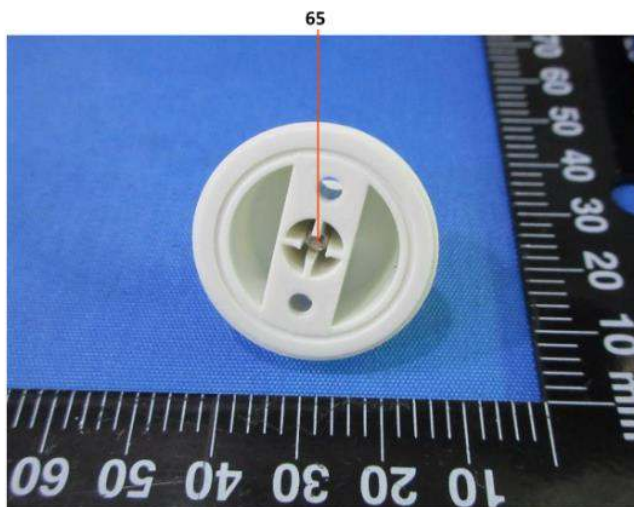
SGS-CSTC (China) Technical Services Co., Ltd.
Shenzhen Branch Testing Center Hardlines

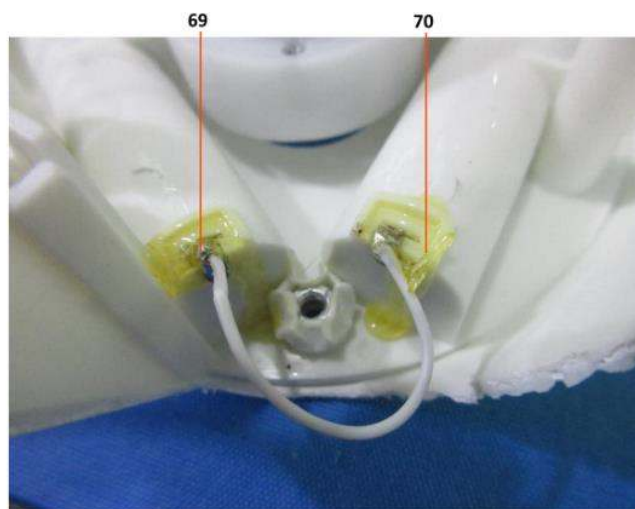
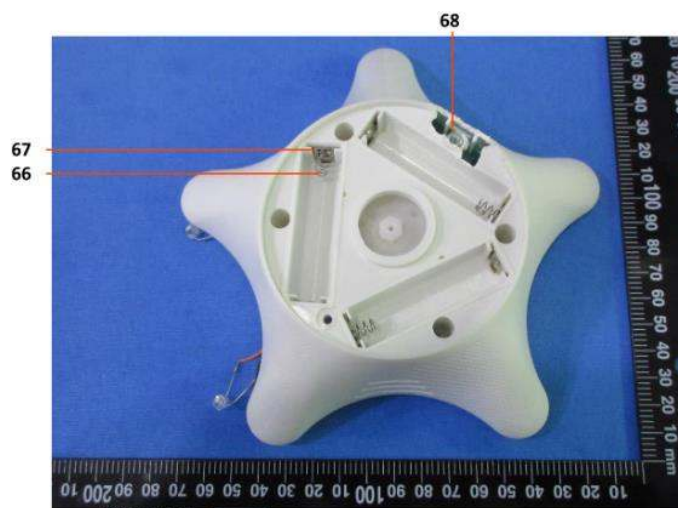
Unless otherwise agreed in writing, this document is issued by the Company subject to its General Conditions of Service printed overleaf, available on request or accessible at <http://www.sgs.com/en/Terms-and-Conditions.aspx> and, for electronic format documents, subject to Terms and Conditions for Electronic Documents at <http://www.sgs.com/en/Terms-and-Conditions/Terms-e-Document.aspx>. Attention is drawn to the limitation of liability, indemnification and jurisdiction issues defined therein. Any holder of this document is advised that information contained hereon reflects the Company's findings at the time of its intervention only and within the limits of Client's instructions, if any. The Company's sole responsibility is to its Client and this document does not exonerate parties to a transaction from exercising all their rights and obligations under the transaction documents. This document cannot be reproduced except in full, without prior written approval of the Company. Any unauthorized alteration, forgery or falsification of the content or appearance of this document is unlawful and offenders may be prosecuted to the fullest extent of the law. Unless otherwise stated the results shown in this test report refer only to the sample(s) tested and such sample(s) are retained for 30 days only.

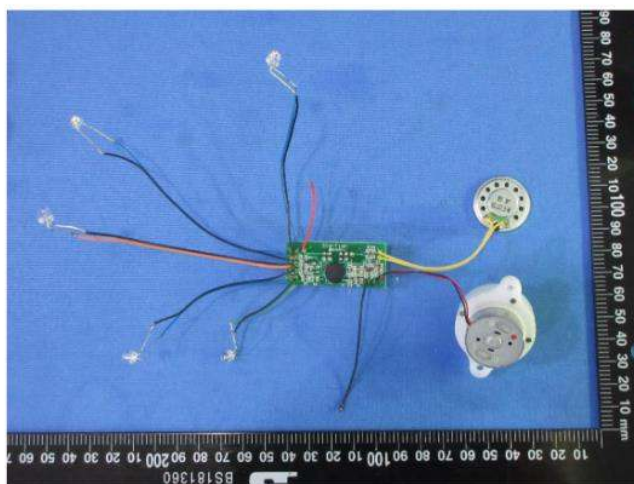
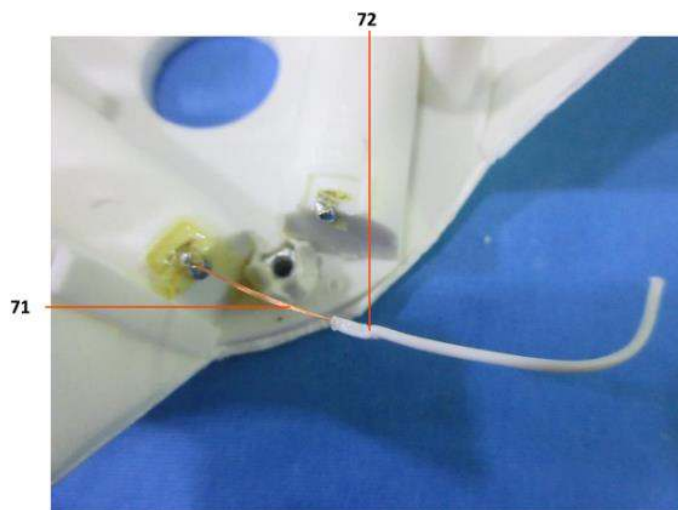
Attention: To check the authenticity of testing / inspection report & certificate, please contact us at telephone: (86-755) 8307 1443, or email: CN.Doccheck@sgs.com

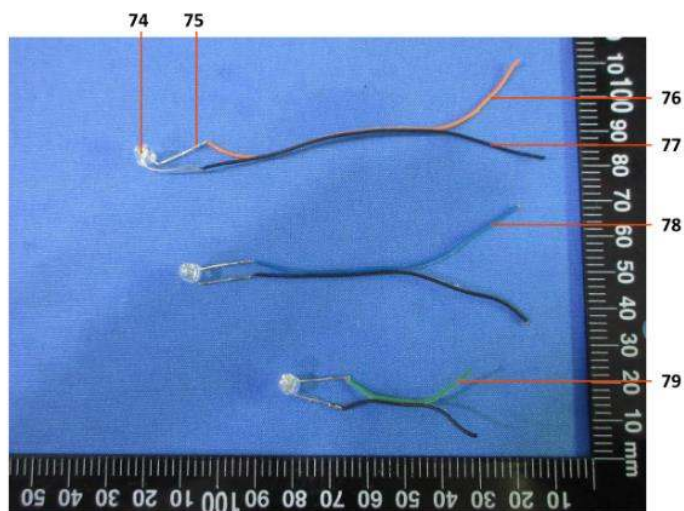
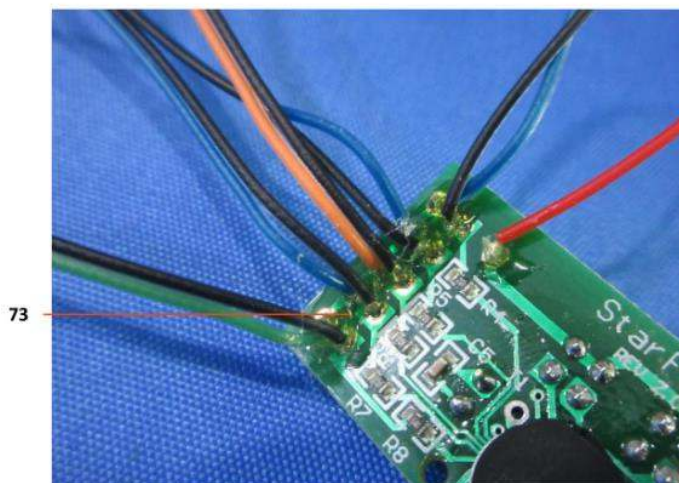
SGS Bldg, No.4, Jianghao Industrial Park, No.430, Jihua Road, Bantian, Longgang District, Shenzhen, China 518129 t (86-755) 25328888 f (86-755) 83106190 www.sgs.com
中国·深圳·龙岗区坂田吉华路 430 号江源工业园 4 栋 SGS 大楼 邮编: 518129 t (86-755) 25328888 f (86-755) 83106190 sgs.china@sgs.com

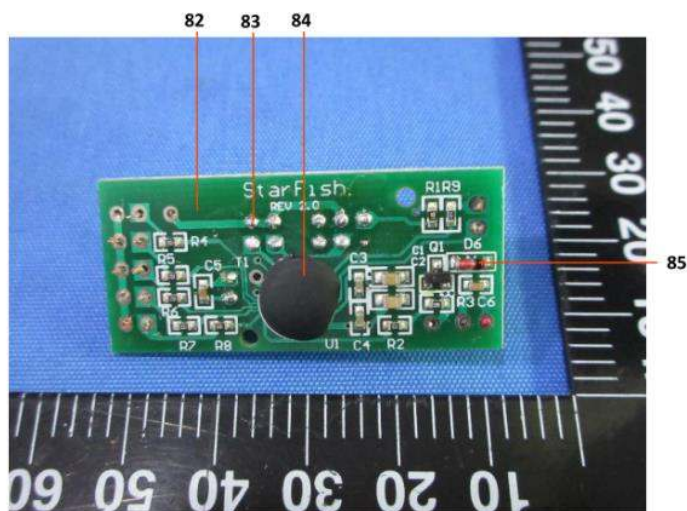
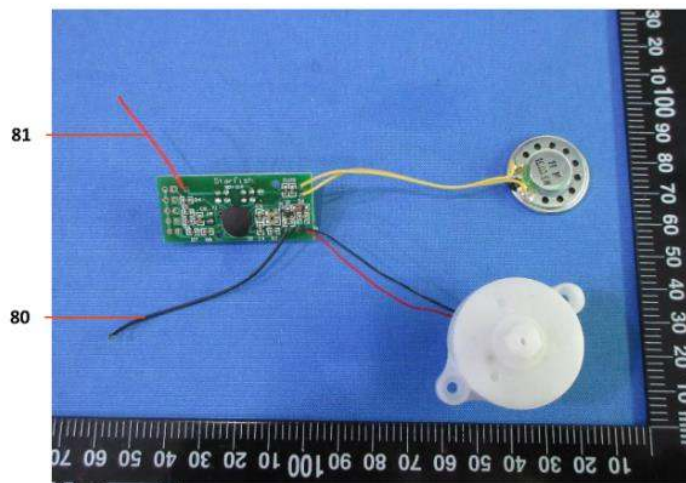
Member of the SGS Group (SGS SA)

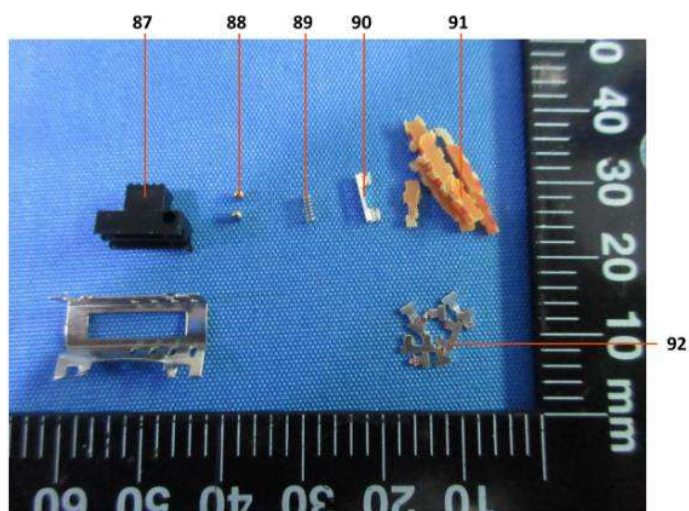
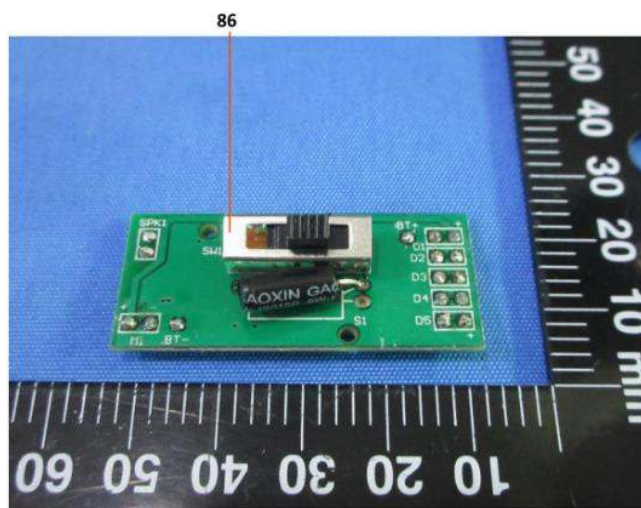


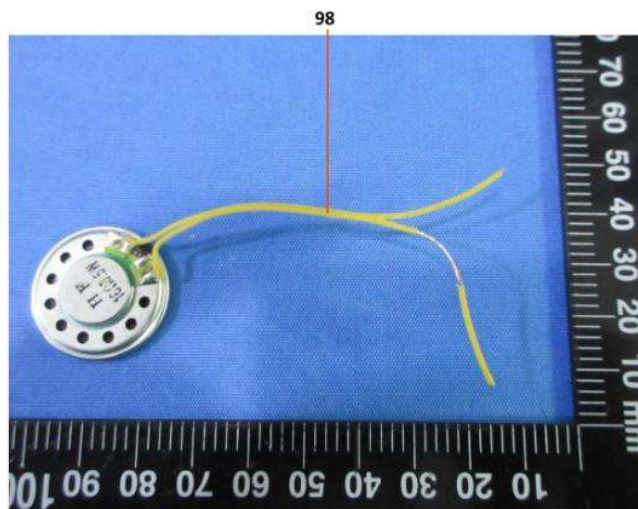
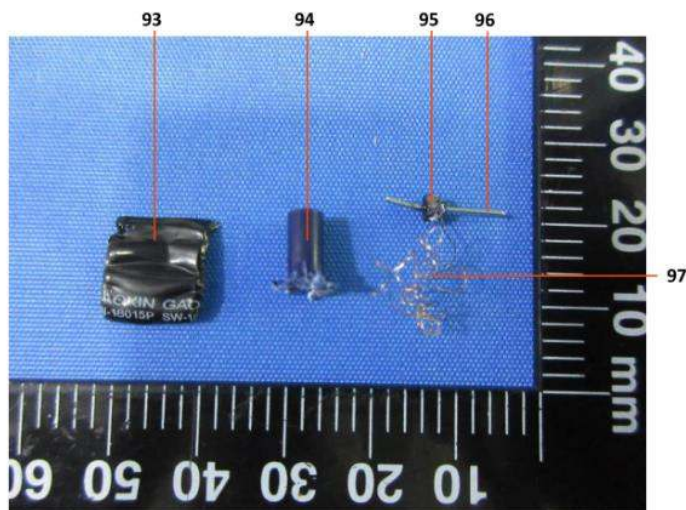


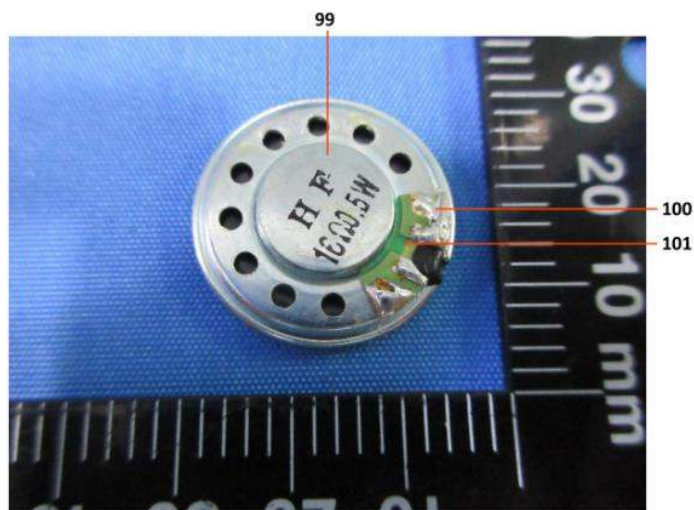








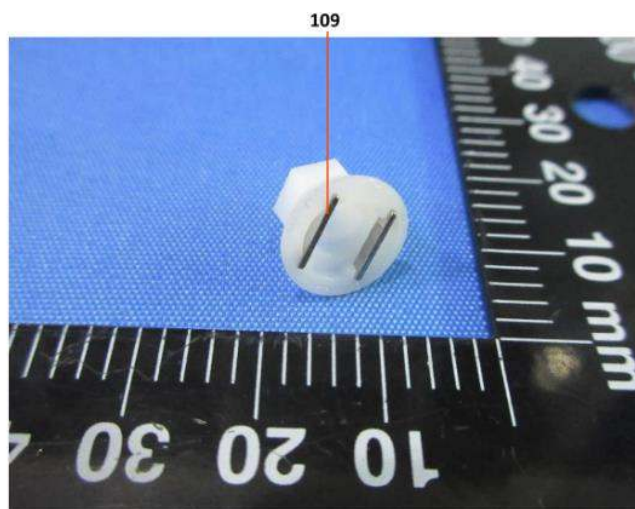
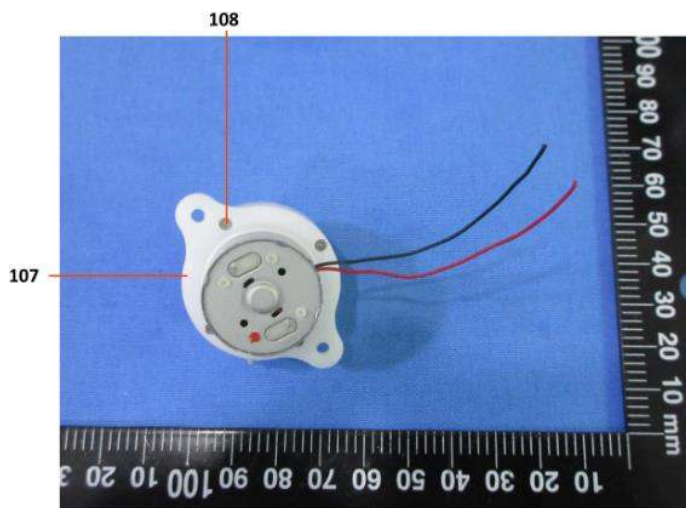


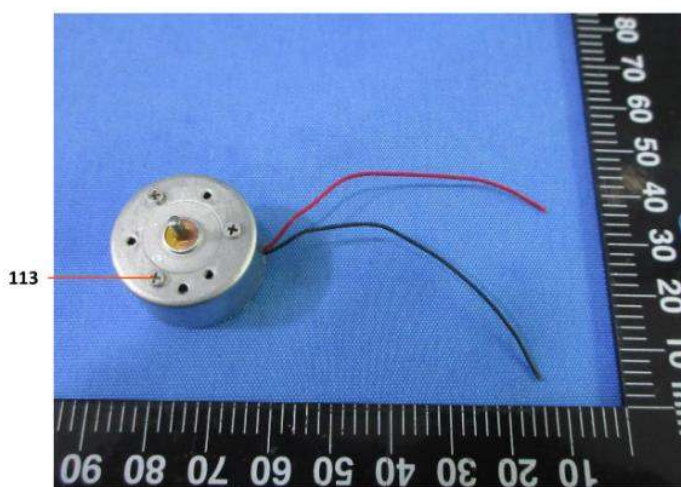
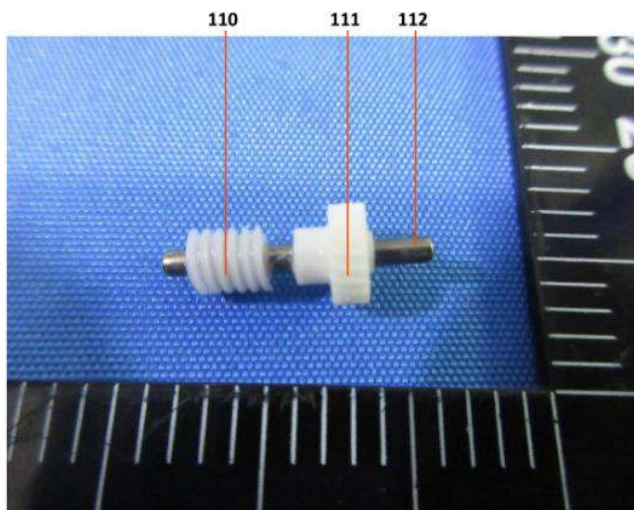


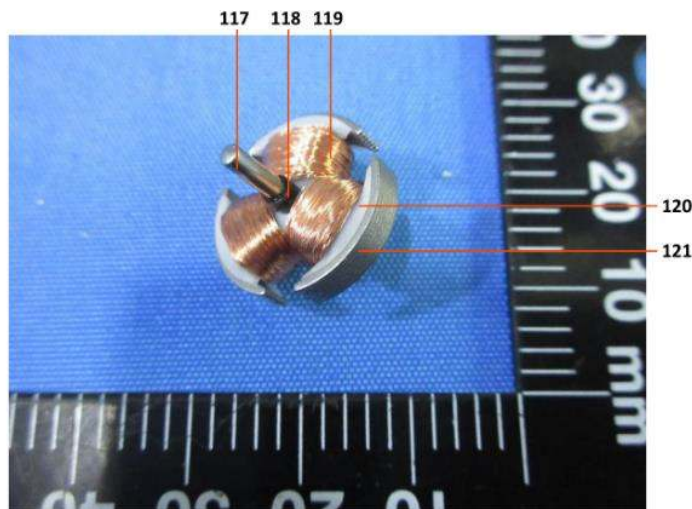
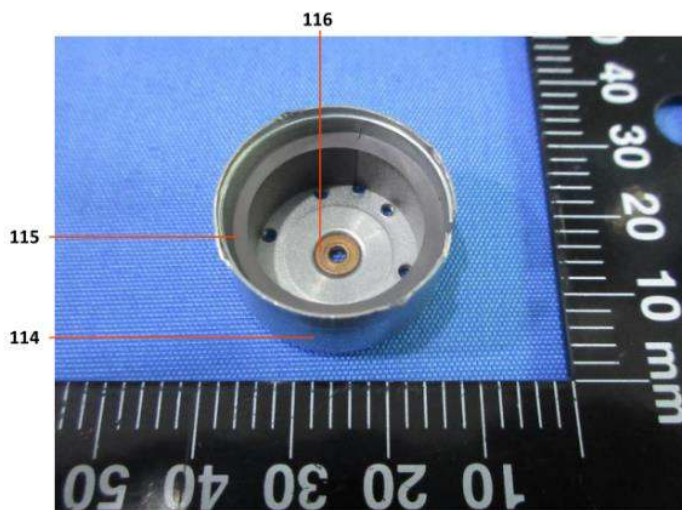
Unless otherwise agreed in writing, this document is issued by the Company subject to its General Conditions of Service printed overleaf, available on request or accessible at <http://www.sgs.com/en/Terms-and-Conditions.aspx> and, for electronic format documents, subject to Terms and Conditions for Electronic Documents at <http://www.sgs.com/en/Terms-and-Conditions/Terms-e-Document.aspx>. Attention is drawn to the limitation of liability, indemnification and jurisdiction issues defined therein. Any holder of this document is advised that information contained hereon reflects the Company's findings at the time of its intervention only and within the limits of Client's instructions, if any. The Company's sole responsibility is to its Client and this document does not exonerate parties to a transaction from exercising all their rights and obligations under the transaction documents. This document cannot be reproduced except in full, without prior written approval of the Company. Any unauthorized alteration, forgery or falsification of the content or appearance of this document is unlawful and offenders may be prosecuted to the fullest extent of the law. Unless otherwise stated the results shown in this test report refer only to the sample(s) tested and such sample(s) are retained for 30 days only.

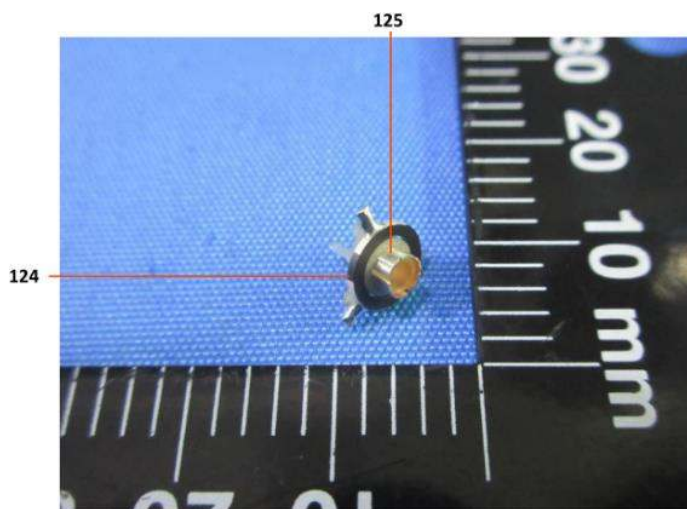
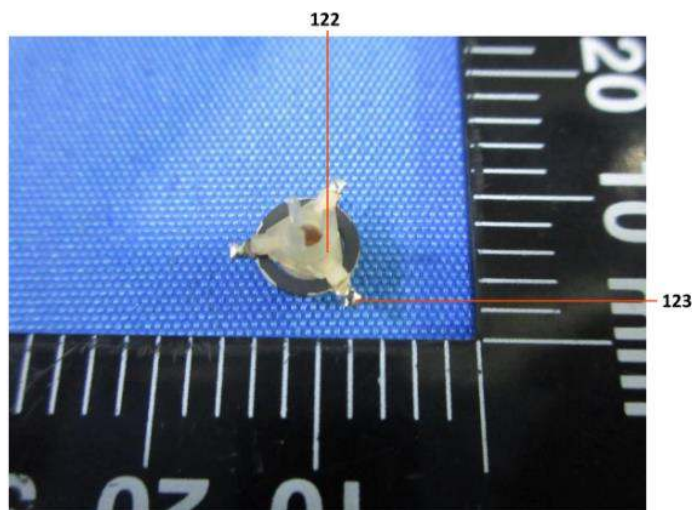
Attention: To check the authenticity of testing / inspection report & certificate, please contact us at telephone: (86-755) 8307 1443, or email: CN.Doccheck@sgs.com

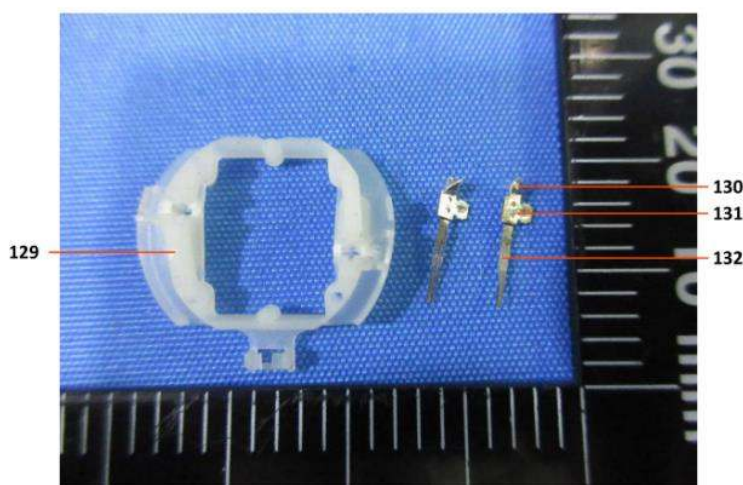
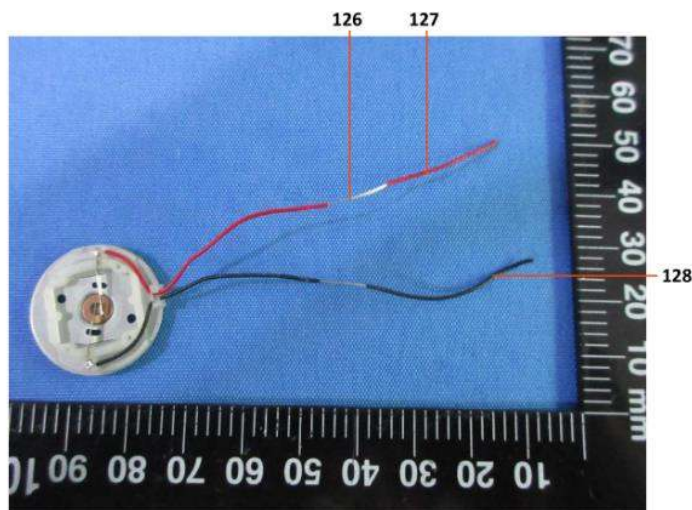
SGS Bldg, No.4, Jianghao Industrial Park, No.430, Jihua Road, Bantian, Longgang District, Shenzhen, China 518129 t (86-755) 25328888 f (86-755) 83106190 www.sgs.com.cn
中国·深圳·龙岗区坂田吉华路 430 号江源工业园 4 栋 SGS 大楼 邮编: 518129 t (86-755) 25328888 f (86-755) 83106190 e sgs.china@sgs.com

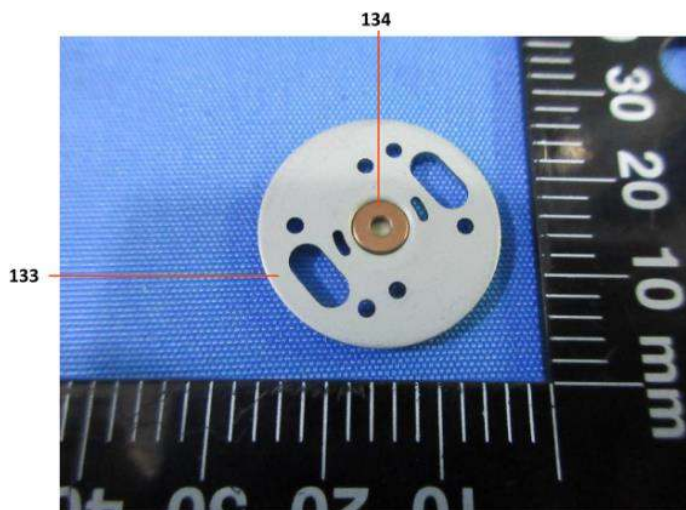


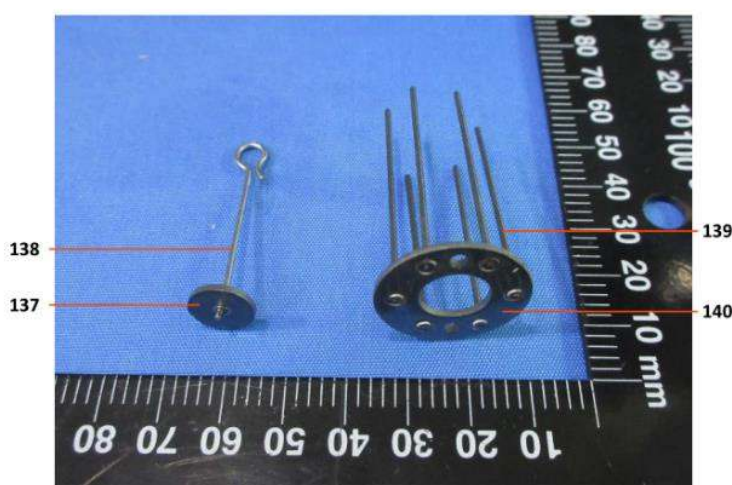
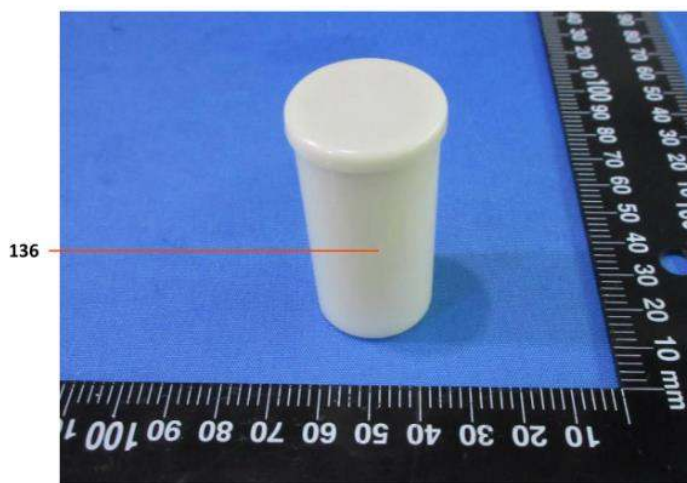












*** End of Report ***



SGS-CSTC (China) Technical Services Co., Ltd.
Shenzhen Branch Testing Center Hardlines

Unless otherwise agreed in writing, this document is issued by the Company subject to its General Conditions of Service printed overleaf, available on request or accessible at <http://www.sgs.com/en/Terms-and-Conditions.aspx> and, for electronic format documents, subject to Terms and Conditions for Electronic Documents at <http://www.sgs.com/en/Terms-and-Conditions/Terms-e-Documents.aspx>. Attention is drawn to the limitation of liability, indemnification and jurisdiction issues defined therein. Any holder of this document is advised that information contained hereon reflects the Company's findings at the time of its intervention only and within the limits of Client's instructions, if any. The Company's sole responsibility is to its Client and this document does not exonerate parties to a transaction from exercising all their rights and obligations under the transaction documents. This document cannot be reproduced except in full, without prior written approval of the Company. Any unauthorized alteration, forgery or falsification of the content or appearance of this document is unlawful and offenders may be prosecuted to the fullest extent of the law. Unless otherwise stated the results shown in this test report refer only to the sample(s) tested and such sample(s) are retained for 30 days only.

Attention: To check the authenticity of testing / inspection report & certificate, please contact us at telephone: (86-755) 8307 1443, or email: CN.Doccheck@sgs.com

SGS Bldg, No.4, Jianghao Industrial Park, No.430, Jihua Road, Bantian, Longgang District, Shenzhen, China 518129 t (86-755) 25328888 f (86-755) 83106190 www.sgs.com.cn
中国·深圳·龙岗区坂田吉华路 430 号江源工业园 4 栋 SGS 大楼 邮编: 518129 t (86-755) 25328888 f (86-755) 83106190 e sgs.china@sgs.com

Member of the SGS Group (SGS SA)