

Doona motion display- assembly instructions



Doona motion display- Full kit

- 3 Black bags
- 1 Grey Trolley



Cases content



**Wide wall
(6mm) X2**

Cover X1

Podium X1

**Narrow walls (10mm) -
upper holes X1 lower holes X1**

Cases content

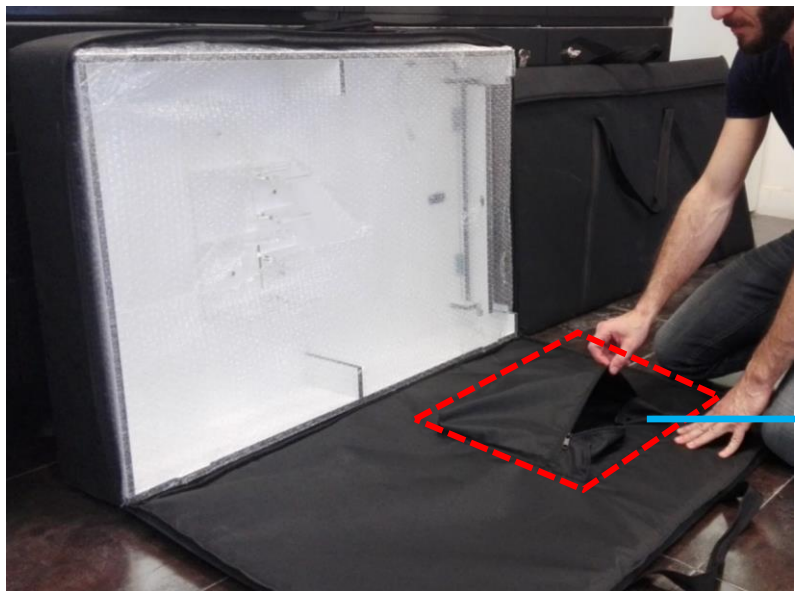


Doona motion X1



Control box X1

Cases content



Accessories



X8



X1



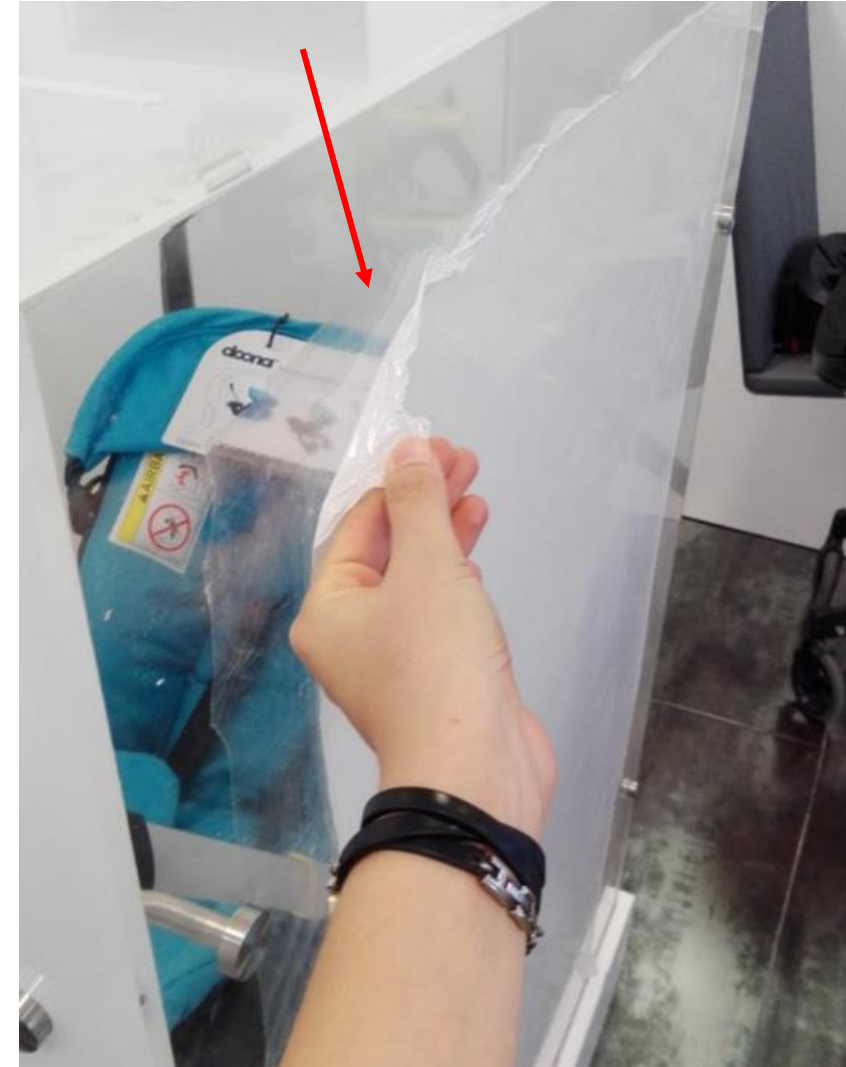
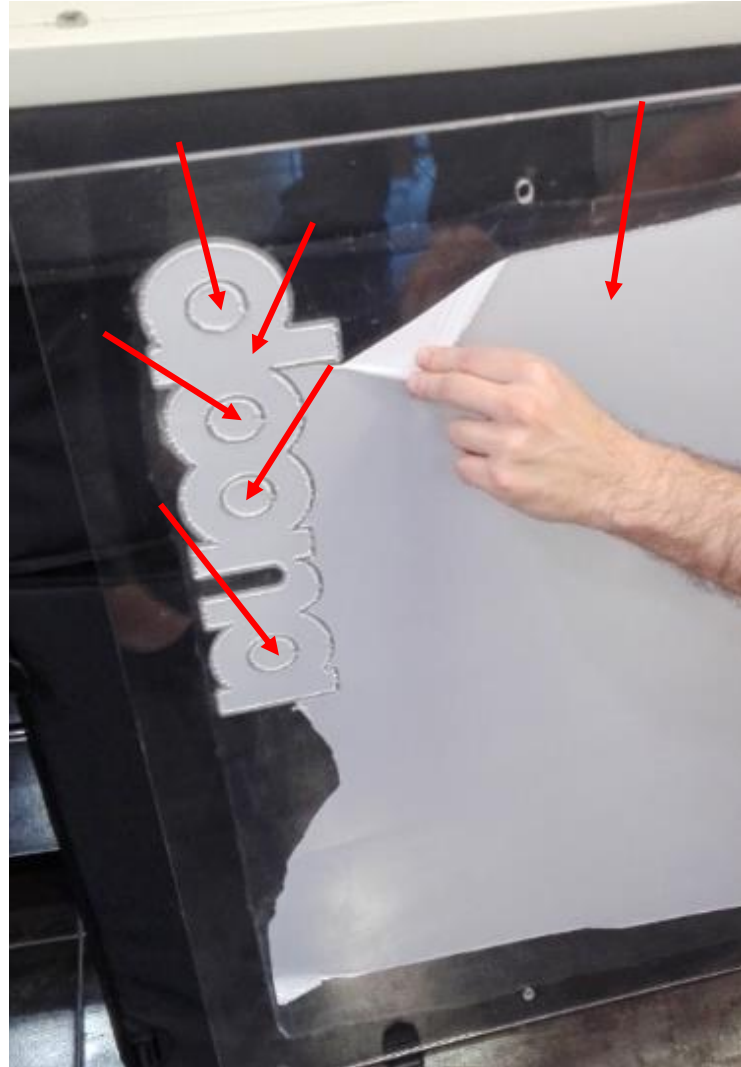
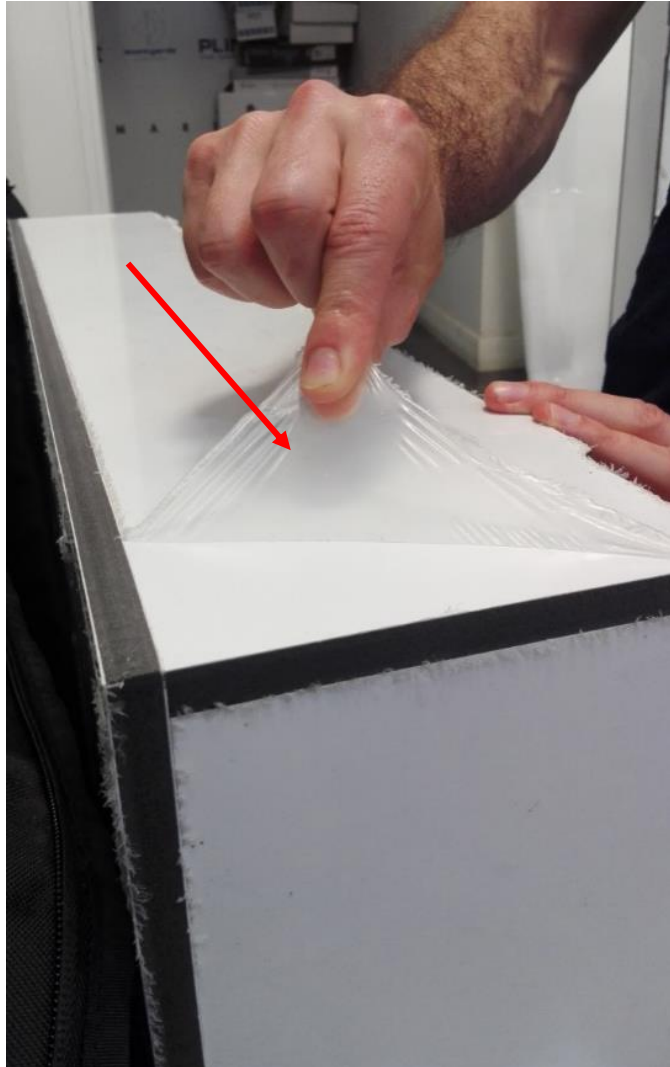
X4



X1

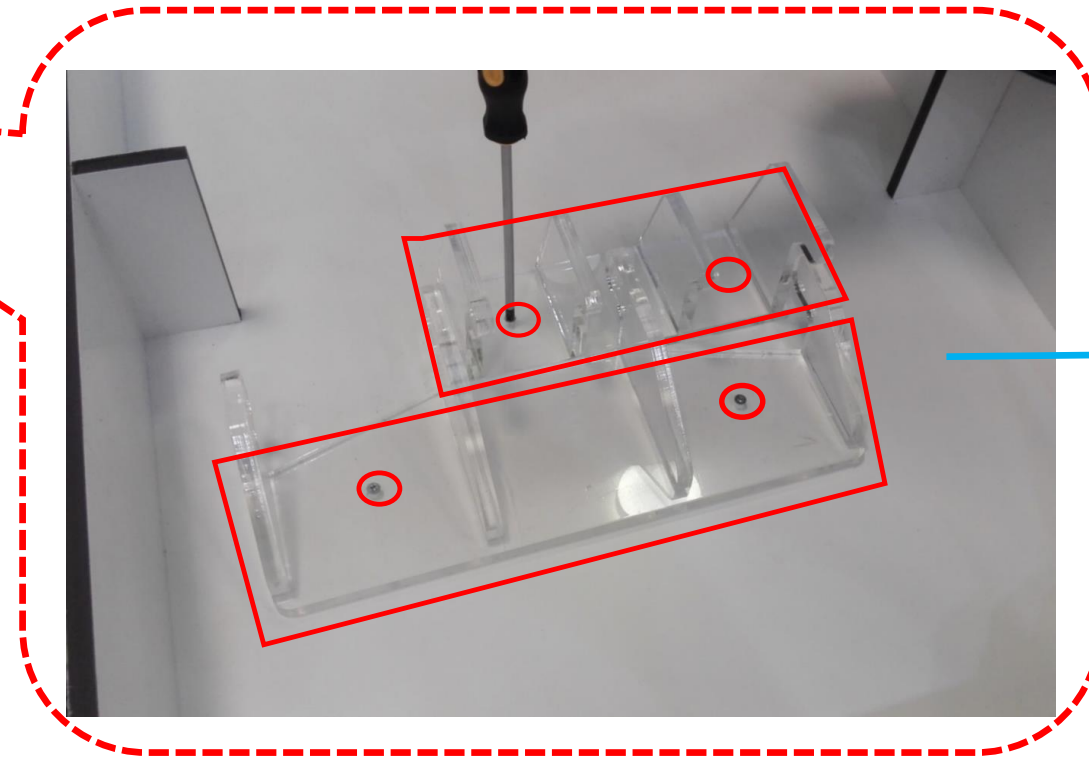
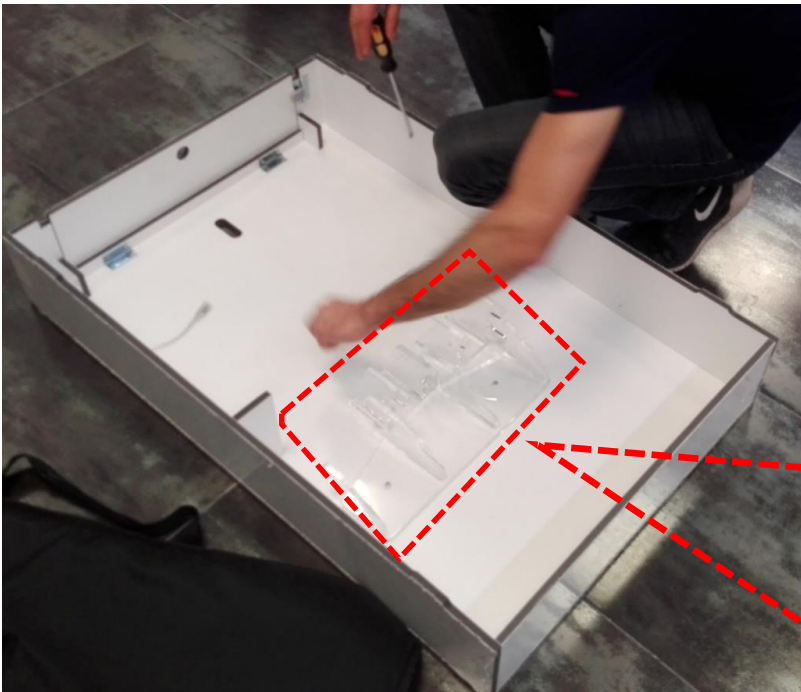
Preparation for assembly- 1

Remove nylon cover from **all** parts



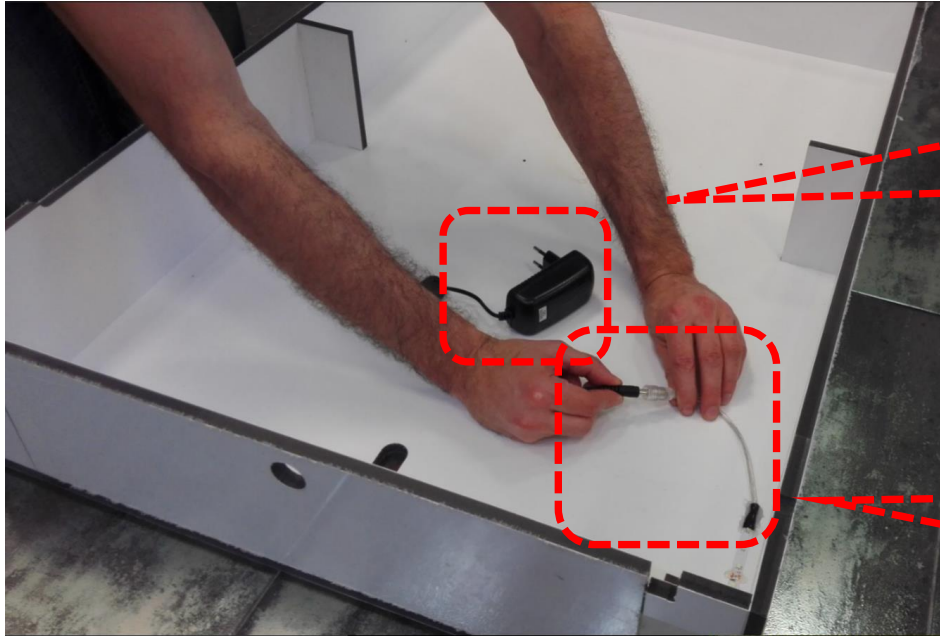
Preparation for assembly- 2

Remove 2 plastic parts from inside the podium (releasing 4 screws)



Assembly- 1

- Connect black transmitter to bottom part of the podium

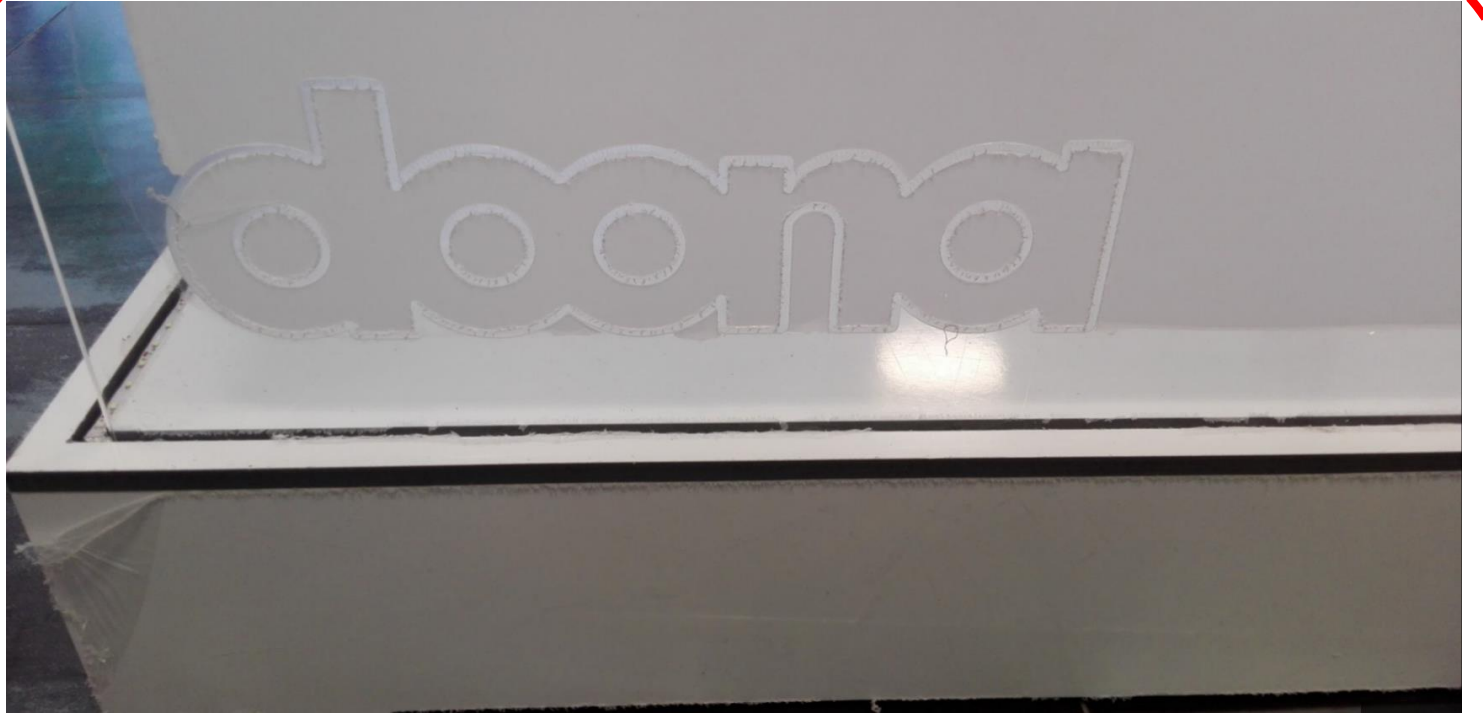
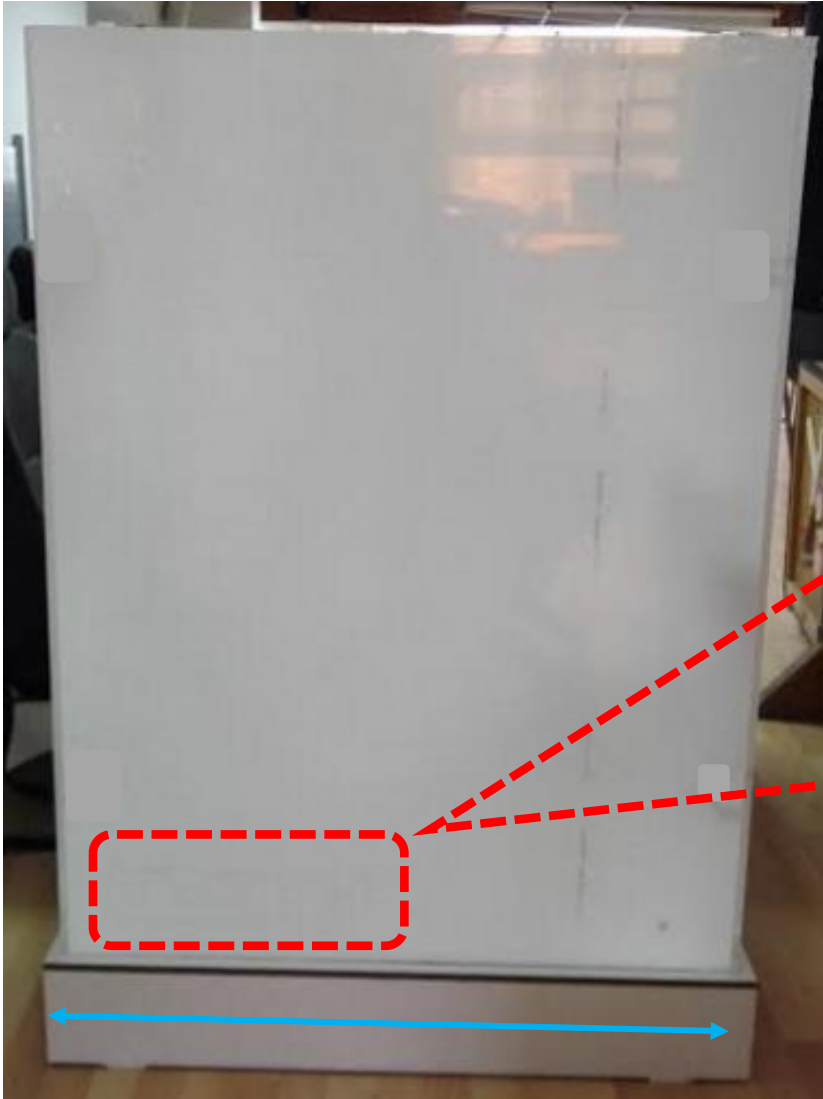


- Turn the podium to upright position



Assembly- 2

- Connect the wide wall to the **longer** side of the podium



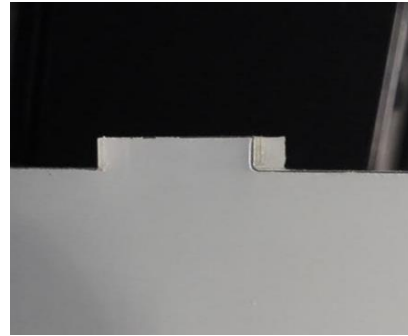
Make sure that “doona” sign at the bottom of the wall is facing **upright and outward**

Assembly- 3.1

- Place the narrow wall- **upper** holes on the **shorter** side of the podium

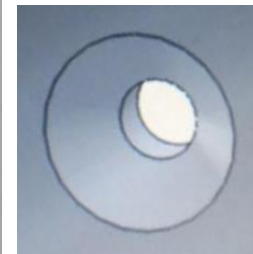
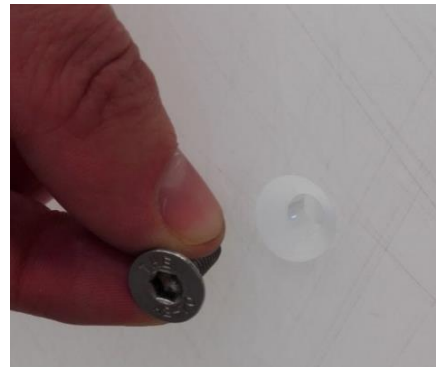


1.



Pointing
upward

2.



Make sure the
cone shape hole is
facing **outward**

3.

Make sure **the hole in the podium** is facing toward narrow wall- **upper** holes

Assembly- 3.2

- Connect wide wall to narrow wall

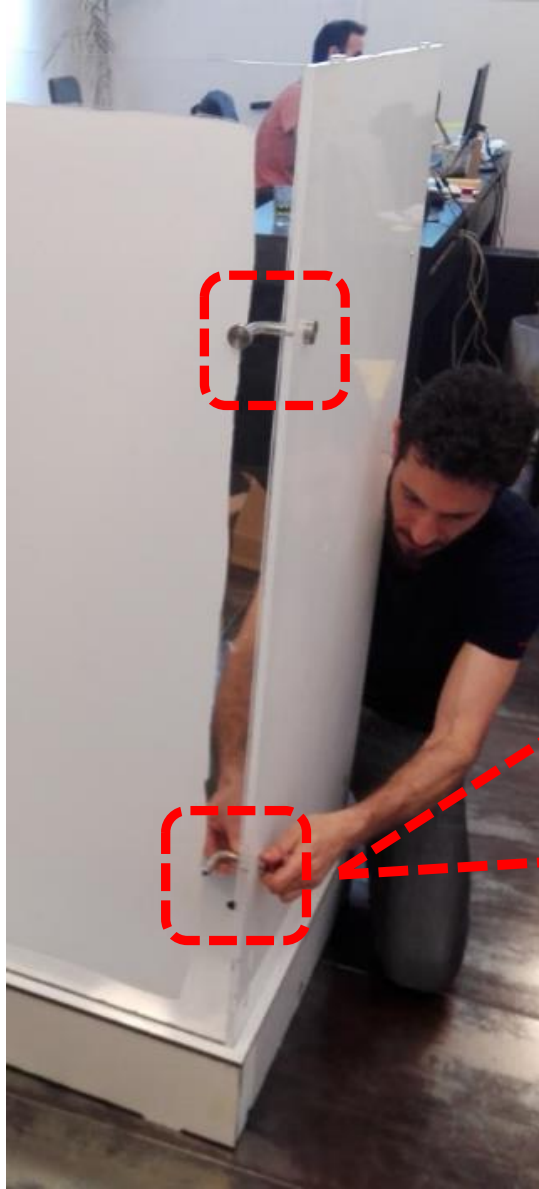


Connect **short** neck
to **wide** wall (6mm)

Connect **long** neck
to **narrow** wall (10mm)

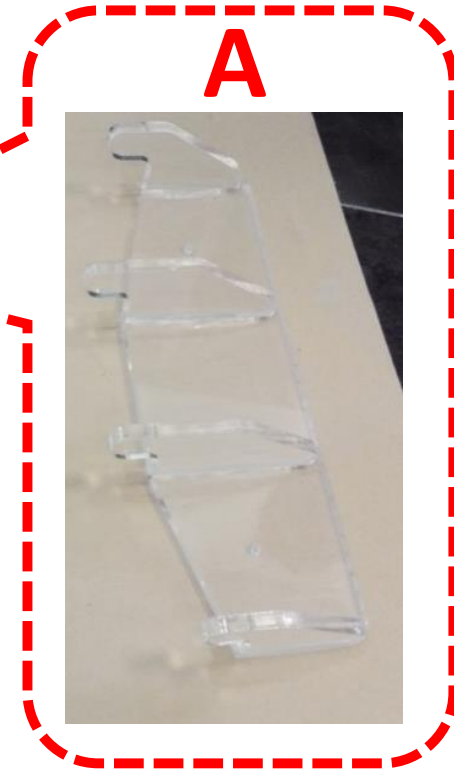
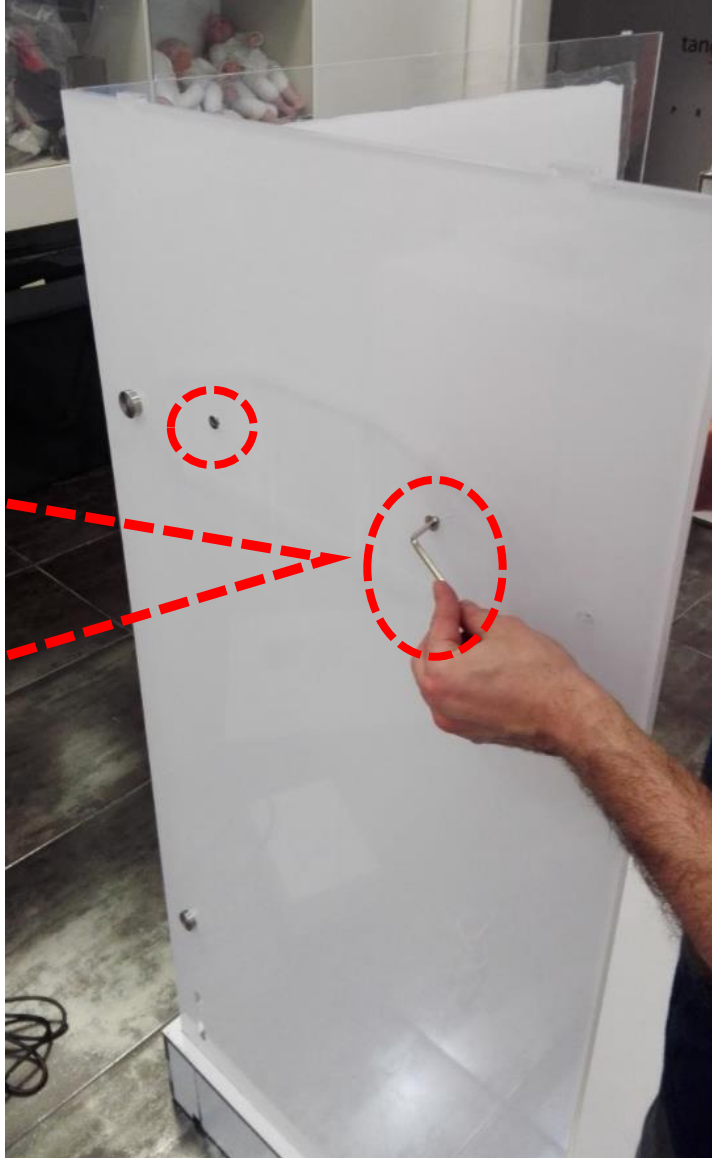
Assembly- 3.3

- Make sure both upper and lower connection are connected



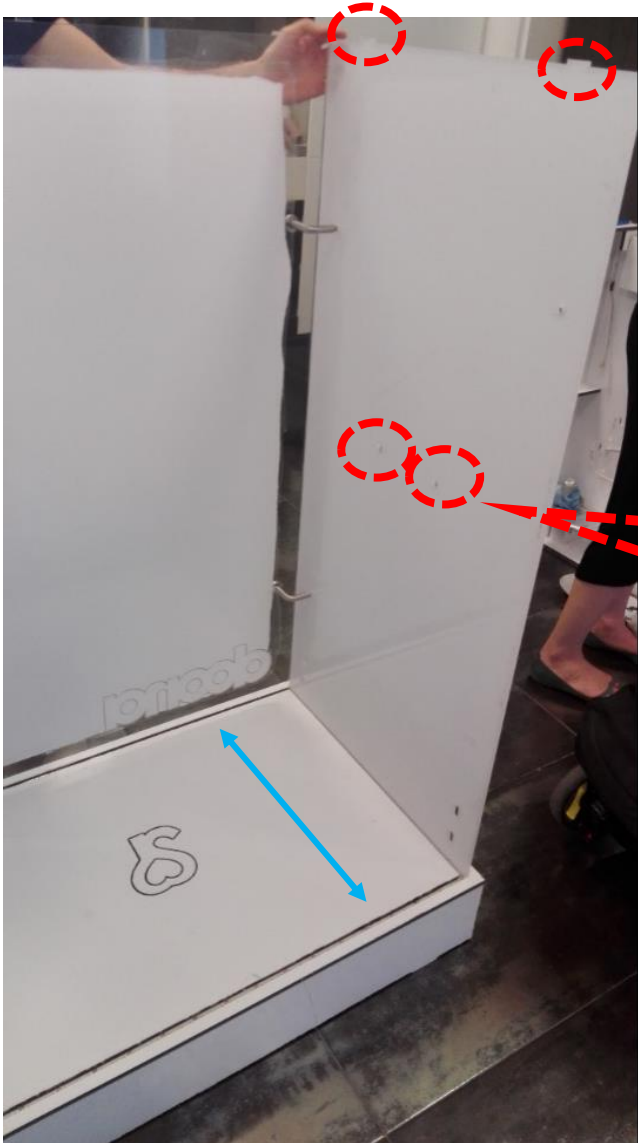
Assembly- 4

- Connect plastic part **A** to narrow wall- **upper** holes

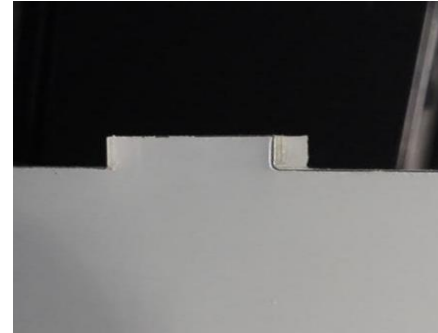


Assembly- 5.1

- Place the narrow wall- **lower** holes on the **shorter** side of the podium

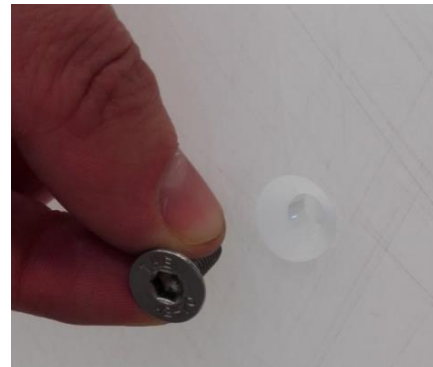


1.



Pointing
upward

2.



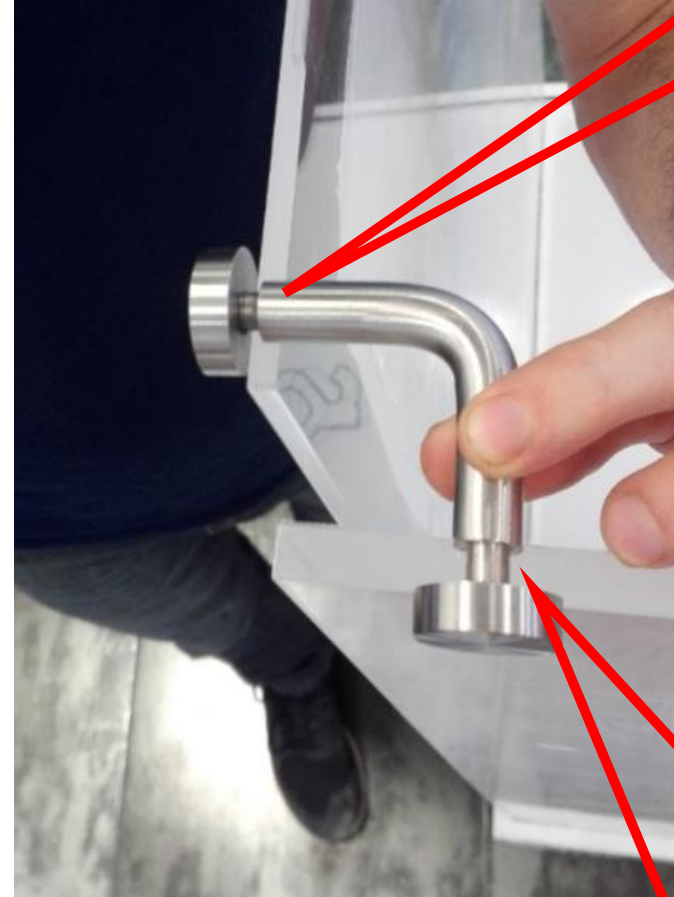
Make sure the
cone shape hole is
facing **outward**

Assembly- 5.2

- Connect the narrow wall- **lower** holes to the wide wall



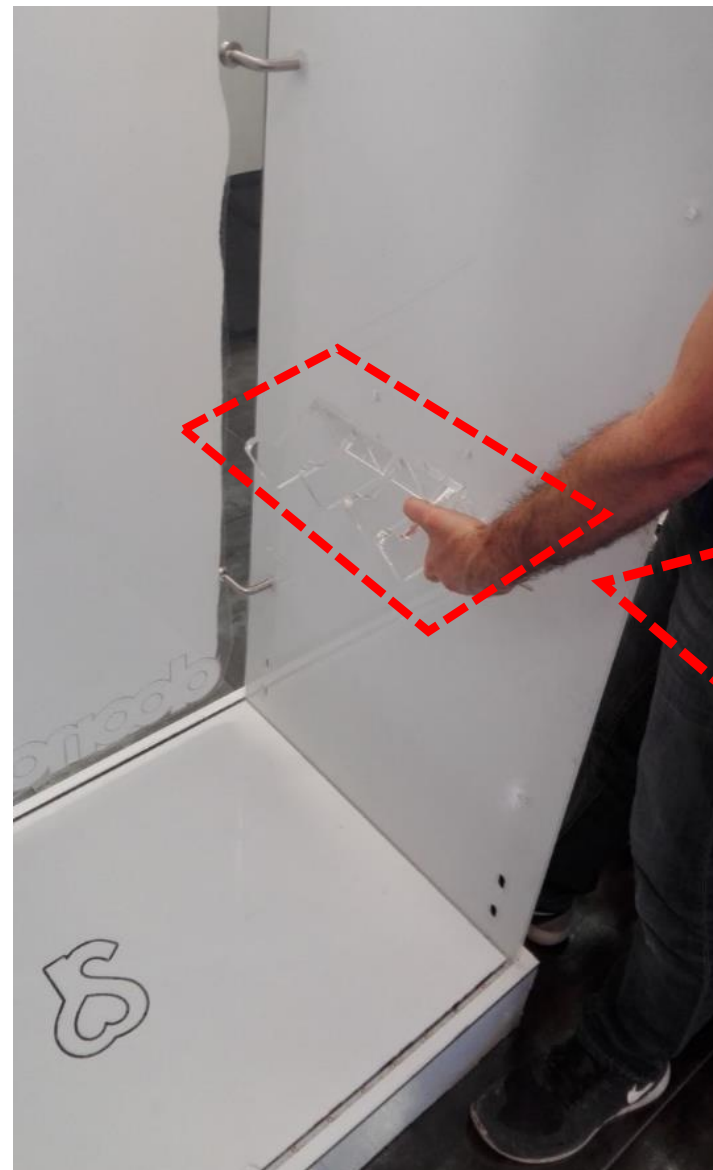
Connect **short** neck
to **wide** wall (6mm)



Connect **long** neck
to **narrow** wall (10mm)

Assembly- 6

- Connect plastic part **B** to narrow wall- **lower** holes



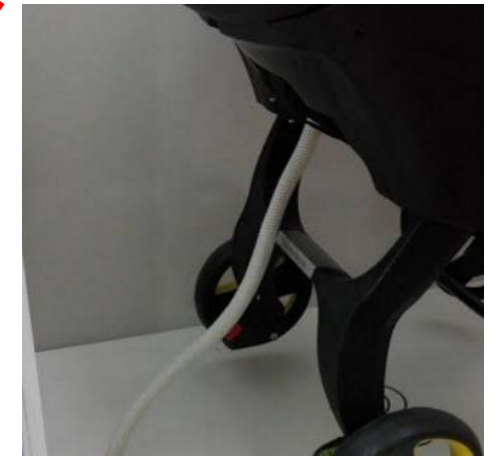
Assembly 7.1- Placing Doona motion



Assembly 7.2- Placing Doona motion



Insert the cable
inside podium
through hole



Make sure the cable
is placed **over** the
plastic leg

Assembly 8- Metal connectors

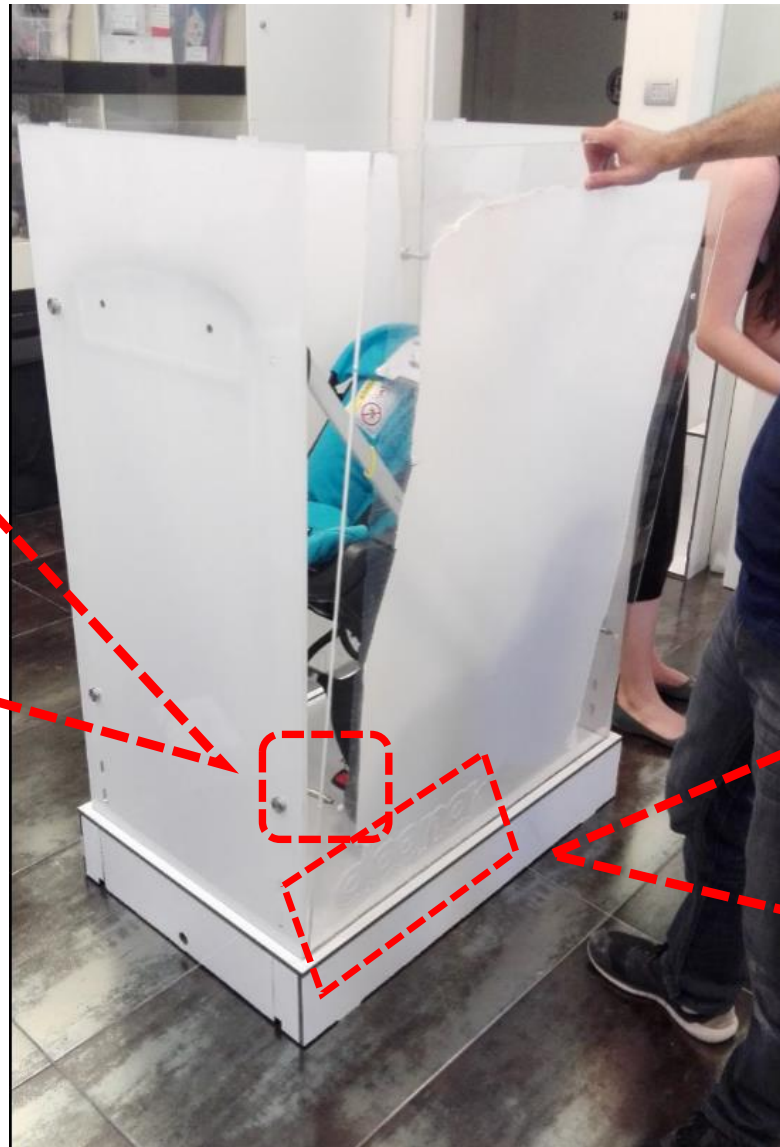


1. Connect 4 metal connectors to narrow walls
2. Leave unconnected edge **not screwed**

Assembly 9- Place last wall

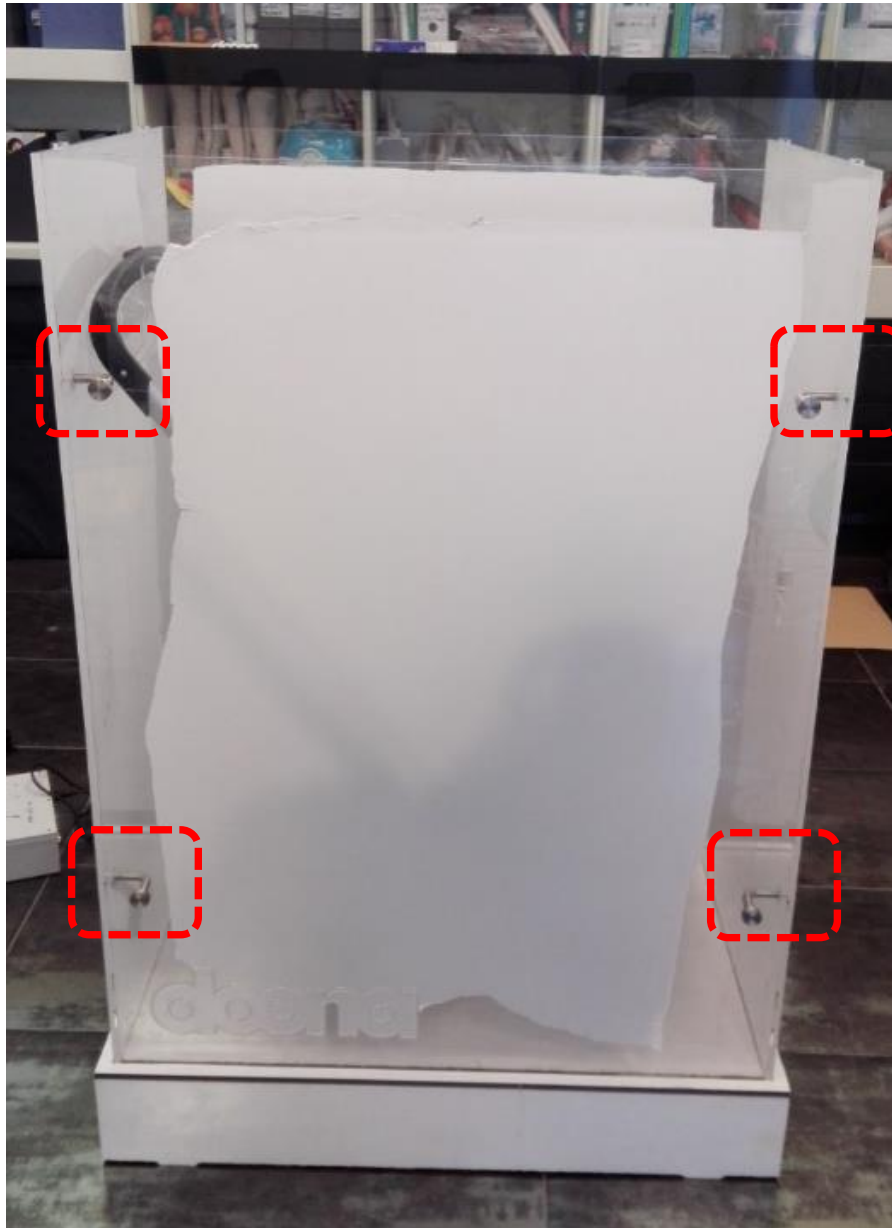


Make sure the location of holes in the wall matches the unscrewed metal connectors



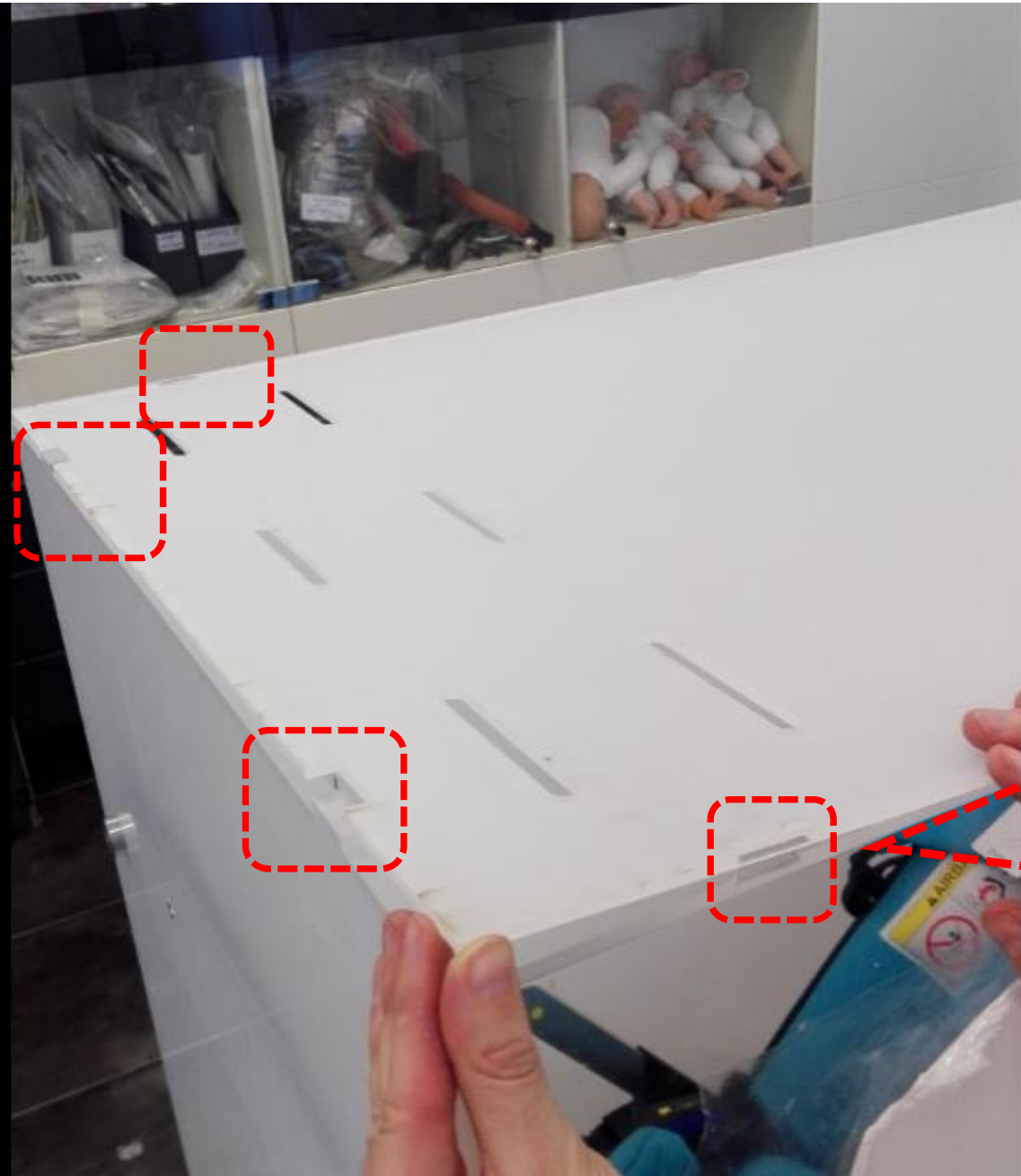
Make sure that "doona" sign at the bottom of the wall is facing upright outward

Assembly 10- Connect last wall



Close 4 unscrewed metal connectors and connect the last wall to narrow walls

Assembly 11- Place cover



Assembly 12.1- Connect electronics



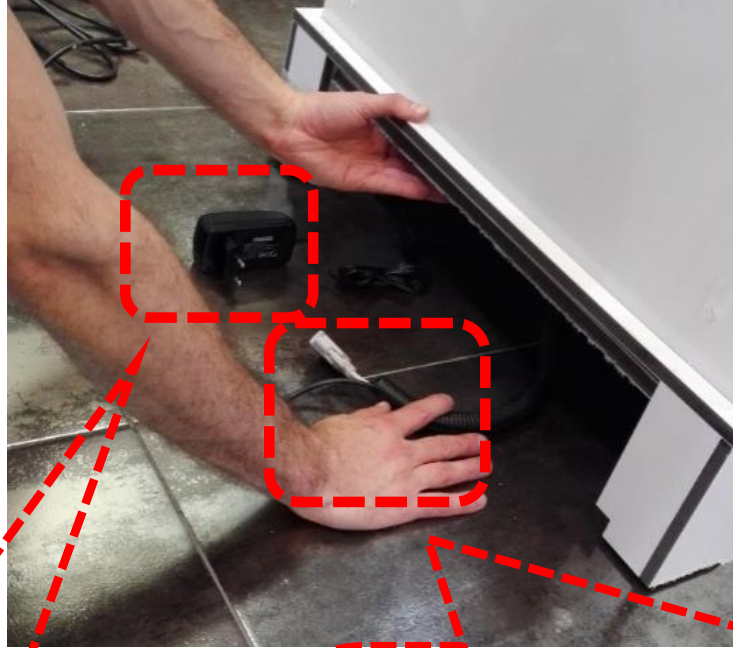
1. Open podium's Side door



2. Take out black transmitter and cable

Assembly 12.2- Connect control box

1. Connect black transmitter to control box



2. Connect Doona cable to control box
(2 connections)



Assembly 12.3- Connect electronics

Plug into the power outlet.

Use an adapter if necessary.
Make sure the adapter includes
grounding



Assembly 13-

Turn on/Off Doona motion



On/Off

Start

Stop

Assembly 14- Close podium

1. Insert power box and cables inside podium



2. Close podium door
3. Make sure power cable is inserted in door slot



Enjoy your Doona motion display

